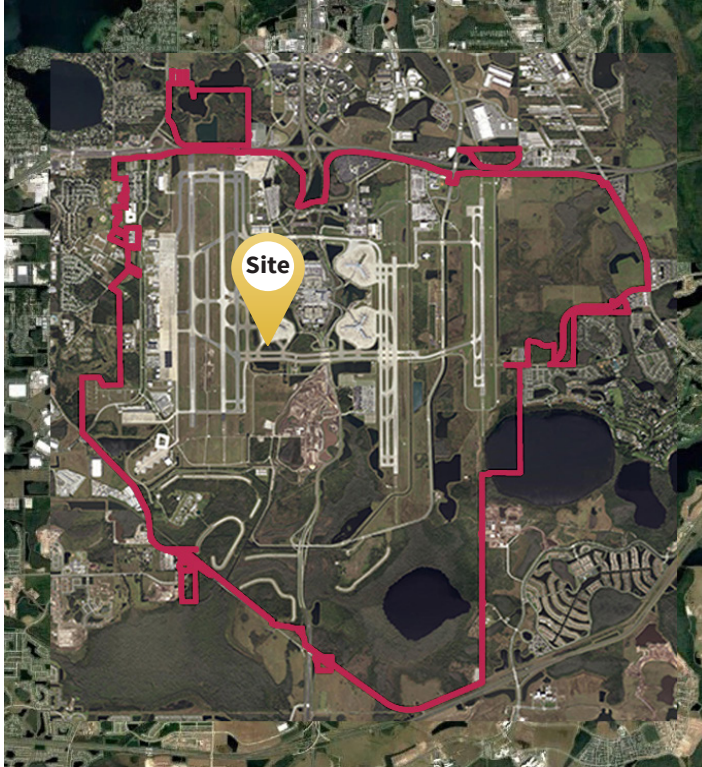


# Parcel Data Sheet

Parcel STS08



## GOAA Contact Information

**Telephone:** +1(407) 423-9018  
**Email:** [propertyinformation@goaa.org](mailto:propertyinformation@goaa.org)  
**Website:** [orlandoairports.net/destinationmco](http://orlandoairports.net/destinationmco)

## Utility Providers

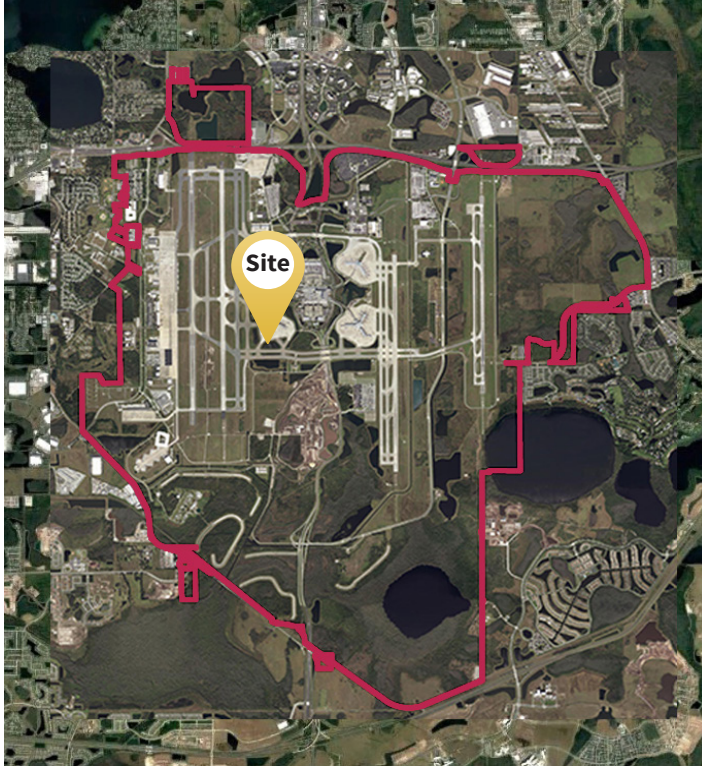
**Electric:** OUC  
+1(407) 423-9018  
**Natural Gas:** TECO  
+1(407) 425-4662  
**Water:** OUC  
+1(407) 894-9831  
**Sewer:** City of Orlando  
+1(407) 246-2266

## Site Attributes

<b>Acreage:</b>	5	<b>Electric:</b>	Yes
<b>Hectares:</b>	2	<b>Natural Gas:</b>	No
<b>Latitude:</b>	28.39449305	<b>Water:</b>	No
<b>Longitude:</b>	-81.32782523	<b>Sewer:</b>	No
<b>City:</b>	Orlando	<b>Telecommunications:</b>	No
<b>County:</b>	Orange	<b>Airfield Access:</b>	No
<b>GOAA Land Use:</b>	Non-Aviation Commercial	<b>Soil Type:</b>	Zolfo Fine Sand
<b>GOAA Development Zone:</b>	South Terminal Support		
<b>City of Orlando Zoning:</b>	Metropolitan Activity Center		
<b>City of Orlando Land Use:</b>	Metropolitan Activity Center		
<b>Adjacent Road:</b>	Boggy Creek Road		
<b>Proximity to Highway:</b>	SR 417 (2 Miles), SR 528 (5 Miles), I-4 (15 Miles), I-95 (34 Miles), I-75 (63 Miles)		
<b>Fire Department on Site:</b>	ARFF West		
<b>Police Department on Site:</b>	Orlando Police Department		

# Parcel Data Sheet

Parcel STS08



## GOAA Contact Information

**Telephone:** +1(407) 423-9018  
**Email:** [propertyinformation@goaa.org](mailto:propertyinformation@goaa.org)  
**Website:** [orlandoairports.net/destinationmco](http://orlandoairports.net/destinationmco)

## Utility Providers

**Electric:** OUC  
+1(407) 423-9018  
**Natural Gas:** TECO  
+1(407) 425-4662  
**Water:** OUC  
+1(407) 894-9831  
**Sewer:** City of Orlando  
+1(407) 246-2266

## Site Attributes

<b>Acreage:</b>	5	<b>Electric:</b>	Yes
<b>Hectares:</b>	2	<b>Natural Gas:</b>	No
<b>Latitude:</b>	28.39449305	<b>Water:</b>	No
<b>Longitude:</b>	-81.32782523	<b>Sewer:</b>	No
<b>City:</b>	Orlando	<b>Telecommunications:</b>	No
<b>County:</b>	Orange	<b>Airfield Access:</b>	No
<b>GOAA Land Use:</b>	Non-Aviation Commercial	<b>Soil Type:</b>	Zolfo Fine Sand
<b>GOAA Development Zone:</b>	South Terminal Support		
<b>City of Orlando Zoning:</b>	Metropolitan Activity Center		
<b>City of Orlando Land Use:</b>	Metropolitan Activity Center		
<b>Adjacent Road:</b>	Boggy Creek Road		
<b>Proximity to Highway:</b>	SR 417 (2 Miles), SR 528 (5 Miles), I-4 (15 Miles), I-95 (34 Miles), I-75 (63 Miles)		
<b>Fire Department on Site:</b>	ARFF West		
<b>Police Department on Site:</b>	Orlando Police Department		