

**ADDENDUM NO. 10
TO THE AGREEMENT DATED MAY 14, 2021
BETWEEN GREATER ORLANDO AVIATION AUTHORITY
AND VANASSE HANGEN BRUSTLIN, INC.**

Project: FY24 Water Quality and Flow Monitoring, Orlando Executive Airport

THIS ADDENDUM is effective this 13th day of December, 2023, by and between the **GREATER ORLANDO AVIATION AUTHORITY** ("Authority"), and **VANASSE HANGEN BRUSTLIN, INC.** ("Consultant").

WITNESSETH:

WHEREAS, by Agreement dated May 14, 2021, Authority and Consultant entered into an agreement for Consultant to provide Continuing Environmental Consulting Services; and

WHEREAS, under the Agreement, Consultant agreed to perform such additional services for the Authority as are contained in any additional scope of work established by the Authority in any addendum to the Agreement and accepted in writing by the Consultant; and

WHEREAS, the Authority and the Consultant desire to enter into this Addendum to the Agreement to provide for additional services to be rendered by the Consultant under the terms of said Agreement.

NOW, THEREFORE, in consideration of the premises and the mutual covenants herein contained, the Authority and the Consultant do hereby agree as follows:

1. Consultant shall perform additional services in accordance with the terms of the Agreement and the attached Exhibit "A." Consultant shall be paid for such additional services according to the payment terms set forth in the Agreement.
2. Consultant shall be compensated for such additional services in the **NOT TO EXCEED amount of ONE HUNDRED THIRTEEN THOUSAND SEVEN HUNDRED FOUR AND 40/100 DOLLARS (\$113,704.40)**, broken down as follows:

Professional Fees:	NTE:	\$56,449.00
Professional Fees:	LS:	\$0.00
Reimbursable Expenses:	NTE:	<u>\$57,255.40</u>
Total:		\$113,704.40

3. A. Consultant hereby certifies that it is not on the Scrutinized Companies that Boycott Israel List and is not engaged in a boycott of Israel, as defined in Florida Statutes § 287.135, as amended;

AND

B. (applicable to agreements that may be \$1,000,000 or more) - Consultant hereby certifies that it is: (1) not on the Scrutinized Companies with Activities in Sudan List or the Scrutinized Companies with Activities in the Iran Petroleum Energy Sector List as defined in Florida Statutes § 287.135; and (2) not engaged in business operations in Cuba or Syria, as defined in Florida Statutes § 287.135, as amended.

4. Authority may terminate the Agreement for cause and without the opportunity to cure if the Consultant is found to have submitted a false certification or has been placed on the Scrutinized Companies that Boycott Israel List or is engaged in a boycott of Israel.

In the event the Agreement is for One Million Dollars (\$1,000,000.00) or more, Authority may terminate this Agreement for cause and without the opportunity to cure if the Consultant is found to have submitted a false certification or has been placed on the Scrutinized Companies with Activities in Sudan List or the Scrutinized Companies with Activities in the Iran Petroleum Energy Sector List or is engaged in business operations in Cuba or Syria.

5. Except as expressly modified in this Addendum, the Agreement dated May 14, 2021 and all prior addenda will remain in full force and effect.

IN WITNESS WHEREOF, the parties hereto by their duly authorized representatives, have executed this Addendum this day of Dec 18, 2023.

GREATER ORLANDO AVIATION AUTHORITY

Kevin J. Thibault

By:

box SIGN 1V3Q39J4-4PPW72V3

Kevin J. Thibault, P.E.
Chief Executive Officer

**Approved as to Form and Legality
(for the benefit of GOAA only)
this day of Dec 18, 2023**

Karen Ryan

By: box SIGN

1JBRUK51-4PPW72V3

**NELSON MULLINS BROAD AND
CASSEL, Legal Counsel
Greater Orlando Aviation Authority**

VANASSE HANGEN BRUSTLIN, INC.

Fabricio Ponce

By:

box SIGN 15XP3V72-4PPW72V3

Signature (Duly Authorized Rep.)

Fabricio Ponce

Printed Name

Managing Director - Atlanta

Title



GREATER ORLANDO AVIATION AUTHORITY

Orlando International Airport
One Jeff Fuqua Boulevard
Orlando, Florida 32827-4392

MEMORANDUM

TO: Members of the Procurement Committee

FROM: Brad Friel, Senior Vice President, Multi-Modal Planning and Environmental
(Prepared by Dan Carrington)

DATE: November 21, 2023

ITEM DESCRIPTION

Request for Recommendation to Aviation Authority Board of Approval an Addendum to the Continuing Environmental Consulting Services Agreement with Vanasse Hangen Brustlin Inc. to provide Water Quality and flow Monitoring for FY24 at Orlando Executive Airport

BACKGROUND

In 2021, the firms providing Continuing Environmental Consulting Services were selected through a competitive award process. These services are procured on an as-needed or annual basis.

On April 21, 2021, the Aviation Authority Board approved a Continuing Environmental Consulting Services Agreement with each of the following firms:

- Breedlove, Dennis and Associates, Inc.
- Bio-Tech Consulting, Inc.
- DRMP, Inc.
- The Transit Group, Inc. d/b/a Ecological Associates, Inc.
- EXP U.S. Service, Inc.
- MSE Group, LLC
- Terracon Consultants, Inc.
- Vanasse Hangen Brustlin, Inc.

These no-cost base agreements established the negotiated hourly rates. The continuing environmental consulting services may include, but are not limited to, evaluation and assessment of wildlife issues, uplands and wetlands evaluation, habitat analysis, threatened and endangered species issues, jurisdictional wetland determinations, water quality analysis, land management, and monitoring of wetlands mitigation on facilities operated or purchased by the Aviation Authority and all other related services including coordination with the Aviation Authority, its Consultants, the City of Orlando and all agencies having jurisdiction over the facilities. The Services may also include preparation of required notices and reports, coordination and providing assistance with requirements of authorities having jurisdiction over various mitigation sites, documentation of existing environmental conditions, preparation of environmental studies, technical support, and assistance with permitting activities which may be required where the Aviation Authority elects not to solicit letters of interest by means of public advertisement.

EXHIBIT A

ISSUES

Consultant's proposal dated September 22, 2023, is to provide the scope of work associated with Water Quality Monitoring associated with the Numeric Nutrient Criteria Rule for Florida's Lakes and Flowing Waters. Samples will be taken at different locations throughout the Orlando Executive Airport for Quarterly and Bi-annual parameters.

The cumulative contract value of all addenda/amendments since the last approval by the Aviation Authority Board for to the Continuing Environmental Consulting Services Agreement with Vanasse Hangen Brustlin Inc. exceeds the \$250,000 threshold; thus, this agenda item requires Board approval.

If approved, these services would be effective the date of Aviation Authority Board approval.

SMALL BUSINESS

The MWBE/LDB/VBE participation has been reviewed by the Office of Small Business Development (OSBD). The findings and recommendation are attached.

ALTERNATIVES

None.

FISCAL IMPACT

The fiscal impact is \$113,704.40 Funding is from previously approved OEA Revenue Funds.

RECOMMENDED ACTION

It is respectfully requested that the Procurement Committee recommend to the Aviation Authority Board approval of an Addendum to the Continuing Environmental Consulting Services Agreement with Vanasse Hangen Brustlin Inc., for the services contained herein and the amount as shown below:

Not-to-Exceed Fees	\$56,449.00
Lump Sum Fees	\$00
Not-to-Exceed Expenses	\$57,255.40
TOTAL	\$113,704.40
AAC – Compliance Review Date	<u>S.J</u> 11/14/23
AAC – Funding Eligibility Review Date	11/14/23

ATTACHMENTS

Attachment A: Finance Form

Attachment B: OSBD Memo



September 22, 2023

Mr. Dan Carrington
Greater Orlando Aviation Authority
Orlando International Airport
5850-B Cargo Road
Orlando, Florida 32827-4399

RE: Water Quality and Flow Monitoring at the Orlando Executive Airport

Dear Mr. Carrington:

VHB has prepared a scope and fee to continue the Water Quality and Flow Monitoring Project at the Orlando Executive Airport. This project was initiated in 2013 to develop the water quality and flow data necessary to calculate nutrient loads entering Lake Barton from the airport.

As outlined in Exhibit A, the scope of work includes the water quality monitoring, discharge measurements, continuous stage/discharge monitoring and data downloads, and annual report preparation. This scope and fee are to continue the monitoring during FY 2024.

The total estimated fee for this scope of work is \$113,704.40 as outlined in Exhibit B.

Thank you for this opportunity and please don't hesitate to contact me if you have any questions.

Most respectfully provided,

Gary M. Serviss
Southeast Region Environmental Services Leader

Engineers | Scientists | Planners | Designers

225 E. Robinson Street, Suite 300
Landmark Center Two
Orlando, Florida 32801
P 407.839.4006
F 407.839.4008

EXHIBIT A

Scope of Work for Water Quality and Flow Monitoring At the Orlando Executive Airport Prepared by VHB for The Greater Orlando Aviation Authority

The State of Florida's Environmental Regulatory Commission adopted Numeric Nutrient Criteria (NNC) proposed by the Department of Environmental Regulation (DEP). The DEP NNC are now in effect and are more stringent for Total Nitrogen (TN) and Total Phosphorus (TP) concentration limits in flowing systems (streams) and for TN, TP and Chlorophyll *a* for lakes.

VHB previously evaluated the Greater Orlando Aviation Authority's (GOAA's) potential risks associated with the proposed numeric nutrient criteria for the Orlando International Airport (MCO) and Orlando Executive Airport (ORL). The evaluation report noted that Lake Barton has been deemed "impaired" for nutrients. Typically, landowners within the watershed of impaired waters will be required to reduce their discharge (loading) of nutrients to limit the total nutrient loading to a level at which the waterbody is no longer impaired. Once deemed impaired, a Total Maximum Daily Load (TMDL) will be established by DEP for the basin/downstream waterbody and load allocations will be assigned through the Basin Management Action Plan (BMAP) process. GOAA's ORL property will be pulled into the BMAP process and some nutrient limits will be set for discharges from the property.

As such, GOAA contracted with VHB to implement a water quality and flow monitoring program at the Orlando Executive Airport in December 2013. The program is important since it will document the volume and quality of water entering and leaving the ORL property so that their pollutant load can be quantified. The continuation of the monitoring program described below will serve to develop the data needed to calculate the nutrient loads generated on the ORL properties.

The monitoring program includes water quality monitoring and data download, calibration and maintenance of the previously installed stage and discharge monitoring equipment to document the quality and volume of water entering and leaving the ORL property. Defining the stage/discharge relationship for each monitoring site requires measuring discharge over a range of flow conditions. The rating curves for each site will continue to be refined and modified as necessary this year.

1.1 Water Quality Sampling Program

Water quality sampling will occur on a quarterly basis at the six sites shown on Figure 1. Samples will not be collected unless the water is flowing at that site as the quality may not be indicative of the water discharged. The offsite discharge from the north and west, sampled at Sites 1A and 2A, only occurs

Scope of Work for Water Quality and Flow Monitoring

immediately after a rainfall event. To the greatest extent practical, sampling will occur as soon as possible after a rainfall event to maximize the chance to successfully collect a sample under flowing conditions. Provided below is the list of parameters and the proposed frequency of sampling for each parameter.

Quarterly Parameters: Ammonia, Nitrate/Nitrite, Total Kjeldahl Nitrogen, Total Nitrogen, Orthophosphate, Total Phosphorus, Turbidity, Total Suspended Solids, Biological Oxygen Demand, and Total Alkalinity. In addition, the following *in situ* parameters will be measured with a sonde: temperature, pH, conductivity, and dissolved oxygen.

The water quality monitoring previously included the collection of additional parameters on a bi-annual basis. This sampling was reduced to one time a year (annual) as a cost saving effort beginning in FY 2020. Annual Monitoring will be conducted during the summer.

Annual Parameters: Calcium, Magnesium, Hardness, Cadmium, Copper, Iron, Lead, Mercury, Zinc, FL Pro, Herbicides (Method 8151).

Work included in this subtask will be completed by the end of September 2024. Specific aspects of this task include:

- Four quarterly field sampling to collect water quality samples.
- Delivery of water quality samples to an analytical laboratory for analysis.
- Chemical analysis of water quality samples for the four sampling events.

Deliverables: Four field sampling events and associated water quality sample analyses.

1.2 Equipment Maintenance, Data Download, and Discharge Measurements

The data collected by the three stage recorders and three velocity meters will be downloaded each month. These monthly site visits will also serve to recalibrate the stage recorders and to clean and maintain the equipment as needed. Approximately twice per year the ADCP units will be cleaned by a SCUBA diver.

A series of discharge measurements will be collected through the year to develop and refine the stage/discharge relationship. Three measurements are planned from the notice to proceed through September 2024 and will be scheduled under various flow conditions.

The standard United States Geological Survey (USGS) mid-section method will be used to determine total streamflow where applicable. Flow will be measured using current meters approved by the USGS. The Price AA Current Meter, Pygmy Meter or ADCP will be used to obtain cross-sectional mean flow for ratings. Discharge measurements will be conducted such that sub-sections contain no more than 5% of

Scope of Work for Water Quality and Flow Monitoring

the total flow of the stream and will include a point-of-zero-flow (PZF) determination. Approximately 20-25 sub-sections will be taken for each measurement. The 0.6 method will be used in depths less than 2.5 ft and the 0.2 and 0.8 method will be used in depths greater than 2.5 ft. In the event an inverted velocity profile is encountered, the 0.2, 0.6, and 0.8 methods will be used to determine flow within that sub-section. Measurements will be made by wading, bridge crane, or boat. During site visits high water marks will be observed and evaluated to verify that the maximum-recorded stage is appropriate.

Standard discharge measurement notes (patterned after U.S. Department of the Interior Form 9-275-F) will be completed for each measurement, including a field spin test, start and end times, gauge readings, and remarks. All measurements will include notes as to the quality of the measurement, control conditions in the stream that may affect the gauge height/discharge relation, the staff gauge reading, and a PZF (if applicable). Portable flumes or volumetric methods may be used in cases of extreme low flow. The techniques and policies described in the USGS TWRI *Discharge Measurements at Gaging Stations* by T. J. Buchanan and W.P. Somers and USGS Water Supply Paper 2175 *Measurement and Computation of Streamflow: Volume 1. Measurement of Stage and Discharge* by S.E. Rantz and others will be rigidly adhered to.

Discrepancies between the staff gauge and the recorder at each station will be noted and will indicate the immediate need for corrective action. The distance from a reference point (RP) to the water surface will be measured for each measurement and a record of this information placed on the measurement notes. A RP has been marked at each existing station to allow for this field comparison.

Discharge measurements plotting left or right of the base curve or a defined shift curve by more than 5% will be verified by a check measurement. The check measurement will be made at a different cross section, if possible, using a different meter and stopwatch. Documentation will be provided as to why the measurement does not agree with the current rating or shift curve.

Work included in this subtask can be completed by September 30, 2024. Specific aspects of this task include:

- 12 field inspections to calibrate and maintain the equipment and to download the stage and velocity data.
- Approximately three discharge measurements obtained under various flow conditions.
- Preparation of standard discharge measurement notes.

Deliverables: Data downloads, discharge field measurements and field notes.

1.3 Annual Report

The results of the FY 2023 quarterly water quality sampling and continuous stage/velocity monitoring shall be summarized in an annual report. The report will contain an introduction, methodology, results

Scope of Work for Water Quality and Flow Monitoring

and summary and conclusion sections. The results will be provided in tabular and graphic format with the data provided as hard copy or electronic appendices.

Discharge ratings will be developed as needed and defined by the discharge measurements and PZF's as described in USGS TWRI *Computation of Continuous Records of Streamflow* by E.J. Kennedy. All ratings will be developed on log-log paper with an appropriate scale offset, generally the gauge height of zero flow.

Discharge will be computed using the ratings developed above and the stage and velocity record recorded at the six sites. Datum corrections will be applied to the record as required base on field observations. Discharge will be computed for the unit value increment of the recorder (generally 15 or 60-minute). Discharge computations will be summarized in primary computations and the primary computations will be summarized as mean daily stage and discharge.

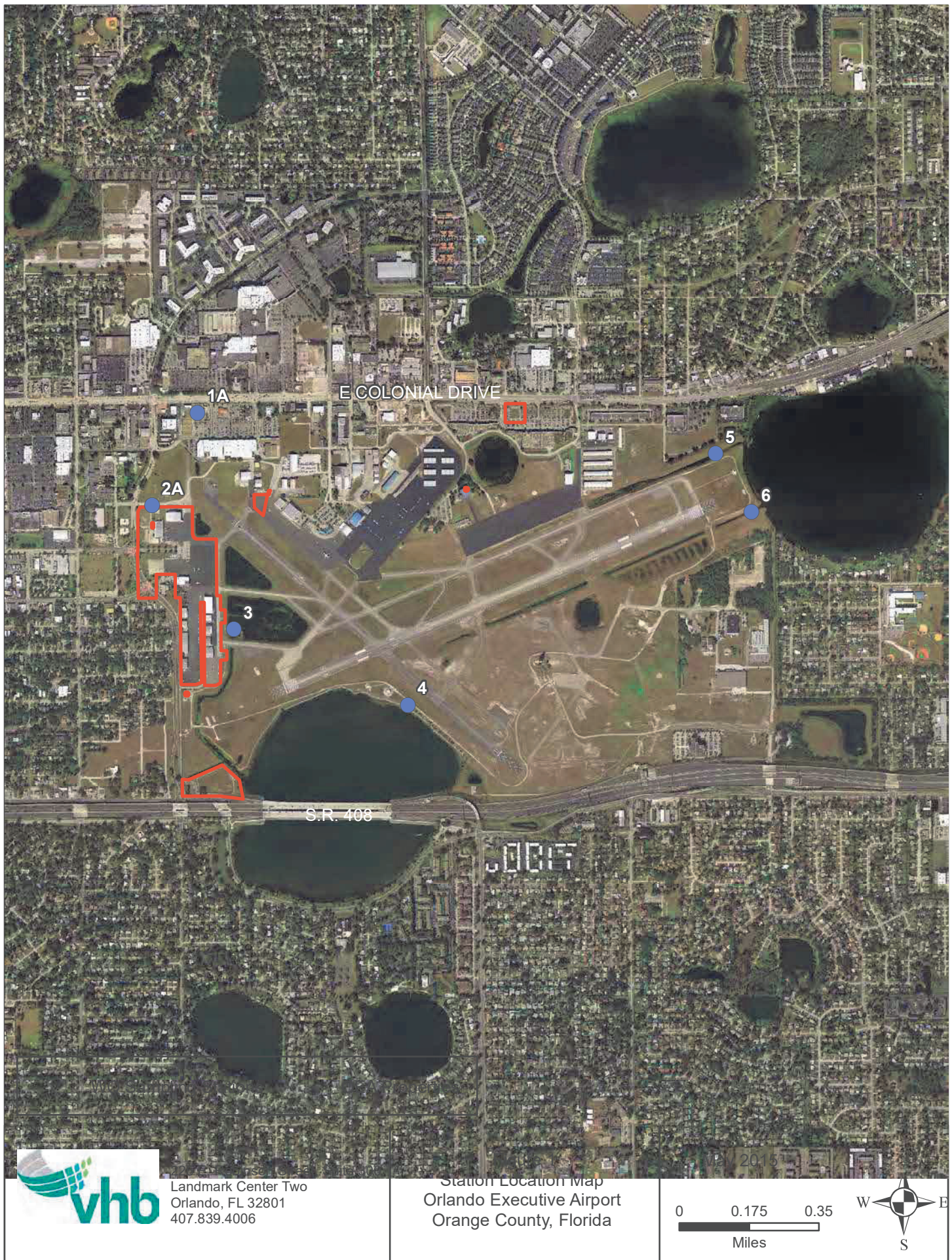
Water quality results shall be analyzed to calculate the maximum, minimum and geometric mean. The results shall be compared to State water quality standards (Chapter 62-302, Florida Administrative Code).

A draft report shall be initiated during the first half of the year. The final report shall be prepared and submitted within 30 days of receipt of comments from GOAA. Specific aspects of this task include:

- Rating curves developed on log-log paper with discharge measurements plotted (hard copy).
- Computation of discharge for each unit value (15, 60-minute) of recorded stage/velocity.
- Primary computations of discharge indicating hourly stage values.
- Primary computations of discharge indicating maximum, minimum and mean stage, and mean discharge for each day.
- Tabulated mean daily stage, discharge, indicating total, maximum, minimum, mean, and runoff in inches for each month
- Data file of all discharge measurements.
- Water quality data calculations and analysis
- Preparation of a draft and final report.

Deliverables: Stage/discharge data analysis, water quality analysis, draft and final annual report.

The total estimated fee for this task is \$113,704.40.



Vanasse Hangen Brustlin, Inc.

EXHIBIT B

ORLANDO INTERNATIONAL AIRPORT

ORL Water Quality Monitoring

Staffing Cost Estimate

	Role	Firm	Total Hours	Hourly Rate	Total Fee
	Principal In Charge	VHB	8	\$422.00	0 \$3,376.00
	Sr. Project Manager	VHB	66	\$241.00	0 \$15,906.00
	Sr. Scientist II	VHB	8	\$188.00	0 \$1,504.00
	Environmental Specialist IV	VHB	253	\$123.00	0 \$31,119.00
	Environmental Specialist I	VHB	16	\$80.00	0 \$1,280.00
	Project Administrator	VHB	28	\$93.00	0 \$2,604.00
	GIS Manager	VHB	4	\$165.00	0 \$660.00
			0		\$0.00
			0		\$0.00
			383		\$56,449.00

SPECIALTY CONSULTANTS

Hydrologic Data Collection, Inc	\$24,000.00
Benchmark Enviroanalytical Laboratory, Inc.	\$7,550.40

SUBTOTAL	\$87,999.40
-----------------	--------------------

REIMBURSABLE EXPENSES:	\$25,705.00
-------------------------------	--------------------

TOTAL:	\$113,704.40
---------------	---------------------

Vanasse Hangen Brustlin, Inc.

EXHIBIT B

GREATER ORLANDO AVIATION AUTHORITY ORL Water Quality Monitoring

Staffing Hour Estimate

WORK TASK

2023	2024		
QUARTER 1	QUARTER 2	QUARTER 3	QUARTER 4
T1, T2, T3	T1, T2, T3	T1, T2, T3	T1, T2, T3

ROLE	FIRM	INDIVIDUAL*	2023	2024		
			QUARTER 1	QUARTER 2	QUARTER 3	QUARTER 4
Principal in Charge	VHB	M. Lamb	2	2	2	2
Sr. Project Manager	VHB	G. Serviss	8	20	20	18
Sr. Scientist II	VHB	C. Smith	1	3	2	2
Environmental Specialist IV	VHB	M. Wielenga	40	75	72	66
Environmental Specialist I	VHB	M. Panny	4	4	4	4
Project Administrator	VHB	D. Miles	3	10	10	5
GIS Manager	VHB	S. Osiecki	0	2	2	0
TOTAL STAFF HOURS			58	116	112	97

*It is anticipated the above named personnel will be utilized in the accomplishment of this assignment. However, as the assignment is actually being accomplished, it may become necessary to supplement or change personnel in the best interest of completing the project.

EXHIBIT B
Greater Orlando Aviation Authority
ORL Water Quality Monitoring
Breakdown of Fixed Fees

Position:	Principal in Charge		Sr. Project Manager		Sr. Scientist II		Environmental Specialist IV		GIS Manager		Environmental Specialist I		Project Administrator		Total		
Rate (\$/Hour):	\$422.00		\$241.00		\$188.00		\$123.00		\$165.00		\$80.00		\$93.00		Manhours	Cost	Avg. Hourly Rate
	Manhours	Cost	Manhours	Cost	Manhours	Cost	Manhours	Cost	Manhours	Cost	Manhours	Cost	Manhours	Cost			
Tasks																	
1. Water Quality Sampling Program	4	\$1,688.00	8	\$1,928.00	4	\$752.00	56	\$6,888.00	0	\$0.00	8	\$640.00	4	\$372.00	84	\$12,268.00	\$146
2. Equipment Maintenance, Data Download, and Discharge Measurements	2	\$844.00	30	\$7,230.00	2	\$376.00	127	\$15,621.00	0	\$0.00	8	\$640.00	6	\$558.00	175	\$25,269.00	\$144
3. Annual Report	2	\$844.00	28	\$6,748.00	2	\$376.00	70	\$8,610.00	4	\$660.00	0	\$0.00	18	\$1,674.00	124	\$18,912.00	\$153
	0	\$0.00	0	\$0.00	0	\$0.00	0	\$0.00	0	\$0.00	0	\$0.00	0	\$0.00	0	\$0.00	#DIV/0!
	0	\$0.00	0	\$0.00	0	\$0.00	0	\$0.00	0	\$0.00	0	\$0.00	0	\$0.00	0	\$0.00	#DIV/0!
	0	\$0.00	0	\$0.00	0	\$0.00	0	\$0.00	0	\$0.00	0	\$0.00	0	\$0.00	0	\$0.00	#DIV/0!
Sub-Total	8	\$3,376.00	66	\$15,906.00	8	\$1,504.00	253	\$31,119.00	4	\$660.00	16	\$1,280.00	28	\$2,604.00	383	\$56,449.00	
Not-To-Exceed Expenses (company name)																\$25,705.00	
Not-To-Exceed Expenses (subconsultant)																\$31,550.40	
TOTAL NOT-TO-EXCEED FEE	8	\$3,376.00	66	\$15,906.00	8	\$1,504.00	253	\$31,119.00	4	\$660.00	16	\$1,280.00	28	\$2,604.00	383.0	\$113,704.40	

[illegible]

Vanasse Hangen Brustlin, Inc.

EXHIBIT B

GREATER ORLANDO AVIATION AUTHORITY

ORL Water Quality Monitoring

Subconsultants

	Task 1	Task 2	Task 3	Total
Hydrologic Data Collection, Inc		\$3,000.00	\$21,000.00	\$24,000.00
Benchmark Enviroanalytical Laboratory, Inc.	\$7,550.40			\$7,550.40
TOTAL FEE	\$7,550.40	\$3,000.00	\$21,000.00	\$31,550.40

2024 Rental Equipment Summary

<u>Task</u>	<u>Item</u>	<u>Unit Cost</u>	<u>Number of Units</u>	<u>Number of Events</u>	<u>Total Cost</u>
Water Quality Monitoring	Field Vehicle	\$50/day	1	4	\$ 200.00
	Peristaltic Pump	\$50/day	1	4	\$ 200.00
	Sontek Flow Tracker	\$130/day	1	4	\$ 520.00
	YSI Data Sonde	\$130/day	1	4	<u>\$ 520.00</u>
Total					\$ 1,440.00
Discharge Monitoring	Field Vehicle	\$50/day	1	15	\$ 750.00
	Tablet PC	\$50/day	1	15	\$ 750.00
	Sontek IQ ADCP	\$400/month	3	12	\$ 14,400.00
	In Situ Pressure Transducer	\$200/month	3	12	\$ 7,200.00
	SCUBA Gear	\$100/Day	1	2	\$ 200.00
	Sontek Flow Tracker	\$130/day	1	6	<u>\$ 780.00</u>
Total					\$ 24,080.00
Grand Total					\$ 25,520.00



September 15, 2023

Mr. Gary Serviss
Vanasse Hangen Brustlin, Inc
301 North Cattlemen Rd, Suite 105
Sarasota, FL34232

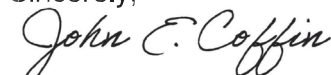
Dear Mr. Serviss:

Per your request, we are pleased to provide the following quote regarding the collection of stage and computation of discharge at six sites in the vicinity of Orlando Executive Airport during the 2024 water year:

Orlando Executive Airport 2024 WY Discharge Measurements and Data Computations					
Task	Description	Quote	Qty	Unit Price	Extended Price
	2024 Water Year				
1	Conduct 3 discharge measurements at 6 sites (OEA 1-6) during Water Year 2024		3	\$1,000.00	\$3,000.00
2	Conduct computation of 2023 WY stage and discharge data (OEA 1-6)		1	\$21,000.00	\$21,000.00
			2024 WY Total		\$24,000.00

We trust this information will meet your needs. Please feel free to contact us if we can be of any further assistance in this matter.

Sincerely,



John E. Coffin
Senior Hydrologist

BENCHMARK ENVIROANALYTICAL INC

1711 12th St East
Palmetto FL 34221

tel: (941)723-9986

fax: (941)723-6061

Lab Director email: dale.dixon@benchmarkea.net

Benchmark EA, Inc. utilizes the federal E-Verify program as required by FL law in contracts with public employers.

QUOTATION VHB Inc. AIRPORT QUARTERLY & ANNUAL 09.22.2023

Contact: GARY SERVISS

Date: 09.22.2023

Company: VHB

Phone No: 941.256.7151

Address: 301 North Cattlemen Rd Suite 105
Sarasota FL 34232-6429

Email: GSERVISS@VHB.com

PARAMETER	METHOD	MDL	MATRIX	EACH COST	TOTAL COST	COMMENTS
SIX SITES QUARTERLY						
AMMONIA AS N	350.1	0.012 MG/L	SW	\$19.00	\$114.00	6 sta / qtr
NITRATE/NITRITE AS N	353.2	0.004 MG/L	SW	\$17.00	\$102.00	6 sta / qtr
TOTAL KJELDAHL NITROGEN (TKN)	351.2	0.05 MG/L	SW	\$24.00	\$144.00	6 sta / qtr
TOTAL NITROGEN	351.2+353.2	CALC	SW	\$2.00	\$12.00	6 sta / qtr
ORTHOPHOSPHATE AS P (field filtered)	365.3	0.002 MG/L	SW	\$16.00	\$96.00	6 sta / qtr
TOTAL PHOSPHORUS	365.3	0.008 MG/L	SW	\$22.00	\$132.00	6 sta / qtr
TURBIDITY	180.1	0.05 NTU	SW	\$9.00	\$54.00	6 sta / qtr
TOTAL SUSPENDED SOLIDS (TSS)	SM240D	0.570 MG/L	SW	\$14.00	\$84.00	6 sta / qtr
TOTAL ALKALINITY	SM2320B	0.594 MG/L	SW	\$15.00	\$90.00	6 sta / qtr
BOD5	SM5210B	0.262 MG/L	SW	\$20.00	\$120.00	6 sta / qtr
				\$158.00	\$948.00	QUARTERLY
					X 4 qtrs	
					\$3,792.00	TOTAL 4qtrs
SIX SITES ANNUALLY						
TOTAL CALCIUM	200.7	0.030 MG/L	SW	\$15.00	\$90.00	6 sta / ANNUAL
TOTAL MAGNESIUM	200.7	0.006 MG/L	SW	\$15.00	\$90.00	6 sta / ANNUAL
HARDNESS	SM2340B	CALC	SW	\$8.00	\$48.00	6 sta / ANNUAL
CADMIUM	SM3113B	0.180 UG/L	SW	\$15.00	\$90.00	6 sta / ANNUAL
COPPER	SM3113B	0.346 UG/L	SW	\$15.00	\$90.00	6 sta / ANNUAL
IRON	200.7	0.029 MG/L	SW	\$13.00	\$78.00	6 sta / ANNUAL
LEAD	SM3113B	0.670 UG/L	SW	\$15.00	\$90.00	6 sta / ANNUAL
MERCURY*	1631 E	SUB PACE*	SW	\$115.00	\$690.00	6 sta / ANNUAL
ZINC	200.7	4.0 UG/L	SW	\$11.00	\$66.00	6 sta / ANNUAL
TOTAL PETROLEUM HYDROCARBONS	FLPRO	SUB ENCO*	SW	\$95.00	\$570.00	6 sta / ANNUAL
HERBICIDES*	8151	SUB ENCO*	SM	\$195.00	\$1,170.00	6 sta / ANNUAL
2,4,5-T			SW	INC	INC	6 sta / ANNUAL
2,4,5-TP (SILVEX)			SW	INC	INC	6 sta / ANNUAL
DALAPON			SW	INC	INC	6 sta / ANNUAL
2,4-DB			SW	INC	INC	6 sta / ANNUAL
DICAMBA			SW	INC	INC	6 sta / ANNUAL
DICHLOROPROP			SW	INC	INC	6 sta / ANNUAL
DINOSEB			SW	INC	INC	6 sta / ANNUAL
MCMP			SW	INC	INC	6 sta / ANNUAL
MCPD			SW	INC	INC	6 sta / ANNUAL
4-NITROPHENOL			SW	INC	INC	6 sta / ANNUAL
PENTACHLOROPHENOL			SW	INC	INC	6 sta / ANNUAL
ACIFLUORFEN			SW	INC	INC	6 sta / ANNUAL
CHLORAMBEN			SW	INC	INC	6 sta / ANNUAL
3,5-DICHLOROBENZOIC ACID			SW	INC	INC	6 sta / ANNUAL
DCCA DIACID			SW	INC	INC	6 sta / ANNUAL
PICLORAM			SW	INC	INC	6 sta / ANNUAL
				\$512.00	\$3,072.00	ANNUAL
QUALITY CONTROL SAMPLE ANALYSIS - 10% of \$6864.00					\$686.40	

		TOTAL ANNUAL COST (4qtrs + 1 annual w/QC)		\$7,550.40		
<p>Expedited Analysis where applicable - 24 Hr TAT = cost of parameter x2.5, 48 Hr TAT = cost of parameter x2, 72 Hr TAT = cost of parameter x1.5.</p> <p>* Subcontracted will include a \$31.00 Environmental Impact/ Disposal Fee accessed by PACE- Eurofins - an additional \$12.00 waste disposal fee, this is non-negotiable.</p> <p>Terms & Conditions:</p> <p>Quoted price includes all documentation and sample kit.</p> <p>Unless otherwise contracted invoice must be paid within 60 days. After 60 days a 1.5% monthly interest charge will be added.</p> <p>Tracy Jeffries 09.22.2023</p>						

TRUTH IN NEGOTIATION CERTIFICATION

The Consultant hereby certifies, covenants, and warrants that wage rates and other factual unit costs supporting the compensation for this project's agreement are accurate, complete, and current at the time of contracting.

The Consultant further agrees that the original agreement price and any additions thereto shall be adjusted to exclude any significant sums by which the Aviation Authority determines the agreement price was increased due to inaccurate, incomplete, or noncurrent wage rates and other factual unit costs. All such agreement adjustments shall be made within (1) year following the end of the contract. For purposes of this certificate, the end of the agreement shall be deemed to be the date of final billing or acceptance of the work by the Aviation Authority, whichever is later.

Consultant Vanasse Hangen Brustlin, Inc.

By: 

Print Name: Gary M. Serviss


Date: September 22, 2023

ATTACHMENT A

FINANCE FORM

Date:	10/30/2023	Requestor's Extension:	3463
Requestor's Name:	Dan Carrington	Preparer's Extension:	3463
Preparer's Name:	Dan Carrington	Solicitation #:	
Requestor's Department:	Planning	Contract # / Name:	Continuing Environmental Consulting Services
Description:		Procurement Committee Date:	11/21/2023
Vendor:	Vanasse Hangen Brustlin Inc	Agenda Item #:	

NON-PROJECT FUNDS: O&M

Account Code Format:	FY 23 Amount	FY24 Amount	FY25 Amount	FY26 Amount	FY27 Amount	TOTAL CONTRACT
901.443.870.5310010.000.000000		\$113,704.40				
Total Requisition:		\$113,704.40				
Requisition Number:		95614				
Funding Approver:						
OMB Notes:						

REVIEWED
By Magaly at 3:38 pm, Nov 15, 2023

Addenda / Amendments Awarded per Agreement - Summary for Committee

Vanasse Hangen Brustlin, Inc. -- Agreement No. 202104-CE8 Continuing Environmental Consulting Services

Add	Amd	Proj.	Description	PSC/CCM	Board	Exec.	PO#	\$ Amount	Cumul. per Add. \$ Amount	
000	000	-	Continuing Environmental Consulting Services	PSC	04/01/21	04/21/21	05/14/21	\$0.00	\$0.00	
001	000	-	FY21 On Call Permitting Assistance	CCM	05/25/21	NA	06/08/21	93534	\$20,000.00	\$20,000.00
002	000	-	FY21 Water Quality and Flow Monitoring	CCM	05/25/21	NA	06/08/21	93530	\$55,564.50	\$55,564.50
003	000	-	FY22 On Call Permitting Assistance	CCM	09/28/21	NA	10/05/21	94067	\$20,000.00	\$20,000.00
003	001	-	Additional FY22 On Call Permitting Assistance	CCM	03/01/22	NA	03/08/22		\$20,000.00	\$40,000.00
003	002	-	Additional FY22 On Call Permitting Assistance	CCM	08/23/22	NA	08/31/22		\$20,000.00	\$60,000.00
004	000	-	FY22 Water Quality and Flow Monitoring	CCM	10/26/21	NA	11/02/21	94078	\$107,252.80	\$107,252.80
005	000	-	State 404 Wetland Permitting Assistance	CCM	03/22/22	NA	03/29/22	94630	\$28,745.00	\$28,745.00
006	000	-	Mud Lake Conservation Easement Release Permitting Assistance	CCM	05/31/22	NA	06/14/22	94768	\$85,115.00	\$85,115.00
006	001	-	Additional Mud Lake Conservation Easement Release Permitting Assistance	CCM	11/07/23	NA			\$40,000.00	\$125,115.00
007	000	-	Implement Airport Wildlife Hazard Management Plan	CCM	06/28/22	NA	07/05/22	94765	\$14,953.00	\$14,953.00
008	000	-	FY23 Water Quality and Flow Monitoring	CCM	09/27/22	NA	10/20/22	95352	\$110,661.40	\$110,661.40
009	000	-	FY23 On Call Permitting Assistance	CCM	11/15/22	NA	12/07/22	95681	\$40,000.00	\$40,000.00
Total for Vanasse Hangen Brustlin, Inc. for Agreement No. 202104-CE8								\$562,291.70		

Addenda / Amendments Awarded per Agreement - Summary for Committee

Terms of Agreement

		<i>Original Duration</i> <i>1st Extension</i> <i>2nd Extension</i>	<i>Current</i> <i>Expiration</i>
Continuing Agreement Consultant - Environmental			
Vanasse Hangen Brustlin, Inc. Contract No.	05/14/21	Original Duration : :	/14/24



GREATER ORLANDO AVIATION AUTHORITY

Orlando International Airport
One Jeff Fuqua Boulevard
Orlando, Florida 32827-4392

MEMORANDUM

TO: Members of the Aviation Authority

FROM: Kathleen M. Sharman, Interim Chair, Procurement Committee/Chief Financial Officer

DATE: December 13, 2023

ITEM DESCRIPTION

Recommendation of the Procurement Committee to Approve Multiple Addenda to the Continuing Environmental Consulting Services Agreement with Vanasse Hangen Brustlin, Inc. at the Orlando International Airport (MCO), Orlando Executive Airport (ORL) and other facilities operated by the Aviation Authority

BACKGROUND

On April 21, 2021, the Aviation Authority Board approved Continuing Environmental Consulting Services Agreements with the following firms, following a competitive award process in compliance with state statutes and Aviation Authority policies.

- Breedlove, Dennis and Associates, Inc. (VBE)
- Bio-Tech Consulting, Inc.
- DRMP, Inc.
- The Transit Group, Inc. d/b/a Ecological Associates, Inc.
- EXP U.S. Service, Inc.
- MSE Group, LLC
- Terracon Consultants, Inc.
- Vanasse Hangen Brustlin, Inc.

Services may include, but are not limited to, evaluation and assessment of wildlife issues, uplands and wetlands evaluation, habitat analysis, threatened and endangered species issues, jurisdictional wetland determinations, water quality analysis, land management, and monitoring of wetlands mitigation on facilities operated or purchased by the Aviation Authority and all other related services including coordination with the Aviation Authority, its Consultants, the City of Orlando and all agencies having jurisdiction over the facilities. The Services may also include preparation of required notices and reports, coordination and providing assistance with requirements of authorities having jurisdiction over various mitigation sites, documentation of existing environmental conditions, preparation of environmental studies, technical support, and assistance with permitting activities which may be required where the Aviation Authority elects not to solicit letters of interest by means of public advertisement.

Since April 2021, a total of 9 addenda, and applicable amendments, to the Continuing Environmental Consulting Services Agreement with Vanasse Hangen Brustlin, Inc. have been approved. A summary of these approvals can be provided upon request.

ISSUES

Per the Aviation Authority's Policy 450.04, the Aviation Authority Board must approve all contract addenda and applicable amendments that result in the value of any contract being increased, in the

aggregate, by \$250,000 or more over the contract value. The Procurement Committee (PC) recommended approval of addenda to the above-referenced agreement, as follows:

- Addendum for Water Quality and Flow Monitoring for Fiscal Year (FY) 2024 at ORL, for the total amount of \$113,704.40, which includes the not-to-exceed fee amount of \$56,449 and the not-to-exceed expense amount of \$57,255.40, with funding from previously-approved ORL Revenue Funds. Services will consist of water quality monitoring associated with the Numeric Nutrient Rule for Florida's Lakes and Flowing Waters during FY 2024. Samples will be taken at different locations throughout ORL for quarterly and bi-annual parameters. Services will include, but are not limited to, water quality monitoring, discharge measurements, continuous stage/ discharge monitoring and data downloads, and preparation of associated annual reports. The Aviation Authority has reviewed the proposal from Vanasse Hangen Brustlin, Inc., and determined that Vanasse Hangen Brustlin, Inc. proposes 7% Minority and Women Business Enterprise (MWBE) participation on this Addendum and certifies that Vanasse Hangen Brustlin, Inc. is in good standing as it relates to its small business participation. *[Reference PC Meeting held November 21, 2023, Agenda Item No. III-E].*
- Addendum for FY 2024 On-Call Permitting Assistance at MCO, for the total not-to-exceed fee amount of \$40,000, which includes the not-to-exceed fee amount of \$39,733 and the not-to-exceed expense amount of \$267, with funding from previously-approved Operations and Maintenance Funds. Services will include, but are not limited to, on an as-needed basis, permitting assistance, including preparation, tracking, and compliance with federal, state and local permitting regulations and requirements at MCO. The Aviation Authority has reviewed the proposal from Vanasse Hangen Brustlin, Inc., and determined that Vanasse Hangen Brustlin, Inc. does not propose any small business participation on this Addendum because of the on-call nature of the required services to be provided. The Small Business Department certifies that Vanasse Hangen Brustlin, Inc. is in good standing as it relates to its small business participation on those addenda on which small business participation is required in its professional services agreement. *[Reference PC Meeting held November 21, 2023, Agenda Item No. III-F].*

As this addendum will result in an aggregate increase to the Aviation Authority's Agreement with Ricondo & Associates, Inc. exceeding \$250,000, Aviation Authority Board approval is required, as outlined in the memorandum.

SMALL BUSINESS

Individual small business participation is included for each of the addenda listed above.

ALTERNATIVES

None.

FISCAL IMPACT

The fiscal impact is \$153,704.40. Funding is from previously-approved ORL Revenue Funds and previously-approved Operations and Maintenance Funds.

RECOMMENDED ACTION

It is respectfully requested that the Aviation Authority Board resolve to accept the recommendation of the Procurement Committee for the approval of Addenda to the Continuing Environmental Consulting Services Agreement with Vanasse Hangen Brustlin, Inc. for the following services, and authorize an Aviation Authority Officer or the Chief Executive Officer to execute the necessary documents following satisfactory review by legal counsel:

- (a) Water Quality and Flow Monitoring for FY 2024 at ORL, for the total amount of \$113,704.40, which includes the not-to-exceed fee amount of \$56,449 and the not-to-exceed expense amount of \$57,255.40, with funding from previously-approved ORL Revenue Funds; and,
- (b) FY 2024 On-Call Permitting Assistance at MCO, for the total not-to-exceed fee amount of \$40,000, which includes the not-to-exceed fee amount of \$39,733 and the not-to-exceed expense amount of \$267, with funding from previously-approved Operations and Maintenance Funds.

MEMORANDUM

TO: Members of the Procurement Committee

FROM: Edelis Molina, Manager Small Business Programs

DATE: November 21, 2023

RE: Request for Recommendation to Aviation Authority Board of Approval an Addendum to the Continuing Environmental Consulting Services Agreement with Vanasse Hangen Brustlin Inc. to provide Water Quality and flow Monitoring for FY24 at Orlando Executive Airport

We have reviewed the qualifications of the subject contract's MWBE/LDB/VBE specifications and determined that Vanasse Hangen Brustlin, Inc. proposes 7% MWBE participation on this addendum.

Our analysis indicates that Vanasse Hangen Brustlin, Inc. is eligible for award of the subject addendum.

MWBE UTILIZATION FORM FOR NON-FEDERALLY FUNDED PROJECTS**PLEASE COMPLETE THIS FORM**

This form should be used to report Construction and Engineering /Professional Services activities.

Name of Airport: Orlando International Airport

Telephone No: (407) 825-7179

Address: One Jeff Fuqua Boulevard, Orlando, FL 32827

Project Name & Number: Request for Recommendation to Aviation Authority Board of Approval an Addendum to the Continuing Environmental Consulting Services Agreement with Vanasse Hangen Brustlin Inc. to provide Water Quality and flow Monitoring for FY24 at Orlando Executive Airport

1. Construction Information:

Addendum Amount: _____

2. MWBE Goal by Group Representation:

Asian Pacific American	_____	Actual Result	_____
Asian Subcontinent American	_____	Actual Result	_____
Black American	_____	Actual Result	_____
Caucasian Female American	_____	Actual Result	_____
Hispanic American	_____	Actual Result	_____
Native American	_____	Actual Result	_____
Other	_____	Actual Result	_____
Total MWBE Participation	-	Actual Result	_____

3.a. Prime Contractor Information:

Name: _____
Address: _____
City, State, Zip: _____
Telephone: _____

3.b. Name and Address of MWBE Subcontractor

Name: _____
Address: _____
City, State, Zip: _____
Telephone: _____

3.c. *Identity:

Work Item(s): _____
Amount of Subcontract _____
Percent of Prime Contract (%): _____

4. Engineering/Professional Services Information:

Addendum Amount: \$113,704.40

5. MWBE Goal by Group Representation:

Asian Pacific American	-	Actual Result	0%
Asian Subcontinent American	-	Actual Result	0%
Black American	-	Actual Result	0%
Caucasian Female American	7,550.40	Actual Result	7%
Hispanic American	-	Actual Result	0%
Native American	-	Actual Result	0%
Other	-	Actual Result	0%
Total MWBE Participation	7,550.40	Actual Result	7%

6.b. Engineering / Professional Service Firm Information:

Name: Vanasse Hangen Brustlin, Inc.
Address: 400 North Ashley Drive, Suite 1900
City, State, Zip: Tampa, FL 33602
Telephone: (813) 327-5450

6.b. Name and Address of MWBE Subconsultant

Name: Benchmark Enviroanalytical, Inc
Address: 1711 12th Street East
City, State, Zip: Palmetto, FL 34221
Telephone: (941) 723-9986

6.c. *Identity:

Work Item(s): Caucasian Female American
Amount of Subcontract \$7,550.40
Percent of Prime Contract (%): 7%

* In Items 3.c. and 6.c. above specify the identity of MWBE Subcontractors and E/PS Firms (e.g. Black American, Hispanic American, Asian Subcontinent American, Asian Pacific American, Caucasian Female American, Native American & Other)