

**ADDENDUM NO. 11
TO THE AGREEMENT DATED MARCH 31, 2023
BETWEEN GREATER ORLANDO AVIATION AUTHORITY
AND KIMLEY-HORN AND ASSOCIATES, INC.**

Project: Stormwater Management Program Development for W-507 Stormwater Maintenance and Program Development, Orlando International Airport

THIS ADDENDUM is effective this 27th day of March, 2024 by and between the **GREATER ORLANDO AVIATION AUTHORITY** (“Aviation Authority”), and **KIMLEY-HORN AND ASSOCIATES, INC.** (“Consultant”).

WITNESSETH:

WHEREAS, by Agreement dated March 31, 2023, Aviation Authority and Consultant entered into an agreement for Consultant to provide Continuing Civil Engineering Consulting Services; and

WHEREAS, under the Agreement, Consultant agreed to perform such additional services for the Aviation Authority as are contained in any additional scope of work established by the Aviation Authority in any addendum to the Agreement and accepted in writing by the Consultant; and

WHEREAS, the Aviation Authority and the Consultant desire to enter into this Addendum to the Agreement to provide for additional services to be rendered by the Consultant under the terms of said Agreement.

NOW, THEREFORE, in consideration of the premises and the mutual covenants herein contained, the Aviation Authority and the Consultant do hereby agree as follows:

1. Consultant shall perform additional services in accordance with the terms of the Agreement and the attached Exhibit “A.” Consultant shall be paid for such additional services according to the payment terms set forth in the Agreement.
2. Consultant shall be compensated for such additional services in the **NOT TO EXCEED amount of SIX HUNDRED TWENTY-ONE THOUSAND THREE HUNDRED SIXTY-SIX AND NO/100 DOLLARS (\$621,366.00)**, broken down as follows:

Professional Fees:	NTE:	\$621,366.00
Professional Fees:	LS:	\$0.00
Reimbursable Expenses:	NTE:	<u>\$0.00</u>
Total:		\$621,366.00

3. A. Consultant hereby certifies that it is not on the Scrutinized Companies that Boycott Israel List and is not engaged in a boycott of Israel, as defined in Florida Statutes § 287.135, as amended;

AND

B. (applicable to agreements that may be \$1,000,000 or more) - Consultant hereby certifies that it is: (1) not on the Scrutinized Companies with Activities in Sudan List or the Scrutinized Companies with Activities in the Iran Petroleum Energy Sector List as defined in Florida Statutes § 287.135; and (2) not engaged in business operations in Cuba or Syria, as defined in Florida Statutes § 287.135, as amended.

4. Aviation Authority may terminate the Agreement for cause and without the opportunity to cure if the Consultant is found to have submitted a false certification or has been placed on the Scrutinized Companies that Boycott Israel List or is engaged in a boycott of Israel.

In the event the Agreement is for One Million Dollars (\$1,000,000.00) or more, Aviation Authority may terminate this Agreement for cause and without the opportunity to cure if the Consultant is found to have submitted a false certification or has been placed on the Scrutinized Companies with Activities in Sudan List or the Scrutinized Companies with Activities in the Iran Petroleum Energy Sector List or is engaged in business operations in Cuba or Syria.

5. Except as expressly modified in this Addendum, the Agreement dated March 31, 2023 and all prior addenda will remain in full force and effect.

IN WITNESS WHEREOF, the parties hereto by their duly authorized representatives, have executed this Addendum this day of Mar 29, 2024.


GREATER ORLANDO AVIATION AUTHORITY

Approved as to Form and Legality
(for the benefit of GOAA only)
this day of Mar 28, 2024

Karen Ryan

By: boxSIGN 1J8RLK51-18758P37

**NELSON MULLINS BROAD AND CASSEL, Legal Counsel
Greater Orlando Aviation Authority**

By: 
boxSIGN 1V3Q39J4-18758P37

Kevin J. Thibault, P.E.
Chief Executive Officer

KIMLEY-HORN AND ASSOCIATES, INC.

By: 
boxSIGN 4YRYK7L5-18758P37

Signature (Duly Authorized Rep.)

Jonathan A Martin
Printed Name

Sr Vice President
Title



INFORMATION ITEM
Original CCM
03/12/2024
Item IV-F
Revised Backup

Orlan
One Sun Raqua Boulevard
Orlando, Florida, 32827-4392
(407) 825-2001

Memorandum

To: Members of the Construction Committee

From: Keegan O'Brien, P.E., Assistant Vice President of Environmental

Date: March 12, 2024

Re: Request for recommendation of Approval of an Addendum to the Continuing Civil Engineering Services Agreement with Kimley-Horn and Associates, Inc. to provide Stormwater Management Program Development, for W-00507-MCO Stormwater Maintenance and Program Development at Orlando International Airport

Consultant's proposal dated February 27, 2024, is to provide stormwater management program development for all of MCO's dry and wet ponds for W-00507-MCO at the Orlando International Airport. Funding required in current and subsequent fiscal years will be allocated from the Operations and Maintenance Funds, as approved through the budget process and when funds become available.

If approved these services would be effective the date of the Aviation Authority Board approval. ~~March 12, 2024.~~

This continuing consultant was selected for this task based on (all that apply):

Experience Available Personnel Current Workload

Expertise Equitable Distribution Other: _____

The MWBE/LDB participation has been reviewed by the Office of Small Business Development. Their findings and recommendation are attached.

Funding is from O&M Stormwater Maintenance 301.631.170.5460002.000.000000. Funding source verified by Andrea Harper of Construction Finance on 3/8/24 as correct and available.

It is respectfully requested that the Construction Committee recommend to the Aviation Authority Board approval of an Addendum to the Continuing Civil Engineering Services Agreement with Kimley-Horn and Associates, Inc. for the services contained herein and the amount as shown below:

Not to Exceed Fees	\$621,366.00
Lump Sum Fees	\$0.00
Not to Exceed Expenses	\$0.00
TOTAL	\$621,366.00
AAC – Compliance Review Date	<i>Jm</i> 3/6/2024
AAC – Funding Eligibility Review Date	<i>Jm</i> 3/6/2024



February 27, 2024

Ms. Keegan O'Brien, P.E.
Assistance Vice President or Environmental
Greater Orlando Aviation Authority
5855 Cargo Road
Orlando, Florida 32827
mary.obrien@goaa.org

**Re: Master Stormwater Management Program
at Orlando International Airport**

Dear Keegan:

Attached, please find our proposal to complete the design services for the subject project, in accordance with our Continuing Civil Engineering Consultant Services contract (March 31, 2023) and approved rates.

The proposal submitted herein is for a total value of \$621,366; of which \$621,366 is not-to-exceed reimbursable labor fee, including survey. The surveyor's (L&S Diversified, LLC.) scope has also been included for reference. The following tables are attached for backup:

- Table C-1, Summary of Fees and Expenses
- Table C-4, Summary of Not-to-Exceed Fees and Expenses
- Table C-5 (Kimley-Horn), Breakdown of Not-to-Exceed Reimbursable Fees for Kimley-Horn
- Table C-5 (L&S Diversified), Breakdown of Not-to-Exceed Reimbursable Fees for L&S Diversified
- Table C-6 (Kimley-Horn), Breakdown of Not-to-Exceed Reimbursable Expenses
- Table C-7, LDB/MWBE Participation Schedule
- Table C-9, Summary of Contracted Hourly Rates

Please note that for this scope of work, we anticipate 48.2% MWBE participation.

We sincerely appreciate the opportunity to provide these services to you and the Greater Orlando Aviation Authority. Please contact me if you have any questions.

Very truly yours,
KIMLEY-HORN AND ASSOCIATES, INC.

Jonathan A. Martin, P.E.
Principal

Brian S. Ashby, P.E.
Vice President

CC:

K:\ORL_Aviation_marketing\GOAA\2023-12-27-MCO Pond Maintenance Program\Coverletter-OBrien-Master Stormwater Management Program - 2024-02-27.docx

**ATTACHMENT A: SCOPE OF SERVICES
ORLANDO INTERNATIONAL AIRPORT
MASTER STORMWATER MANAGEMENT PROGRAM
GREATER ORLANDO AVIATION AUTHORITY**

OVERVIEW

The project is located at the Orlando International Airport (MCO). Due to degradation over many years, the 103 stormwater ponds and approximately 65,000 LF of various canals throughout the campus will need to be scheduled for restoration, which will consist of removing the built-up sediment and muck from the pond bottoms, removal of siltation and debris from major conveyance culverts, and resetting or replacing existing drainage structures to match the appropriate pond side slopes, or where structures are in disrepair. The ponds and canals must also be restored in order to meet the EPA's National Pollutant Discharge Elimination System (NPDES) MS4 permit requirements for the campus and water quality standards set forth by the FDEP. The NPDES permit requires the implementation of a water quality management plan for all permitted ponds. The implementation of a stormwater management program will assist the Authority to meet these regulatory requirements by providing standards for which all scheduled pond and canal restoration activities shall adhere to.

In order to perform the work required for pond and canal restoration, the waterbodies will need to be either dredged or dewatered and excavated, and the removed sediment and muck shall be disposed of at an approved disposal site. Additionally, due to the increasing trend in the current construction markets, the Program will need to be developed to include relevant construction costs and scheduling.

SCOPE:

INTRODUCTION

This effort consists of the planning and development of a master stormwater management program for the ponds and canals within the Orlando International Airport campus. Restoration includes removing settled material from the bottom of ponds to achieve conditions as were originally permitted, erosion control, maintenance of traffic, hauling, and disposal of all excavated material at a disposal site approved by the Owner, as well as rehabilitation of failed drainage structures and pond slopes and associated features.

The planning will consist of developing a set of standard drawings (Program) and Specifications that will be used as the basis for the scheduled restoration of each pond and canal. The Management Program will include a single transect survey of each pond and canal, utilizing sounding technology, which will provide a cross-section of the existing conditions within each pond and canal, drainage structures from GOAA master drainage atlas associated with the

waterbodies, permitted conditions, and an estimated quantity of material to be excavated, drainage structures to be repaired, and sedimentation to be removed from interconnected culverts. The management program will also include a restoration schedule along with an associated Opinion of Probable Cost for each pond and canal in the Program.

Specifically this effort includes:

1. Complete single-transect survey of 103 ponds, approximately 30,000 LF of various conveyance canals, and approximately 33,000 LF of the B-8 bypass canal, shown in exhibit 1 (attached herein).
2. Development of cross-sectional areas depicting approximate existing conditions based on the single-transect survey, and proposed/permitted conditions.
3. Estimation of quantity of material that is to be excavated from each pond, canal, and culvert for the purposes of developing a Stormwater Management Program Schedule.
4. Development of Pond Restoration Schedule that will include water body/structure name, schedule, estimated construction costs, soft costs, and total costs with contingency and escalation applied throughout the duration of the schedule.

The project is expected to require professional civil design and surveying services. The basic scope of services for this project includes the following Tasks:

Task 1 - Data Collection and Preliminary Design

Task 2 – Prepare Stormwater Management Program Documents

TASK ONE - Data Collection and Preliminary Design

The purpose of this Task is to collect the data needed to prepare the Stormwater Management Program. The data collection effort will involve:

- (1) Attend one design kick-off and scope verification meeting with relevant stakeholders. Perform site visit of the project area. Provide minutes of that meeting.
- (2) Obtain and review relevant existing record drawings, plans, existing airport base mapping and airport layout plan (ALP).
- (3) Obtain single transect survey of 103 ponds, the Heintzelman Blvd canal, approximately 30,000 LF of various conveyance canals, and approximately 33,000 LF of the B-8 bypass canal, shown in exhibit 1 (attached herein), with associated major drainage structures where recent relevant record drawings are not available.
- (4) Define and list design criteria applicable to the project.
- (5) Attend one review meeting with GOAA.
- (6) Provide administration for the services including progress reports, record keeping, coordination, and invoicing.

The preliminary design effort will begin with a review of all the ponds and major canals within the Orlando International Airport's campus. A schedule will be developed which prioritizes the restoration of each pond and canal. Where recent and sufficient record drawings in CAD are not available and additional information is needed, single-transect survey data will be obtained to aid in the design of the Program.

A set of preliminary documents will be prepared from the information developed during the preliminary review. The preliminary documents are intended to convey our understanding of the intent of the proposed Stormwater Management Program and will include only minimal design level notations. Kimley-Horn will meet with GOAA to discuss the preliminary design plans and incorporate input from this meeting into the 95% Program Documents.

Assumptions:

- (1) Electronic base mapping of sufficient accuracy and coordinate control already exists and will be provided by GOAA for use as base sheets in preparing the preliminary program.
- (2) No geotechnical services will be required.

Deliverables:

- (1) 1 copy of the Preliminary Stormwater Management Program.
- (2) Preliminary projection of Probable Restoration Costs based on the Preliminary Stormwater Management Program.

TASK TWO - Prepare Stormwater Management Program Documents

The purpose of this Task is to prepare a Stormwater Management Program and schedule that can be used by GOAA for future Contract Work. The Program Schedule will provide an outline that depicts GOAA ponds and major canal that are planned to be restored, a schedule that lists the approximate time period for which each pond and canal shall be restored, the estimated construction and soft costs with an applied contingency and yearly escalation factor, as well as a set of design standards to which each individual pond and canal restoration project shall adhere to. The Program will also include the development of a standard set of Technical Specifications that can be used as a basis for each individual future pond or canal restoration project.

This Task involves the development of Program Documents that include cross-sections at appropriate intervals for the 103 ponds, the Heintzelman Blvd canal, approximately 30,000 LF of various conveyance canals, and approximately 33,000 LF of the B-8 bypass canal. Conceptual site layout plans will also be prepared for the various ponds and canals that will be included in the Program. The site plans will include approximate existing site conditions (based on the single-transect survey noted in Task One), drainage structures (from the MCO Drainage Atlas), seasonal high-water elevations, and proposed conditions. Along with the site plans and cross-

sectional detail plans for each pond or canal, a cover sheet, sheet index, general notes and utility contacts, and Program schedule will be developed and included in the final Stormwater Management Program.

Under this Task, a pre-final draft Stormwater Management Program and Technical Specifications will be prepared for review and approval by GOAA. All review comments generated by GOAA during review of the Preliminary Design Documents will be incorporate in the pre-final draft. The final Stormwater Management Program and Technical Specifications will incorporate comments generated from the pre-final draft submittal and will then be submitted to GOAA for final approval.

Deliverables:

- (1) 1 electronic copy of the Pre-Final Stormwater Management Program and Technical Specifications
- (2) 1 electronic copy of the Final Stormwater Management Program and Technical Specifications

SCHEDULE

The tentative schedule is presented in the following table. The durations are tentative and subject to final meeting dates.

NTP	Contract Execution & Design NTP
3 months from NTP	Preliminary Documents Meeting
10 months from NTP	Pre-Final Draft Submittal
2 months from receipt of Pre-Final submittal comments	Final Documents Submittal



GREATER ORLANDO AVIATION AUTHORITY
**MASTER
 STORMWATER
 POND
 RESTORATION
 PROGRAM**
 ORLANDO
 INTERNATIONAL
 AIRPORT

Kimley»Horn

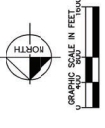
Revisions

No.	Date	Description

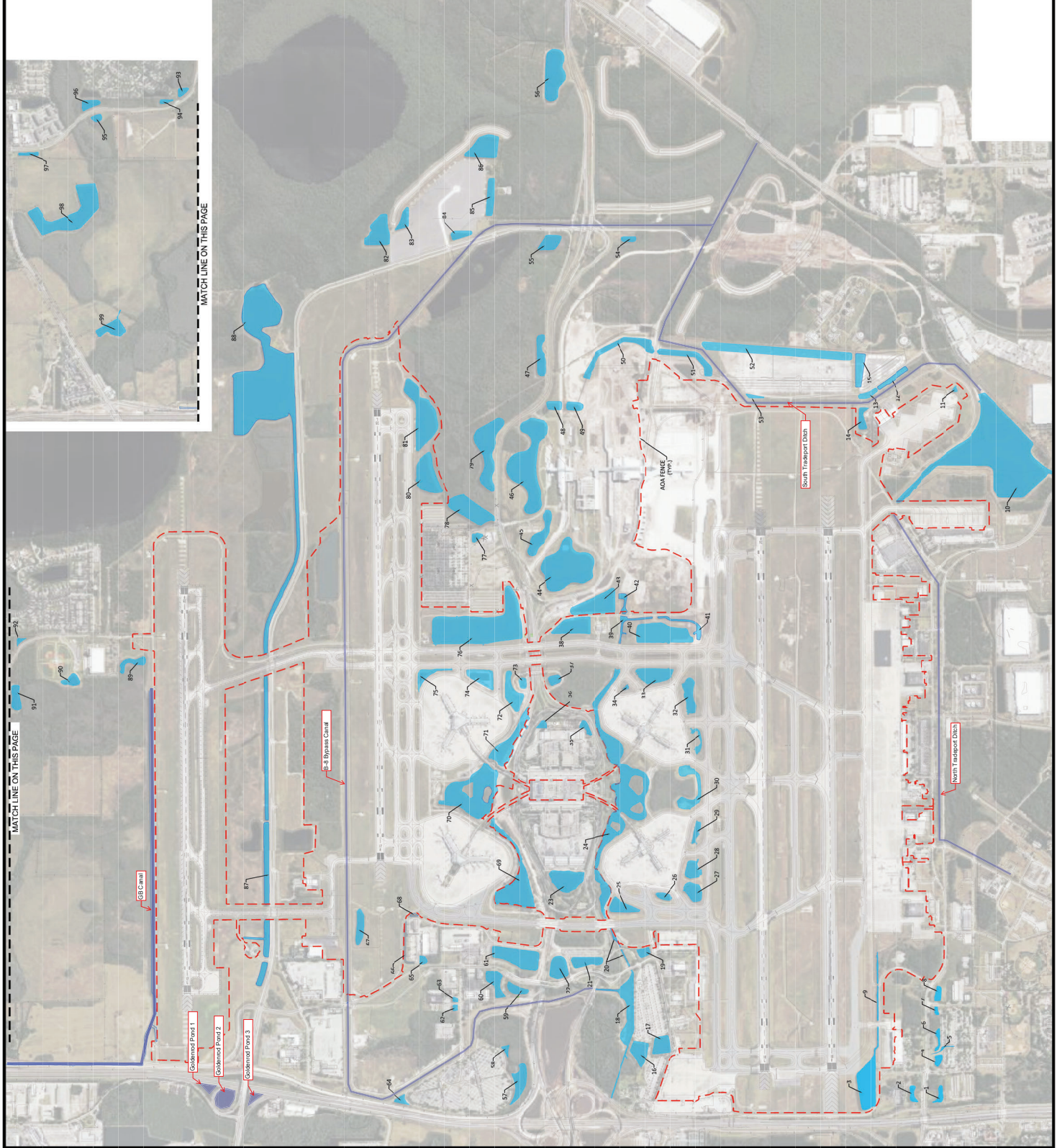
Key Plan

Project No.:	
Designed By:	BSA
Drawn By:	BSA
Checked By:	JAM
Issue Date:	
Drawing Scale:	AS NOTED
Drawing Title:	

Drawing No.
EXHIBIT 1



LEGEND
 --- AOA FENCE



Date: Jan 08, 2024 - Time: 02:21 pm - Plotted by: J. Lopez
 Drawing File: K:\08_Audio\working\GMA\2023-12-20-MCO Pond Inspection Program\Exhibit1\Map Maintenance Program Exhibit-2023-12-27.dwg

EXHIBIT A - CONSULTANT'S COMPENSATION PROPOSAL

Table C-1

Phase of Project:	Data Collection and Preliminary Design	Prepare Stormwater Management Program Documents	SUBTOTAL	TOTAL CONTRACT
1.0 Lump Sum Fee:	\$0.00	\$0.00	\$0.00	\$0.00
2.0 Not to Exceed Reimbursable Fee:	\$391,738.00	\$229,628.00	\$621,366.00	\$621,366.00
3.0 Not to Exceed Reimbursable Expenses:	\$0.00	\$0.00	\$0.00	\$0.00
4.0 TOTAL CONTRACT VALUE:	\$391,738.00	\$229,628.00	\$621,366.00	\$621,366.00

Total Lump Sum Labor Hours:	0	0	0.0	0
Total Not to Exceed Reimbursable Labor Hours:	4,304	1,806	6,110	6,110
TOTAL LABOR HOURS:	4,304	1,806	6,110	6,110
Average Hourly Rate:	\$91.02	\$127.15	\$101.70	\$101.70

EXHIBIT A - CONSULTANT'S COMPENSATION PROPOSAL

Table C-4

Phase of Project:	Data Collection and Preliminary Design		Prepare Stormwater Management Program Documents		TOTAL	Avg. Rate
	Labor Hours	Total Fee	Labor Hours	Total Fee		
Kimley-Horn & Associates						
Not to Exceed Reimbursable Fee	702	\$92,304	1,806	\$229,628	\$321,932	\$128
Not to Exceed Reimbursable Expenses		\$0		\$0	\$0	
Sub-Total Designer	702	\$92,304	1,806	\$229,628	\$321,932	\$128
L&S Diversified, LLC.						
Not to Exceed Reimbursable Fee	3,602	\$299,434	0	\$0	\$299,434	\$83
Not to Exceed Reimbursable Expenses		\$0		\$0	\$0	
Sub-Total L&S Diversified, LLC.	3,602	\$299,434	0	\$0	\$299,434	\$83
Total Not to Exceed Amount:	4,304	\$391,738	1,806	\$229,628	\$621,366	\$102

EXHIBIT A - CONSULTANT'S COMPENSATION PROPOSAL

Table C-5 (Kimley-Horn)

Position:	QC Reviewer		Sr. Project Manager		Engineer		Engineer Intern		Senior CADD Designer		Sr. Administrative Assistant		TOTAL			
	\$268		\$248		\$133		\$111		\$131		\$78		Labor Hours	Cost	Avg. Hourly Rate	
Rate (\$/Hour):	Labor Hours	Cost	Labor Hours	Cost	Labor hours	Cost	Labor Hours	Cost	Labor Hours	Cost	Labor Hours	Cost				Labor Hours
Data Collection and Preliminary Design																
Attend kick-off meeting with Owner		\$0	4	\$992		\$0	4	\$444		\$0		\$0	8	\$1,436	\$180	
Review of Record Drawings & Documents		\$0	10	\$2,480	15	\$1,995	50	\$5,550	25	\$3,275		\$0	100	\$13,300	\$133	
Establish Design Criteria		\$0	2	\$496		\$0		\$0	5	\$655		\$0	7	\$1,151	\$164	
Prepare Pond Survey Plan		\$0	4	\$992	10	\$1,330	20	\$2,220	20	\$2,620		\$0	54	\$7,162	\$133	
Review Survey data	3	\$804	6	\$1,488	10	\$1,330	35	\$3,885	35	\$4,585		\$0	89	\$12,092	\$136	
Prepare Preliminary Stormwater Management Program	4	\$1,072	20	\$4,960	60	\$7,980	120	\$13,320	40	\$5,240		\$0	244	\$32,572	\$133	
Prepare Preliminary Stormwater Management Program Specifications	2	\$536	5	\$1,240	20	\$2,660	40	\$4,440		\$0	40	\$3,120	107	\$11,996	\$112	
Prepare Preliminary Opinion of Probable Costs	1	\$268	3	\$744	5	\$665	30	\$3,330	5	\$655	6	\$468	50	\$6,130	\$123	
Package and Submit Preliminary Documents		\$0	1	\$248		\$0	3	\$333		\$0	3	\$234	7	\$815	\$116	
Progress Reports, Record Keeping and Coordination		\$0	10	\$2,480		\$0	10	\$1,110		\$0	5	\$390	25	\$3,980	\$159	
Attend review meeting and prepare minutes		\$0	4	\$992		\$0	4	\$444		\$0	3	\$234	11	\$1,670	\$152	
Sub-Total Data Collection and Preliminary Design	10	\$2,680	69	\$17,112	120	\$15,960	316	\$35,076	130	\$17,030	57	\$4,446	702	\$92,304	\$131	
Prepare Stormwater Management Program Documents																
Prepare Pre-Final Draft Stormwater Management Program	6	\$1,608	40	\$9,920	200	\$26,600	320	\$35,520	320	\$41,920		\$0	886	\$115,568	\$130	
Prepare Pre-Final Draft Stormwater Management Program Technical Specifications	3	\$804	5	\$1,240	40	\$5,320	80	\$8,880		\$0	40	\$3,120	168	\$19,364	\$115	
Prepare Pre-Final Draft Opinion of Probable Costs	3	\$804	5	\$1,240	30	\$3,990	60	\$6,660	30	\$3,930	30	\$2,340	158	\$18,964	\$120	
Package and Submit Pre-Final Documents for Review		\$0	1	\$248		\$0	3	\$333		\$0	3	\$234	7	\$815	\$116	
Attend Pre-Final Draft Review Meeting and Prepare Meeting Minutes		\$0	4	\$992		\$0	4	\$444		\$0	3	\$234	11	\$1,670	\$152	
Prepare Final Stormwater Management Program	3	\$804	18	\$4,464	60	\$7,980	160	\$17,760	160	\$20,960		\$0	401	\$51,968	\$130	
Prepare Final Stormwater Management Program Technical Specifications	3	\$804	2	\$496	20	\$2,660	40	\$4,440		\$0	20	\$1,560	85	\$9,960	\$117	
Prepare Final Opinion of Probable Costs	3	\$804	5	\$1,240	15	\$1,995	30	\$3,330	15	\$1,965	15	\$1,170	83	\$10,504	\$127	
Package and Submit Final Documents		\$0	1	\$248		\$0	3	\$333		\$0	3	\$234	7	\$815	\$116	
Sub-Total Prepare Stormwater Management Program Documents	21	\$5,628	81	\$20,088	365	\$48,545	700	\$77,700	525	\$68,775	114	\$8,892	1,806	\$229,628	\$127	
TOTAL NOT TO EXCEED REIMBURABLE FEE:	31	\$8,308	150	\$37,200	485	\$64,505	1,016	\$112,776	655	\$85,805	171	\$13,338	2,508	\$321,932	\$128	

EXHIBIT A - CONSULTANT'S COMPENSATION PROPOSAL
Table C-5 (L&S Diversified)

Position:	Sr. Survey Crew Chief		Sr. Instrument Man		Sr. Project Manager		Sr. CADD Technician		TOTAL		
	\$97		\$62		\$173		\$78		Labor Hours	Cost	Avg. Hourly Rate
Rate (\$/Hour):	Labor Hours	Cost	Labor Hours	Cost	Labor Hours	Cost	Labor Hours	Cost			
L&S Diversified, LLC.											
Data Collection and Preliminary Design											
Survey Control	272	\$26,384	272	\$16,864	54	\$9,342	272	\$21,216	870	\$73,806	\$85
Hydrographic Survey on Canals	144	\$13,968	144	\$8,928	16	\$2,768	78	\$6,084	382	\$31,748	\$83
Hydrographic Survey on Ponds	930	\$90,210	930	\$57,660	82	\$14,186	408	\$31,824	2,350	\$193,880	\$83
Sub-Total Data Collection and Preliminary Design	1346	\$130,562	1346	\$83,452	152	\$26,296	758	\$59,124	3,602	\$299,434	\$83
TOTAL NOT TO EXCEED REIMBURABLE FEE:	1346	\$130,562	1346	\$83,452	152	\$26,296	758	\$59,124	3,602	\$299,434	\$83

EXHIBIT A - CONSULTANT'S COMPENSATION PROPOSAL

Table C-7

TABLE C-7a DBE PARTICIPATION SCHEDULE

NAME OF SUBCONSULTANT	PROPOSED SCOPE OF SERVICES	FEE	PROPOSED PARTICIPATION
			0.0%
TOTAL PROPOSED PARTICIPATION		\$0.00	0.0%

TABLE C-7b MWBE PARTICIPATION SCHEDULE

NAME OF SUBCONSULTANT	PROPOSED SCOPE OF SERVICES	FEE	PROPOSED PARTICIPATION
L&S Diversified, LLC.	Surveying Services	\$299,434.00	48.2%
TOTAL PROPOSED PARTICIPATION		\$299,434.00	48.2%

TABLE C-7c LDB PARTICIPATION SCHEDULE

NAME OF FIRM	PROPOSED SCOPE OF SERVICES	FEE	PROPOSED PARTICIPATION
			0.0%
TOTAL PROPOSED PARTICIPATION		\$0.00	0.0%

EXHIBIT A - CONSULTANT'S COMPENSATION PROPOSAL

Table C-9

All amounts invoiced by the Consultant as Reimbursable Fees shall be calculated on the basis of the actual number of hours of services rendered under this Agreement by each of the positions defined and by the new positions as identified below, multiplied by the corresponding Contract Hourly Rate, up to the Not to Exceed limit defined by the Agreement. Include information on positions held by both the design consultant and each subconsultant.

<u>FIRM</u>	<u>POSITION</u>	<u>CONTRACT HOURLY RATE</u>
Kimley-Horn and Associates, Inc	QC Reviewer	268.00
Kimley-Horn and Associates, Inc	Sr. Project Manager	248.00
Kimley-Horn and Associates, Inc	Sr. Engineer	188.00
Kimley-Horn and Associates, Inc	Engineer	133.00
Kimley-Horn and Associates, Inc	Engineering Intern	111.00
Kimley-Horn and Associates, Inc	Senior CADD Designer	131.00
Kimley-Horn and Associates, Inc	Senior Scientist	206.00
Kimley-Horn and Associates, Inc	Sr. Administrative Assistant	78.00
L&S Diversified, LLC.	Sr. Survey Crew Chief	\$97.00
L&S Diversified, LLC.	Survey Crew Chief	\$72.00
L&S Diversified, LLC.	Sr. Instrument Man	\$62.00
L&S Diversified, LLC.	Instrument Man	\$43.00
L&S Diversified, LLC.	Principal	\$231.00
L&S Diversified, LLC.	Sr. Project Manager	\$173.00
L&S Diversified, LLC.	Sr. CADD Technician	\$78.00
L&S Diversified, LLC.	CADD Technician	\$63.00



L & S Diversified

Surveying and Mapping | Subsurface Utility Engineering | LiDAR

FASTER
BETTER
STRONGER

February 15, 2024

Brian Ashby, P.E.
Vice President
Kimley-Horn
200 South Orange Avenue, Suite 600
Orlando, FL 32801

Subject: **MCO Stormwater Management Program**

Dear Brian,

We appreciate your consideration of L&S Diversified, LLC to provide professional surveying services for the above referenced project. Below we have outlined a proposed schedule of services and the associated fees for this project.

SCOPE OF SERVICES

Establish Survey Control and perform hydrographic surveys on 97 Ponds and 4 Canals within the GOAA Campus. The hydrographic survey is to include a transect of each pond and canal from the intake to the outlet of each pond, and from the upstream end to downstream end of each canal. The total estimated length of transects is 150,000 feet (or 28.4 miles). See attached exhibits for additional information.

Establish Survey Control

L & S Diversified shall establish horizontal and vertical control monuments to facilitate site engineering. The monuments shall be established so that there is clear line of site between them. Horizontal coordinates shall be referenced to Florida State Plane, North American Datum of 1983 (NAD83). Elevations shall be referenced to North American Vertical Datum of 1988 (NAVD88).

Hydrographic Survey

L & S Diversified will provide all labor, equipment and resources necessary to research, locate and/or establish the required site control and perform a hydrographic survey.

Hydrographic Survey: single beam or lead line data acquisition inside the project limits as defined in the RFQ. Sufficient data will be acquired to determine the depth and topography of the near shore lake or canal bottom.

The hydrographic survey will be displayed at one foot contours and will be based on the North American Vertical Datum (NAVD) of 1988.

L & S Diversified, LLC

Principal
Sherry Lee Manor, PSM

489 SR 436, Suite 117
Casselberry, FL 32707
o 407.681.3836

www.LSsurveyor.com



FASTER
BETTER
STRONGER

The Hydrographic Survey will be prepared in accordance with the State of Florida Standards of Practice Chapter 5J-17, Florida Administrative Code, as set forth by the Board of Professional Surveyors and Mappers, pursuant to Section 472.027, Florida Statutes.

L&S Diversified will follow the guidelines for collecting field data as outlined in the US Army Corps of Engineers manual EM 1 110-2-1003 – Engineering and Design, Hydrographic Surveying. Data acquisition will conform to the horizontal and vertical precision standards as outlined in the Federal Geographic Data Committee, Geospatial Positioning Standards – PART 4: Standards for A/E/C and Facility Management (FGDC-STD-007.4-2002).

Deliverables

Survey in pdf and dwg format, signed and sealed hardcopies as required by Client are to be billed at cost.

The attached table summarizes the costs associated with this proposal. Please review this information and let us know if you have any questions.

Schedule

L & S Diversified will begin the Survey on the subject property within 10 working days after receipt of your executed Notice to Proceed (NTP). This does not apply if extensive title work is involved, extensive certification requirements are needed, or if an ALTA/ACSM Survey is required. Proposed fee and schedule shown hereon is valid for up to 45 days from the date of receipt. We prefer at least 48 hours of notice for scheduling of a field crew.

Description	Duration
Field Data Collection / Office Drafting	40 Weeks
QA/QC	4 Weeks
Estimated Delivery of Survey from Notice to Proceed	44 Weeks

Additional Services

If the client desires to change or expand upon these proposed services, an additional fee shall be negotiated. This renegotiation shall be accomplished prior to commencing the additional work, and may be necessary for any of the following services which are not a part of this contract:

Locating and/or flagging Flood Zone Line or Normal High Water Line (NHWL), tidal records, or locating '0' or specific elevations, Research and ordering additional Maps, Records or Materials necessary for completing these specified tasks; client-imposed requirements not covered herein; Additional Certifications or Affidavits not specified herein; Elevation Certifications; Wetland Delineation or Location; sub-surface Excavation or Underground Utility Location; Extensive Title Review and Plotting of Easements;

L & S Diversified, LLC

Principal
 Sherry Lee Manor, PSM

489 SR 436, Suite 117
 Casselberry, FL 32707
 o 407.681.3836

www.LSsurveyor.com



**FASTER
BETTER
STRONGER**

Offsite Surveys or Sketches; Vertical Topographic information unless outlined in this proposal; Requests by Third Parties (Buyer's Attorney, Seller's Attorney, Lender or Lender's Counsel, Real Estate Agents, Title Company Personnel, etc.) for additions, deletions or revisions to be made to the survey drawings or maps before or after initial submittal to client; Additional Meetings and Errands not covered herein which are necessary to complete these specified tasks; Client-Authorized on-site instruction given to field crew for extra field work not covered herein; Client-approved overtime; Additional ALTA Table A Items.

Reimbursables such as overnight mailings, sending electronic files, copying charges, blueprinting costs, plotting of extra drawings not covered herein, delivery, shipping, or rush charges, etc. will be billed as an Extra cost on a Time, Materials and Expense basis.

It may be necessary for the Project Manager to call the client to receive verification and authorization for Extra Costs stated above in the preceding paragraph, and may further require the client to sign an Additional Work Authorization Form for any out-of-scope requests.

All public entity or jurisdictional agency fees are to be paid directly by the client prior to obtaining approvals or permits. These fees include, but are not limited to, platting, impact, re-zoning, permitting, review and application fees. L & S Diversified has no control over the procedures of public entities or jurisdictional agencies, and therefore, cannot guarantee timing and outcome of permits and entitlements related to this site/project.

Thank you for this opportunity and we look forward to working with you on this exciting new project. Should you have any questions, please do not hesitate to call.

Sincerely,
L & S Diversified, LLC

Sherry Lee Manor
President

L & S Diversified, LLC

Principal
Sherry Lee Manor, PSM

489 SR 436, Suite 117
Casselberry, FL 32707
o 407.681.3836

www.LSsurveyor.com

Service Items 101-117									
Sr. Survey Crew Chief		Survey Crew Chief			Sr. Instrument Man				
\$97.00		\$72.00			\$62.00				
Hours	Fee	Hours	Fee	Hours	Fee	Subtotal - Hours	Subtotal - Fee		
Service Item									
101 Survey Control	272.00	\$26,384.00		\$0.00	272.00	\$16,864.00	544.00	\$43,248.00	Includes Survey Control and Project Set Up Per Group
109 Hydrographic	144.00	\$13,968.00		\$0.00	144.00	\$8,928.00	288.00	\$22,896.00	Hydrographic Survey on Canals
109 Hydrographic	930.00	\$90,210.00		\$0.00	930.00	\$57,660.00	1860.00	\$147,870.00	Hydrographic Survey on Ponds
	1346.00	\$130,562.00	0.00	\$0.00	1346.00	\$83,452.00	2692.00	\$214,014.00	

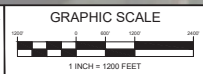
Service Items 201-220									
Principal		Sr. Project Manager			Sr. CADD Technican				
\$231.00		\$173.00			\$78.00				
Hours	Fee	Hours	Fee	Hours	Fee	Subtotal - Hours	Subtotal - Fee		
Service Item									
201 Survey Control		\$0.00	54.00	\$9,342.00	272.00	\$21,216.00	326.00	\$30,558.00	Includes Survey Control and Project Set Up Per Group
211 Hydrographic		\$0.00	16.00	\$2,768.00	78.00	\$6,084.00	94.00	\$8,852.00	Hydrographic Survey on Canals
211 Hydrographic		\$0.00	82.00	\$14,186.00	408.00	\$31,824.00	490.00	\$46,010.00	Hydrographic Survey on Ponds
	0.00	\$0.00	152.00	\$26,296.00	758.00	\$59,124.00	910.00	\$85,420.00	

Total Fee - Not To Exceed \$299,434.00



A THROUGH II, INCLUSIVE – PROPOSED POND GROUPS
 1 THROUGH 99, EXCLUDING 12, 13, 15, 52, 53 – PONDS TO BE SURVEYED
 NORTH TRADEPORT DITCH, SOUTH TRADEPORT DITCH, B-8 BYPASS CANAL, & GB CANAL – CANALS TO BE SURVEYED

MASTER STORMWATER POND RESTORATION PROGRAM
EMILEY-HORN
SURVEY PROPOSAL EXHIBIT



REVISIONS		
NO.	DATE	DESCRIPTION

PROJECT No.	
DATE	

DRAWING No. 1 OF 1

L & S Diversified

10000 W. STATE ST. SUITE 1000 COLUMBIA, MO 65203
 652-733-1100
 WWW.LANDSURVEYING.COM

Pond Group	Pond/Canal ID	Length of Transect (Feet)	Notes	Inside AOA
A	Group			
A	1	184		
A	2	85		
A	4	232		
A	5	580		
A	6	459		
A	7	170		
A	8	320		
B	Group			
B	3	1786		y
B	9	1485		y
C	Group			
C	North Tradport Ditch-Segment 1	4741	Canal	
D	Group			
D	North Tradport Ditch-Segment 2	4735	Canal	
E	Group			
E	10	3782		
E	14	479		
E	South Tradeport Ditch-Segment 1	4600	Canal	
F	Group			
F	11	99		y
G	Group			
G	50	1983		
G	51	1403		
G	South Tradeport Ditch-Segment 2	3886	Canal	
H	Group			
H	South Tradeport Ditch-Segment 3	4581	Canal	
H	54	318		
H	55	333		
H	B-8 Bypass Canal-Segment 1	3910	Canal	
I	Group			
I	56	723		
I	82	533		
I	83	309		
I	84	251		
I	85	462		
I	86	525		
I	B-8 Bypass Canal-Segment 2	1421	Canal	
J	Group			
J	B-8 Bypass Canal-Segment 3	2681	Canal	
K	Group			
K	46	2139		
K	47	913		
K	48	427		
K	49	196		
K	78	689		
K	79	1427		
L	Group			
L	42	529		
L	43	782		
L	44	516		
L	45	1096		
L	77	157		

Pond Group	Pond/Canal ID	Length of Transect (Feet)	Notes	Inside AOA
M	Group			
M	38	666		y
M	39	1248		y
M	40	729		y
M	41	1268		y
M	76	2482		y
N	Group			
N	31	814		y
N	32	744		y
N	33	746		y
N	34	154		y
N	24-Segment 1	2392		
O	Group			
O	24-Segment 2	1055		
O	27	370		y
O	28	441		y
O	29	523		y
O	30	1114		y
P	Group			
P	24-Segment 2	2611		y
P	25	332		y
P	26	360		y
Q	Group			
Q	23	725		y
Q	69	2130		y
R	Group			
R	70	1943		y
S	Group			
S	35	354		y
S	36	200		y
S	37	174		y
S	71	1218		y
T	Group			
T	72	179		y
T	73	137		y
T	74	566		y
T	75	994		y
U	Group			
U	16	489		
U	17	385		
U	18	3200		
U	19	193		
U	20	193		
U	21	621		
U	22	449		
U	B-8 Bypass Canal-Segment 4	1216	Canal	
V	Group			
V	B-8 Bypass Canal-Segment 5	4298	Canal	
V	57	581		
V	58	226		
V	59	484		
V	60	488		
V	61	592		

Pond Group	Pond/Canal ID	Length of Transect (Feet)	Notes	Inside AOA	
V	62	125			
V	63	100			
V	64	146			
V	65	81			
V	66	1094			
V	68	155			
X	Group				
X	B-8 Bypass Canal-Segment 6	2981	Canal		
X	87-Segment 1	1488			
X	Goldenrod Pond 1	227			
X	Goldenrod Pond 2	402			
X	Goldenrod Pond 3	137			
Y	Group				
Y	B-8 Bypass Canal-Segment 7	4949	Canal		
Y	67	202		y	
Z	Group				
Z	B-8 Bypass Canal-Segment 8	4955	Canal	y	
AA	Group				
AA	B-8 Bypass Canal-Segment 9	5615	Canal	y	
BB	Group				
BB	80	488		y	
BB	81	475		y	
CC	Group				
CC	88-Segment 1	2991			
DD	Group				
DD	88-Segment 2	5416			
EE	Group				
EE	87-Segment 2	5375		y	
FF	Group				
FF	GB Canal-Segment 1	8247	Canal		
GG	Group				
GG	GB Canal-Segment 2	3558	Canal		
HH	Group				
HH	89	567			
HH	90	366			
HH	91	184			
HH	92	177			
HH	93	249			
HH	94	310			
II	Group				
II	95	200			
II	96	295			
II	97	334			
II	98	1671			
II	99	570			
		150141			Total Length of Transects
		66374			Subtotal Canals
		83767			Subtotal Ponds

TRUTH IN NEGOTIATION CERTIFICATION
MCO Master Stormwater Management Program

The Consultant hereby certifies, covenants, and warrants that wage rates and other factual unit costs supporting the compensation for this project's agreement are accurate, complete, and current at the time of contracting.

The Consultant further agrees that the original agreement price and any additions thereto shall be adjusted to exclude any significant sums by which the Greater Orlando Aviation Authority determines the agreement price was increased due to inaccurate, incomplete, or noncurrent wage rates and other factual unit costs. All such agreement adjustments shall be made within one (1) year following the end of the contract. For purposes of this certificate, the end of the agreement shall be deemed to be the date of final billing or acceptance of the work by the Greater Orlando Aviation Authority, whichever is later.

Consultant: Kimley-Horn and Associates, Inc.

By: 

Print Name: Jonathan A. Martin

Date: February 28, 2024

ATTACHMENT A

FINANCE FORM

Date:	<u>2/13/2024</u>	CCM / PC:	<u>CCM</u>
Requestor's Name:	<u>Keegan O'Brien</u>	Requestor's Extension:	<u>3555</u>
Form Preparer's Name:	<u>Keegan O'Brien</u>	Preparer's Extension:	<u>3555</u>
Requestor's Department:	<u>Planning and Environmental</u>	Purchasing Solicitation #:	<u>N/A</u>
Description:	<u>Stormwater Management Program Development</u>	Committee Date:	<u>3/12/2024</u>
Vendor:	<u>Kimley-Horn & Associates</u>	Committee Agenda Item #:	<u></u>

NON-PROJECT FUNDS: O&M, CAPEX, OEA REVENUE FUNDS

Account Code Format: xxx.xxx.xxx.xxxxxxx.xxx.xxxxxx	FY 24 Amount	FY25 Amount	FY26 Amount	FY27 Amount	FY28 Amount	TOTAL CONTRACT
301.631.170.5460002.000.000000						
Total Requisition:	\$621,366.00					
Requisition Number:	96429					
Funding Approver: <u>Andrea Harper</u>						
OMB Notes:						

Number	Preparer	Description	Approval Sta	Creation Date	Total	Currency	Reserved
96429	Wages, Alice M	FY24 3/12/24 Master \$	In Process	05-MAR-2024 15:52:02	621,366.00	USD	<input checked="" type="checkbox"/>

MEMORANDUM

TO: Members of the Construction Committee

FROM: Edelis Molina, Manager Small Business Programs

DATE: March 12, 2024

RE: Request for Approval of an Addendum to the Continuing Civil Engineering Services Agreement with Kimley-Horn and Associates, Inc. to provide Stormwater Management Program Development, for W-00507-MCO Stormwater Maintenance and Program Development at Orlando International Airport

We have reviewed the qualifications of the subject contract's MWBE/LDB/VBE specifications and have determined that Kimley-Horn and Associates, Inc. proposes 48.2% MWBE participation on this addendum.

Our analysis indicates that Kimley-Horn and Associates, Inc. is eligible for award of the subject addendum.

MWBE UTILIZATION FORM FOR NON-FEDERALLY FUNDED PROJECTS
PLEASE COMPLETE THIS FORM

This form should be used to report Construction and Engineering /Professional Services activities.

Name of Airport: Orlando International Airport

Telephone No: (407) 825-7179

Address: One Jeff Fuqua Boulevard, Orlando, FL 32827

Project Name & Number: Request for Approval of an Addendum to the Continuing Civil Engineering Services Agreement with Kimley-Horn and Associates, Inc. to provide Stormwater Management Program Development, for W-00507-MCO Stormwater Maintenance and Program Development at Orlando International Airport

1. Construction Information:

Addendum Amount: _____

2. MWBE Goal by Group Representation:

Asian Pacific American	_____	Actual Result	_____
Asian Subcontinent American	_____	Actual Result	_____
Black American	_____	Actual Result	_____
Caucasian Female American	_____	Actual Result	_____
Hispanic American	_____	Actual Result	_____
Native American	_____	Actual Result	_____
Other	_____	Actual Result	_____
Total MWBE Participation	_____ - _____	Actual Result	_____

3.a. Prime Contractor Information:

Name: _____
 Address: _____
 City, State, Zip: _____
 Telephone: _____

3.b. Name and Address of MWBE Subcontractor

Name: _____
 Address: _____
 City, State, Zip: _____
 Telephone: _____

3.c. *Identity:

Work Item(s): _____
 Amount of Subcontract _____
 Percent of Prime Contract (%): _____

4. Engineering/Professional Services Information:

Addendum Amount: \$621,366.00

5. MWBE Goal by Group Representation:

Asian Pacific American	<u>299,434.00</u>	Actual Result	<u>48.2%</u>
Asian Subcontinent American	<u>-</u>	Actual Result	<u>0.0%</u>
Black American	<u>-</u>	Actual Result	<u>0.0%</u>
Caucasian Female American	<u>-</u>	Actual Result	<u>0.0%</u>
Hispanic American	<u>-</u>	Actual Result	<u>0.0%</u>
Native American	<u>-</u>	Actual Result	<u>0.0%</u>
Other	<u>-</u>	Actual Result	<u>0.0%</u>
Total MWBE Participation	<u>299,434.00</u>	Actual Result	<u>48.2%</u>

6.b. Engineering / Professional Service Firm Information:

Name: Kimley-Horn and Associates, Inc.
 Address: 189 South Orange Avenue, Suite 1000
 City, State, Zip: Orlando, FL 32801
 Telephone: (407) 898-1511

6.b. Name and Address of MWBE Subconsultant

Name: L & S Diversified, LLC
 Address: 489 FL-436 Suite 117
 City, State, Zip: Casselberry, FL 32730
 Telephone: 407-681-3836

6.c. *Identity:

Work Item(s): Surveying Services
 Amount of Subcontract \$299,434.00
 Percent of Prime Contract (%): 48.2%

* In Items 3.c. and 6.c. above specify the identity of MWBE Subcontractors and E/PS Firms (e.g. Black American, Hispanic American, Asian Subcontinent American, Asian Pacific American, Caucasian Female American, Native American & Other)



MEMORANDUM

TO: Members of the Aviation Authority

FROM: Scott Shedek, Chair, Construction Committee

DATE: March 27, 2024

ITEM DESCRIPTION

Recommendation of the Construction Committee to Approve an Addendum to the Continuing Civil Engineering Services Agreement with Kimley-Horn and Associates, Inc. for Stormwater Management Program Development for Project W-00507, Stormwater Maintenance and Program Development, at the Orlando International Airport (MCO)

BACKGROUND

On March 15, 2023, the Aviation Authority Board approved Continuing Civil Engineering Services Agreements with the following firms, following a competitive award process in compliance with state statutes and Aviation Authority policies:

- AECOM Technical Services, Inc.
- Atkins North America, Inc.
- Avcon Inc. (*MWBE*)
- C&S Engineers, Inc.
- Kimley-Horn and Associates, Inc.
- Mead & Hunt, Inc.

The agreements are structured as a no-cost base agreement with negotiated hourly rates. Services that are within the advertised scope are negotiated on an as-needed or annual basis, and awarded as addenda to the base agreement. The terms of these agreements shall be for a period of five years.

Services consist of continuing civil engineering services and related professional services, including but not limited to, civil, traffic, environmental, structural evaluation and design; landscape and irrigation design; utilities and infrastructure design; airfield design; roadway and signage design; surveying; cost estimating; scheduling; geotechnical services; stormwater management consulting and design services; and all other related services including coordination with the Aviation Authority, its Consultants, the City of Orlando and all agencies having jurisdiction over the facilities such as the Federal Aviation Administration, the Transportation Security Administration, the Florida Department of Transportation, and the Orlando Utilities Commission.

The Services may also include studies and preparation of reports involving scope definition and validation of projects, analysis of design parameters, budget development, evaluation and documentation of existing conditions; design, bid/procurement and award, design/build, design criteria package development, permitting, construction administration, resident engineering, master document support, technical support and review of documents prepared by others, design management support on various Aviation Authority projects and all other engineering and related professional services.

ISSUES

W-00507 will develop and implement a stormwater maintenance program at MCO. Services will include scheduling/developing a stormwater maintenance schedule, designing repairs, surveying ponds for future maintenance, repairing structures/conducting dredging and regrading ponds to meet new/previous design standards. This effort consists of the planning and development of a master stormwater management program for the ponds and canals within the MCO campus. Restoration includes removing settled material from the bottom of ponds to achieve conditions as were originally permitted, erosion control, maintenance of traffic, hauling, and disposal of all excavated material at a disposal site approved by the Aviation Authority, as well as rehabilitation of failed drainage structures and pond slopes and associated features.

A fee has been negotiated with Kimley-Horn and Associates, Inc. for a total amount of \$621,366, to provide stormwater management program development for all dry and wet ponds at MCO. Services include developing a set of standard drawings and specifications that will be used as the basis for the scheduled restoration of each pond and canal. The Management Program will include a single transect survey of each pond and canal, utilizing sounding technology, which will provide a cross-section of the existing conditions within each pond and canal, drainage structures from the Aviation Authority master drainage atlas associated with the waterbodies, permitted conditions, and an estimated quantity of material to be excavated, drainage structures to be repaired, and sedimentation to be removed from interconnected culverts. The Management Program will also include a restoration schedule along with an associated Opinion of Probable Cost for each pond and canal in the Program. It is anticipated that services will be required for approximately fifteen months.

On March 12, 2024, the Construction Committee recommended the approval of an Addendum to the Continuing Civil Engineering Services Agreement with Kimley-Horn and Associates, Inc. for Stormwater Management Program Development for W-00507, Stormwater Maintenance and Program Development, at MCO.

SMALL BUSINESS

The Aviation Authority has reviewed the proposal from Kimley-Horn and Associates, Inc., and determined that Kimley-Horn and Associates, Inc. proposes 48.2% Minority and Women Business Enterprise (MWBE) participation on this Addendum and certifies that Kimley-Horn and Associates, Inc. is in good standing as it relates to its small business participation.

ALTERNATIVES

None.

FISCAL IMPACT

The fiscal impact is \$621,366. Funding is from Operations and Maintenance Funds. Funding required in current and subsequent fiscal years will be allocated from the Operations and Maintenance Funds, as approved through the budget process and when funds become available.

RECOMMENDED ACTION

It is respectfully requested that the Aviation Authority Board resolve to accept the recommendation of the Construction Committee and approve an Addendum to the Continuing Civil Engineering Services Agreement with Kimley-Horn and Associates, Inc. for Stormwater Management Program Development for W-00507, Stormwater Maintenance and Program Development, at MCO, for the total not-to-exceed fees amount of \$621,366, with funding from Operations and Maintenance Funds; and, authorize an Aviation Authority Officer or the Chief Executive Officer to execute the necessary documents following satisfactory review by legal counsel.