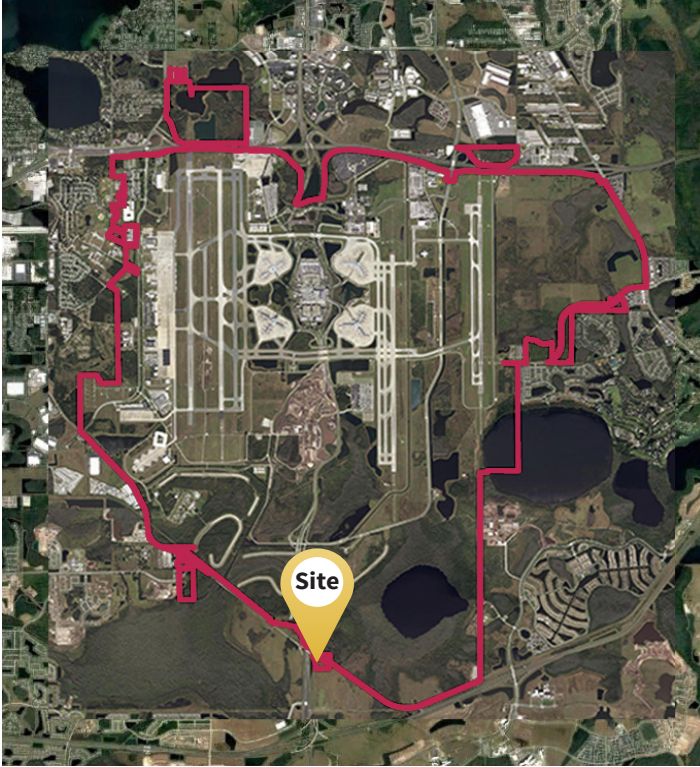


# Parcel Data Sheet

Parcel SE02



## GOAA Contact Information

**Telephone:** +1(407) 423-9018  
**Email:** [propertyinformation@goaa.org](mailto:propertyinformation@goaa.org)  
**Website:** [orlandoairports.net/destinationmco](http://orlandoairports.net/destinationmco)

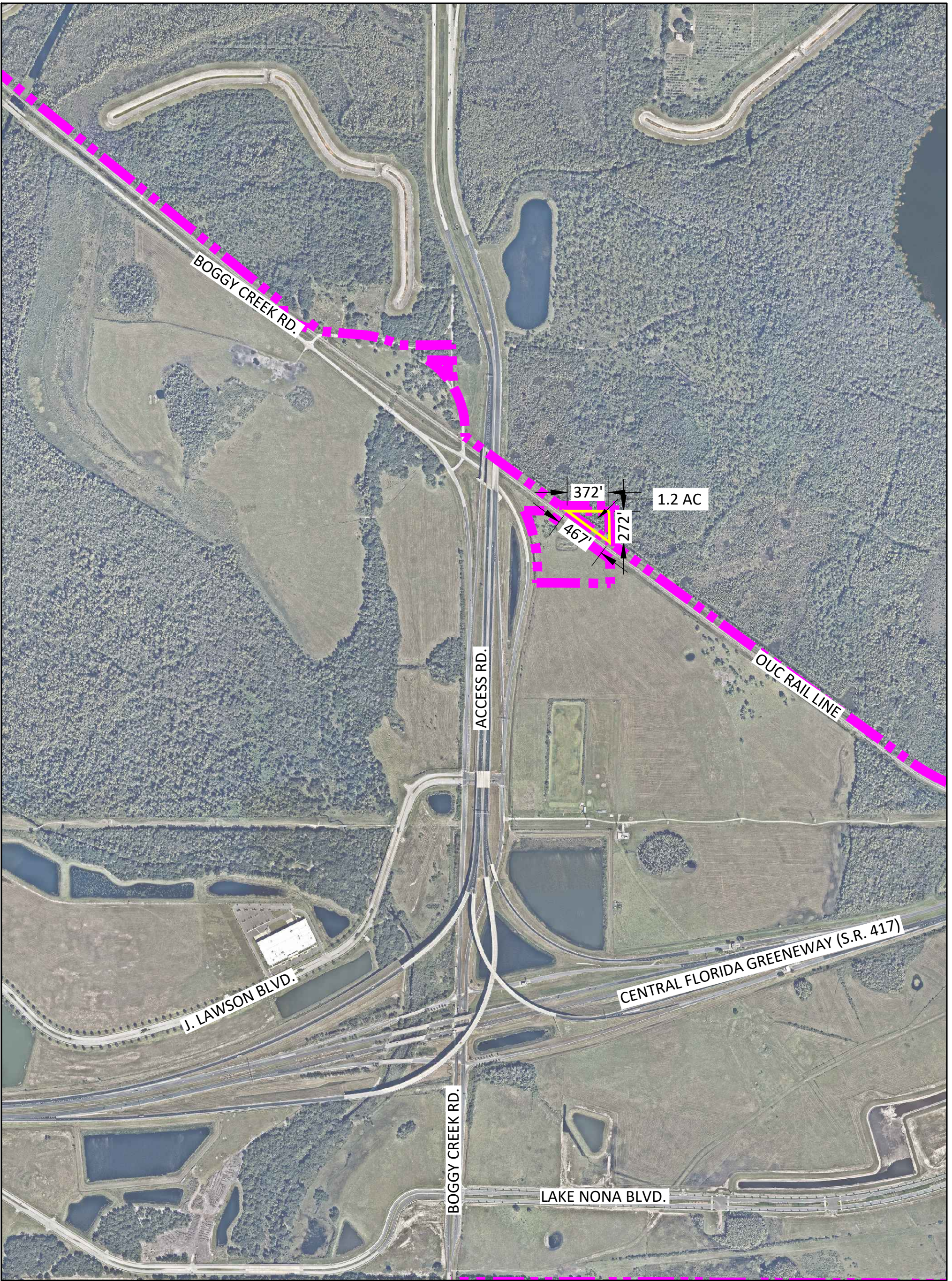
## Utility Providers

**Electric:** OUC  
+1(407) 423-9018  
**Natural Gas:** TECO  
+1(407) 425-4662  
**Water:** OUC  
+1(407) 894-9831  
**Sewer:** City of Orlando  
+1(407) 246-2266

## Site Attributes

<b>Acreage:</b>	1	<b>Electric:</b>	No
<b>Hectares:</b>	0.5	<b>Natural Gas:</b>	No
<b>Latitude:</b>	28.3815719	<b>Water:</b>	No
<b>Longitude:</b>	-81.30584236	<b>Sewer:</b>	No
<b>City:</b>	Orlando	<b>Telecommunications:</b>	No
<b>County:</b>	Orange	<b>Airfield Access:</b>	No
<b>GOAA Land Use:</b>	Non-Aviation Commercial	<b>Soil Type:</b>	Smyrna Fine Sand
<b>GOAA Development Zone:</b>	Southeast		
<b>City of Orlando Zoning:</b>	Metropolitan Activity Center		
<b>City of Orlando Land Use:</b>	Metropolitan Activity Center		
<b>Adjacent Road:</b>	None		
<b>Proximity to Highway:</b>	SR 417 (1 Mile), SR 528 (7 Miles), I-4 (15 Miles), I-95 (35 Miles), I-75 (63 Miles)		
<b>Fire Department on Site:</b>	City of Orlando Fire Department		
<b>Police Department on Site:</b>	Orlando Police Department		





# Parcel Map

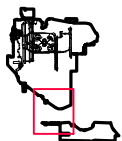
## Parcel SE02



### DISCLAIMER

This map and the data contained herein are provided for informational purposes only and should not be relied upon for any purpose. Any reliance on the information contained herein is at the user's own risk.

### LOCATION



### LEGEND

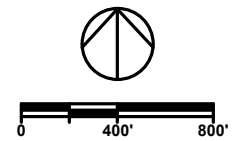
- ▬ Parcel Boundary
- ▬ Airport Property Boundary

Aerial Date: November 2016

### REVISION HISTORY

Date Created: 12/31/17

### GRAPHIC SCALE



### CONTACT INFORMATION

Tel: +1(407) 423-9018  
 Email: [propertyinformation@goaa.org](mailto:propertyinformation@goaa.org)  
 Web: [orlandoairports.net/destinationmco](http://orlandoairports.net/destinationmco)