

# Parcel Data Sheet

Parcel NTS22



## GOAA Contact Information

**Telephone:** +1(407) 423-9018  
**Email:** [propertyinformation@goaa.org](mailto:propertyinformation@goaa.org)  
**Website:** [orlandoairports.net/destinationmco](http://orlandoairports.net/destinationmco)

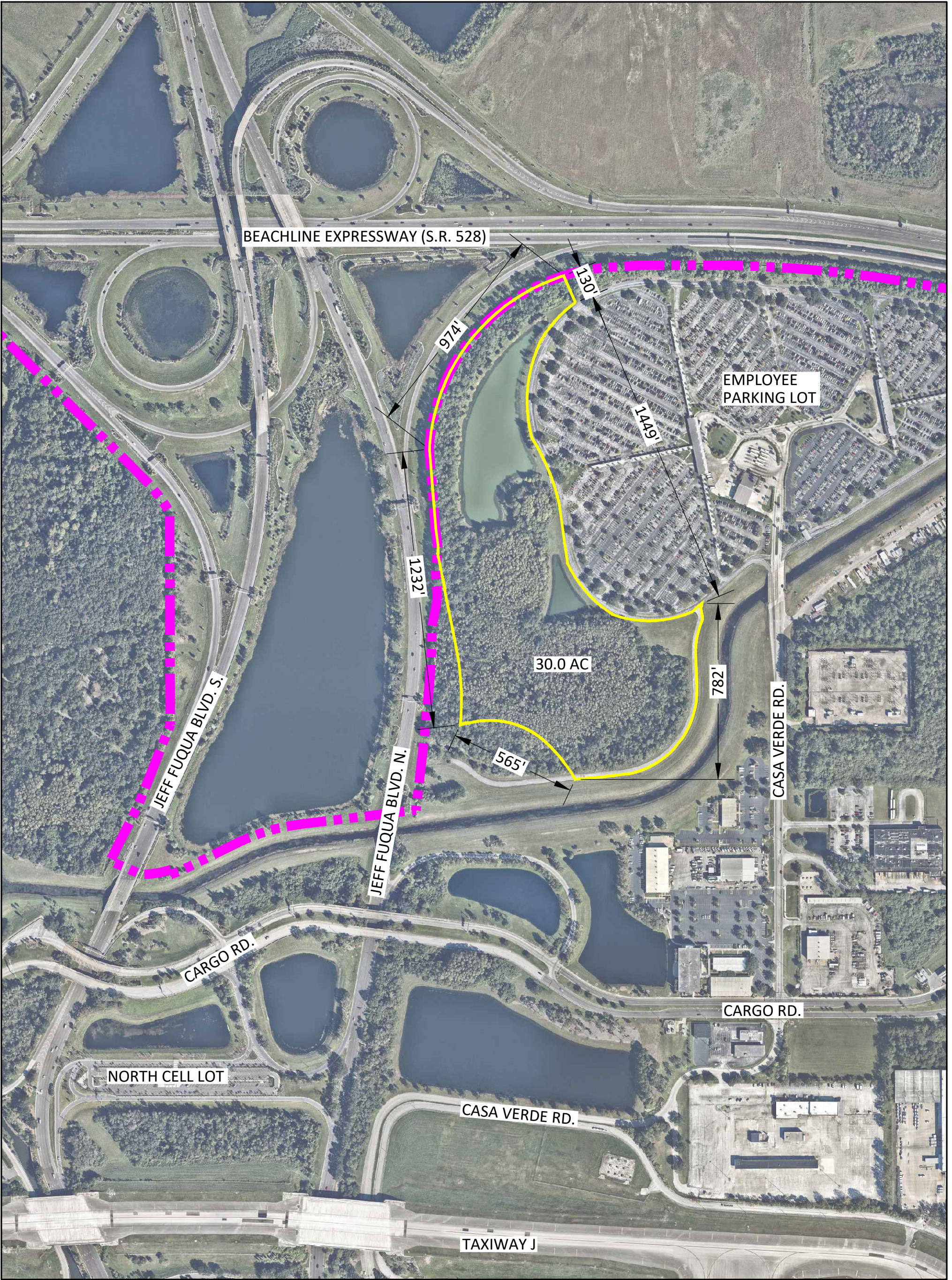
## Utility Providers

**Electric:** OUC  
+1(407) 423-9018  
**Natural Gas:** TECO  
+1(407) 425-4662  
**Water:** OUC  
+1(407) 894-9831  
**Sewer:** City of Orlando  
+1(407) 246-2266

## Site Attributes

<b>Acreage:</b>	30	<b>Police Department on Site:</b>	Orlando Police Department
<b>Hectares:</b>	12	<b>Electric:</b>	Yes
<b>Latitude:</b>	28.44727774	<b>Natural Gas:</b>	Yes
<b>Longitude:</b>	-81.30484365	<b>Water:</b>	Yes
<b>City:</b>	Orlando	<b>Sewer:</b>	No
<b>County:</b>	Orange	<b>Telecommunications:</b>	No
<b>GOAA Land Use:</b>	Ground Transportation	<b>Airfield Access:</b>	No
<b>GOAA Development Zone:</b>	North Terminal Support	<b>Soil Type:</b>	Smyrna Fine Sand, Samsula-Hontoon-Basinger Association, Sanibel Muck, Basinger Fine Sand
<b>City of Orlando Zoning:</b>	Metropolitan Activity Center & Conservation		
<b>City of Orlando Land Use:</b>	Metropolitan Activity Center & Conservation		
<b>Adjacent Road:</b>	Casa Verde Road		
<b>Proximity to Highway:</b>	SR 528 (1 Mile), SR 417 (5 Miles), I-4 (12 Miles), I-95 (32 Miles), I-75 (60 Miles)		
<b>Fire Department on Site:</b>	ARFF East		





# Parcel Map

Parcel NTS22



**DISCLAIMER**

This map and the data contained herein are provided for informational purposes only and should not be relied upon for any purpose. Any reliance on the information contained herein is at the user's own risk.

**LOCATION**



**LEGEND**

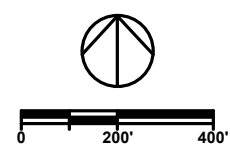
- Parcel Boundary
- - - Airport Property Boundary

Aerial Date: November 2016

**REVISION HISTORY**

Date Created: 12/31/17

**GRAPHIC SCALE**



**CONTACT INFORMATION**

Tel: +1(407) 423-9018  
 Email: [propertyinformation@goaa.org](mailto:propertyinformation@goaa.org)  
 Web: [orlandoairports.net/destinationmco](http://orlandoairports.net/destinationmco)