

# Parcel Data Sheet

Parcel HZ02



## GOAA Contact Information

**Telephone:** +1(407) 423-9018  
**Email:** [propertyinformation@goaa.org](mailto:propertyinformation@goaa.org)  
**Website:** [orlandoairports.net/destinationmco](http://orlandoairports.net/destinationmco)

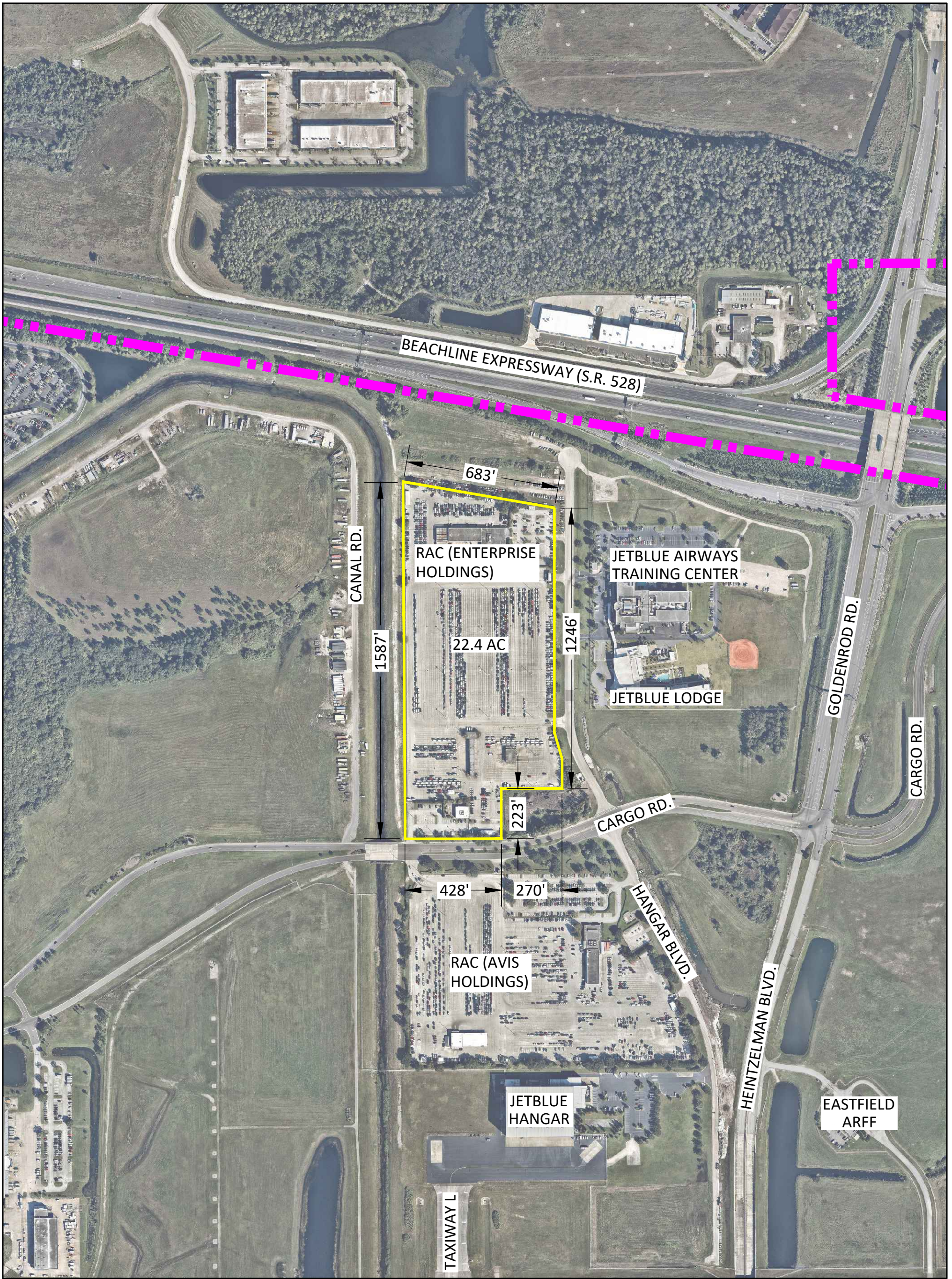
## Utility Providers

**Electric:** OUC  
+1(407) 423-9018  
**Natural Gas:** TECO  
+1(407) 425-4662  
**Water:** OUC  
+1(407) 894-9831  
**Sewer:** City of Orlando  
+1(407) 246-2266

## Site Attributes

<b>Acreage:</b>	22	<b>Electric:</b>	Yes
<b>Hectares:</b>	9	<b>Natural Gas:</b>	No
<b>Latitude:</b>	28.44661755	<b>Water:</b>	Yes
<b>Longitude:</b>	-81.29231706	<b>Sewer:</b>	Yes
<b>City:</b>	Orlando	<b>Telecommunications:</b>	Yes
<b>County:</b>	Orange	<b>Airfield Access:</b>	No
<b>GOAA Land Use:</b>	Non-Aviation Commercial	<b>Soil Type:</b>	Smyrna Fine Sand, Ona Fine Sand
<b>GOAA Development Zone:</b>	Heintzelman		
<b>City of Orlando Zoning:</b>	Metropolitan Activity Center		
<b>City of Orlando Land Use:</b>	Metropolitan Activity Center		
<b>Adjacent Road:</b>	Cargo Road, Hangar Boulevard		
<b>Proximity to Highway:</b>	SR 528 (1 Mile), SR 417 (4 Miles), I-4 (12 Miles), I-95 (30 Miles), I-75 (61 Miles)		
<b>Fire Department on Site:</b>	ARFF East		
<b>Police Department on Site:</b>	Orlando Police Department		





# Parcel Map

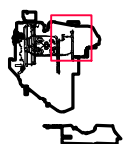
Parcel HZ02



**DISCLAIMER**

This map and the data contained herein are provided for informational purposes only and should not be relied upon for any purpose. Any reliance on the information contained herein is at the user's own risk.

**LOCATION**



**LEGEND**

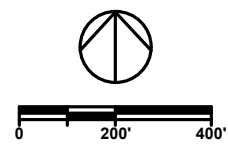
- ▬ Parcel Boundary
- ▬ Airport Property Boundary

Aerial Date: November 2016

**REVISION HISTORY**

Date Created: 12/31/17

**GRAPHIC SCALE**



**CONTACT INFORMATION**

Tel: +1(407) 423-9018  
 Email: [propertyinformation@goaa.org](mailto:propertyinformation@goaa.org)  
 Web: [orlandoairports.net/destinationmco](http://orlandoairports.net/destinationmco)