

**ADDENDUM NO. 1
TO THE AGREEMENT DATED FEBRUARY 2, 2022
BETWEEN GREATER ORLANDO AVIATION AUTHORITY
AND C&S ENGINEERS, INC.**

Project: Design Phase Services for BP-00049, ORL Taxiways A, B and E4 Rehabilitation, Orlando Executive Airport

THIS ADDENDUM is effective this 1st day of August, 2022, by and between the **GREATER ORLANDO AVIATION AUTHORITY** ("Authority"), and **C&S ENGINEERS, INC.** ("Consultant").

WITNESSETH:

WHEREAS, by Agreement dated February 2, 2022, Authority and Consultant entered into an agreement for Consultant to provide Design Services for ORL East Ramp Rehabilitation - Phases 1, 2, and 3 and Taxiways A, B, and E4 Rehabilitation consulting services; and

WHEREAS, under the Agreement, Consultant agreed to perform such additional services for the Authority as are contained in any additional scope of work established by the Authority in any addendum to the Agreement and accepted in writing by the Consultant; and

WHEREAS, the Authority and the Consultant desire to enter into this Addendum to the Agreement to provide for additional services to be rendered by the Consultant under the terms of said Agreement.

NOW, THEREFORE, in consideration of the premises and the mutual covenants herein contained, the Authority and the Consultant do hereby agree as follows:

1. Consultant shall perform additional services in accordance with the terms of the Agreement and the attached Exhibit "A." Consultant shall be paid for such additional services according to the payment terms set forth in the Agreement.

2. Consultant shall be compensated for such additional services in the **LUMP SUM AND NOT TO EXCEED** amount of **TWO HUNDRED EIGHTY-NINE THOUSAND NINE HUNDRED NINETY-SEVEN AND NO/100 DOLLARS (\$289,997.00)**, broken down as follows:

Professional Fees:	NTE:	\$50,142.00
Professional Fees:	LS:	\$229,477.00
Reimbursable Expenses:	NTE:	<u>\$10,378.00</u>
Total:		\$289,997.00

3. A. Consultant hereby certifies that it is not on the Scrutinized Companies that Boycott Israel List and is not engaged in a boycott of Israel, as defined in Florida Statutes § 287.135, as amended;

AND

B. (applicable to agreements that may be \$1,000,000 or more) - Consultant hereby certifies that it is: (1) not on the Scrutinized Companies with Activities in Sudan List or the Scrutinized Companies with Activities in the Iran Petroleum Energy Sector List as defined in Florida Statutes § 287.135; and (2) not engaged in business operations in Cuba or Syria, as defined in Florida Statutes § 287.135, as amended.

4. Authority may terminate the Agreement for cause and without the opportunity to cure if the Consultant is found to have submitted a false certification or has been placed on the Scrutinized Companies that Boycott Israel List or is engaged in a boycott of Israel.

In the event the Agreement is for One Million Dollars (\$1,000,000.00) or more, Authority may terminate this Agreement for cause and without the opportunity to cure if the Consultant is found to have submitted a false certification or has been placed on the Scrutinized Companies with Activities in Sudan List or the Scrutinized Companies with Activities in the Iran Petroleum Energy Sector List or is engaged in business operations in Cuba or Syria.

5. Except as expressly modified in this Addendum, the Agreement dated February 2, 2022 and all prior addenda will remain in full force and effect.

IN WITNESS WHEREOF, the parties hereto by their duly authorized representatives, have executed this Addendum this 26 day of July, 2022.

Greater Orlando Aviation Authority

By: Kellen M. Shannon, CFB
for Kevin J. Thibault, P.E.
Chief Executive Officer

Approved as to Form and Legality
(for the benefit of GOAA only)

this 26 day of July, 2022

By: [Signature]
NELSON MULLINS BROAD AND
CASSEL, Legal Counsel
Greater Orlando Aviation Authority

C&S Engineers, Inc.

By: [Signature]
Signature (Duly Authorized Rep.)
Brian Clark
Printed Name
Senior Vice President
Title

Alba Bueno

From: Anna Farmer
Sent: Wednesday, July 20, 2022 11:17 AM
To: Directors and Aides
Cc: Elliot Martinez Fraticelli; James Knusalla; Cheri Baxter
Subject: Designee for Chief Executive Officer

Please be advised that Mr. Kevin Thibault, Chief Executive Officer, will be out of the office Wednesday, July 20, 2022 thru Sunday, July 31, 2022. Mr. Tom Draper, Chief of Operations, will be his designee Wednesday, July 20th – Saturday, July 23rd. Mr. Draper can be reached at tdraper@goaa.org or (407) 825-3021.

Ms. Kathleen Sharman, Chief Financial Officer, will be his designee Sunday, July 24th – Sunday, July 31st. Ms. Sharman can be reached at kathleen.sharman@goaa.org or 407-825-2043.

Please continue to use the signature process in place. Thank you.

Anna Farmer
Manager, Board Services
One Jeff Fuqua Boulevard
Orlando, FL 32827
Phone: 407-825-2032
Email: anna.farmer@goaa.org
Website: www.orlandoairports.net



Orlando International Airport
One Jeff Fuqua Boulevard
Orlando, Florida, 32827-4392
(407) 825-2001

Memorandum

To: Members of the Construction Committee

**From: Tuan Nguyen, Manager of Engineering
(prepared by Rita Watson/SchenkelShultz)**

Date: March 29, 2022

Re: Request for Recommendation of Approval of an Addendum to the Professional Services Agreement with C&S Engineers, Inc. for Design Phase Services for BP-00049, ORL Taxiways A, B and E4 Rehabilitation Orlando Executive Airport

Consultant's proposal, dated March 11, 2022, is to provide Design Phase Services. The Design Services and Deliverables generally include, but are not limited to the following: project surveys, geotechnical investigations, pavement condition evaluation, geometry design modifications, design and preparation of bid documents (60%, 90% & 100%), permitting documents, engineer's report, construction safety and phasing plan, project schedule and construction cost estimates. See Consultant's proposal for a detailed Scope of Work and Design Services description.

Contingent upon receiving a grant from the FAA, and subsequently, approval from the Aviation Authority Board and the City of Orlando, these services would be effective.

Consultant shall, with each monthly invoice, certify that the assigned work and services are on schedule to be completed within the contracted lump sum price, or provide at time of certification a written notice to the Aviation Authority of any deviations.

The DBE participation has been reviewed by the Office of Small Business Development. Their findings and recommendation are attached.

Funding will be from future Federal Aviation Authority and Florida Department of Transportation grants to the extent eligible and previously approved ORL Revenue Funds. Funding source verified by Hinds of Construction Finance on 03/23/22 as correct and available.

It is respectfully requested that the Construction Committee recommend to the Aviation Authority Board approval of an Addendum to the Professional Services Agreement with C&S Engineers, Inc. for the services contained herein and amount as shown below:

Not to Exceed Fees	\$50,142.00
Lump Sum Fees	\$229,477.00
Not to Exceed Expenses	\$10,378.00
TOTAL	\$289,997.00
AAC – Compliance Review Date	<i>JSS</i> 3/22/22
AAC – Funding Eligibility Review Date	3/22/22



SENT VIA EMAIL ONLY

March 21, 2022

Tuan Nguyen, P.E., TNguyen@goaa.org
Manager of Engineering
Greater Orlando Aviation Authority
Engineering and Construction
11312 Terminal C Service Road
Orlando International Airport
Orlando, FL 32824

Re: Orlando Executive Airport
BP-049, ORL Taxiways A, B and E4 Rehabilitation
Design Phase Services

C&S File: L94.MKT.PRO

Dear Mr. Nguyen:

C&S Companies appreciates the opportunity to submit the updated C-Tables for the above referenced project. Enclosed for your review and approval are the following documents:

- Design Phase
 - Updated C-Tables based on comments provided via email on March 18, 2022, dated March 21, 2022

If you have any questions or need additional information, please do not hesitate to contact me.

Very truly yours,

C&S ENGINEERS, INC.

Douglas R. Saunders, P.E., dsaunders@cscos.com
Department Manager

cc: Rita Watson, AIA, rwatson@goaa.org



11450 W. Colonial Blvd., Suite 1000, Orlando, FL 32817



407.226.1100



info@cscos.com



www.cscos.com

11450 W. Colonial Blvd., Suite 1000, Orlando, FL 32817

© 2022 C&S Companies, Inc.

TRUTH IN NEGOTIATION CERTIFICATION

The Consultant hereby certifies, covenants, and warrants that wage rates and other factual unit costs supporting the compensation for this project's agreement are accurate, complete, and current at the time of contracting.

The Consultant further agrees that the original agreement price and any additions thereto shall be adjusted to exclude any significant sums by which the Greater Orlando Aviation Authority determines the agreement price was increased due to inaccurate, incomplete, or noncurrent wage rates and other factual unit costs. All such agreement adjustments shall be made within one (1) year following the end of the contract. For purposes of this certificate, the end of the agreement shall be deemed to be the date of final billing or acceptance of the work by the Greater Orlando Aviation Authority, whichever is later.

Consultant: C&S Engineers, Inc.

By: 

Print Name: Douglas R. Saunders, P.E.

Date: March 3, 2022

SCOPE OF WORK
BP-049, ORL Taxiways A, B and E4 Rehabilitation
03-11-2022

Sponsor: Greater Orlando Aviation Authority
Airport Name: Orlando Executive Airport
Services Provided: Design

Project Description:

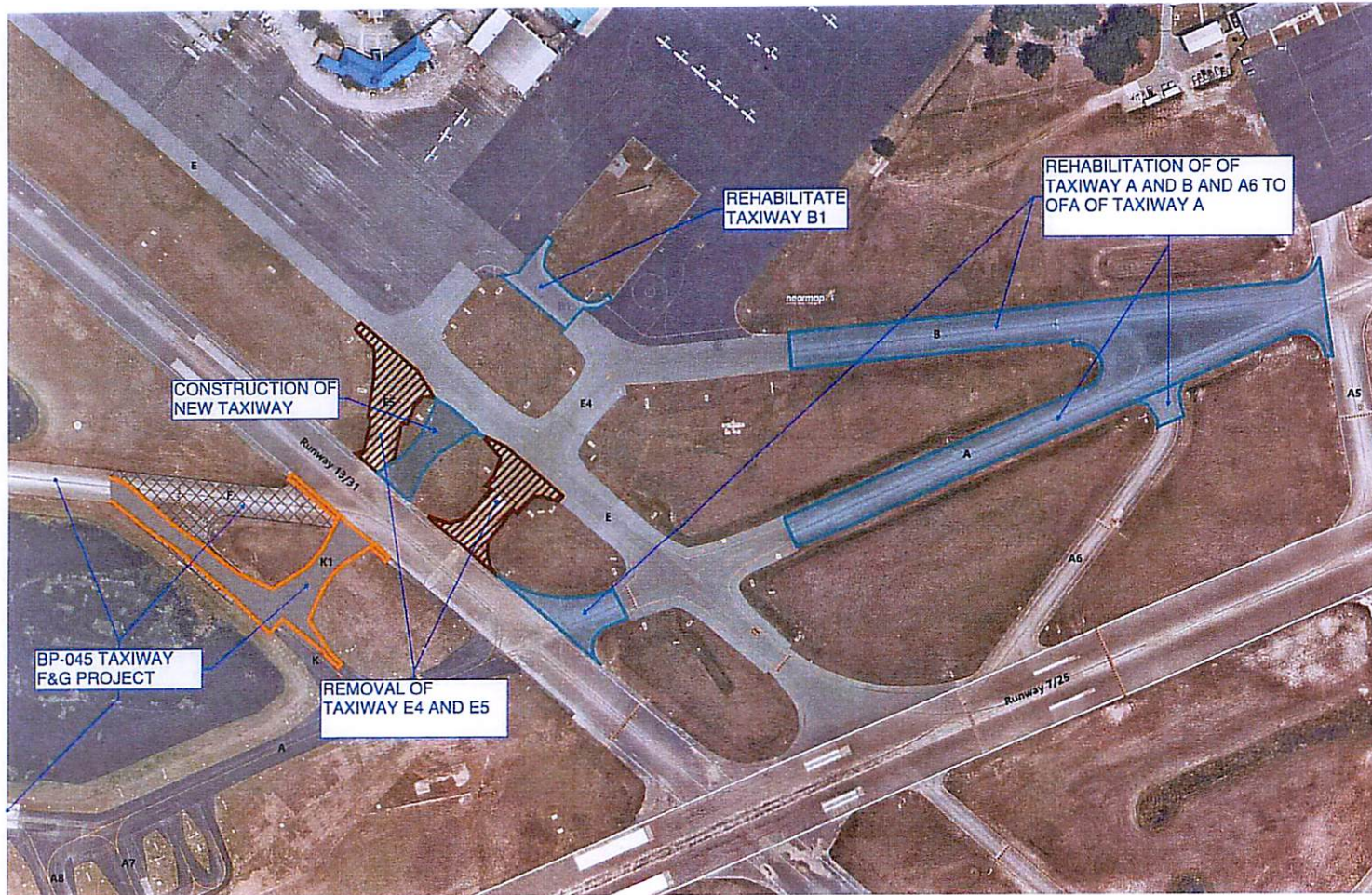
The CONSULTANT shall provide required services to design the BP-049, ORL Taxiways A, B and E4 Rehabilitation project (the "Project"). The Project will be performed and constructed by GOAA with grant assistance from the Federal Aviation Administration (FAA) Airport Improvement Program (AIP) and the Florida Department of Transportation (FDOT).

The project entails the following (see the scope of work plan on the next page):

- Removal of Taxiway E5 (approximately 235 feet long x 75 feet wide) and Taxiway E4 (approximately 205 feet long x 60 feet wide) to comply with the current FAA geometric standards required for runway incursion mitigation as identified in the FAA approved ALP.
- Rehabilitation of existing Taxiway A between Runway 13-31 and Taxiway E (approximately 135 feet long x 50 feet wide) and between Taxiway E and Taxiway A5 (approximately 1,175 feet long x 50 feet long) as identified in the 2019 FDOT Airfield Pavement Management Program report.
- Rehabilitation of existing Taxiway B between Taxiway E5 and Taxiway A5 (approximately 1,100 feet long x 50 feet long) as identified in the 2019 FDOT Airfield Pavement Management Program report.
- Construction of Taxiway E4 (approximately 200 feet long x 50 feet long, between Runway 13-31 and its parallel Taxiway E for complying with the current FAA geometric standards that are required for runway incursion mitigation as identified in the FAA approved airport layout plan.
- Rehabilitation of Taxiway B1.
- Ancillary items such as drainage, airfield electrical and markings shall be updated as well.

Also, it is anticipated that this project will be bid as one bid package.

SCOPE OF WORK
BP-049, ORL Taxiways A, B and E4 Rehabilitation
03-11-2022



Scope of Work Plan

SCOPE OF WORK
BP-049, ORL Taxiways A, B and E4 Rehabilitation
03-11-2022

Services to be provided by the CONSULTANT shall include civil, electrical, structural, and geotechnical engineering services, as applicable, required to accomplish the following items ("Basic Services"):

Assumptions used in preparation of this proposal are included on the last page.

The design schedule is anticipated to be as follows but will be adjusted to follow GOAA and FAA requirements:

Date	Task Summary
4/11/2022	Submit Grant Application
8/15/2022	Receive and Execute FAA Grant
9/21/2022	Board Approval of Negotiated Fee
10/21/2022	Complete Agreement Execution and Design NTP
November 2022	Submit 60% Design Plans and Specifications, and Eng. Report for TRT Review
November 2022	60% TRT Review Meeting / FAA Pre-Design Conference
February 2023	CSPP and Airspace Coordination in OE/AAA
January 2023	Submit 90% Design Plans and Specifications, and Eng. Report for TRT Review
January 2023	90% TRT Review Meeting
February 2023	Completion of Plans and Specifications, and Eng. Report
February 2023	Submit Plans, Engineer Report, CSPPP and Specs to FAA and FDOT
February 2023	Bid Documents Available
April 2023	Application Submittal for Construction Phase Grant to FAA

DESIGN DEVELOPMENT PHASE (60%)

The specific services to be provided or furnished for this Phase of the Project are the following:

1. Perform project management duties such as project planning, invoice preparation, schedule coordination and coordination of design team.
2. Provide to GOAA monthly project status reports.
3. Schedule coordination - consultant shall provide continued coordination so that project schedules are met for each phase of work included in this contract. Particular phases of design may be delayed by the FAA and FDOT review process.
4. The construction budget for this project is \$3.125 million for a base bid project. Add alternates may be added to this project. The Consultant shall advise GOAA as to options available for reducing construction costs to stay within the construction budget.

SCOPE OF WORK
BP-049, ORL Taxiways A, B and E4 Rehabilitation
03-11-2022

5. Schedule and conduct a pre-design meeting with GOAA to review the scope of services and become familiar with the Project requirements and operational concerns during the Project's construction.
6. Develop a communication plan for all formal and informal communication for project duration.
7. Acquire and review record documents (such as plans, specifications, reports, and studies) to become familiar with data that is available for the Project.
8. Perform a preliminary Project site inspection to further familiarize the design team with Project areas.
9. Prepare preliminary plans identifying required topographic field surveys, subsurface soils investigations, and other field investigative programs. Develop a schedule of completion of required surveys and investigations to minimize interference with airport and tenant operations.
10. Acquire the necessary topographic survey of and utility data for, the Project site, including related office computations and drafting. The scope of services assumes that the survey will not be required to follow FAA AC 150/5300-16, 17 and 18. If it is determined by FAA to be necessary, the cost of these services is not included in the CONSULTANT's original Scope of Services and shall therefore be an Additional Service. An existing basemap will be developed in CAD from this information.
11. Acquire the necessary soils and existing pavement investigation data, including borings, pavement cores, and test pits, as well as field and laboratory tests, to identify existing pavement conditions and subsurface soil characteristics.
 - a. Coordinate with ORL personnel and attend pre-work safety meeting.
 - b. Coordinate the staking of boring locations at the site with the project surveyor.
 - c. Clear utilities at the boring locations with Sunshine One Call and GOAA.
 - d. Mobilize rotary drilling equipment/personnel.
 - e. Conduct 10 standard penetration borings to 10 feet in the new taxiway areas.
 - f. Obtain 10 cores through existing pavement to determine depth of asphalt surface and base course. The cores will also be used to determine the thicknesses of existing pavements into which this project will tie.
 - g. Perform routine laboratory soil classification tests (moisture content, Atterberg Limits and/or sieve analyses tests) to supplement visual soil classification.
 - h. Perform up to 3 California Bearing Ratio (CBR) tests for each of the soil types encountered beneath the new pavement areas.
 - i. Issue a geotechnical engineering report signed and sealed by a geotechnical

SCOPE OF WORK
BP-049, ORL Taxiways A, B and E4 Rehabilitation
03-11-2022

engineer licensed in Florida.

12. Using applicable forms or FAA AGIS tool, submit requests for Modifications to FAA Standards through GOAA, if required.
13. Conduct site inspections to verify topographic survey, inventory pavement distresses, inventory lighting features, electrical vault conditions and other Project-related existing physical features and facilities.
14. Finalize horizontal pavement geometrical layouts and place sufficient information on drawings to layout proposed pavements in field during construction.
15. Develop preliminary three-dimensional design in order to develop pavement centerline profiles, typical sections, and other grading details for the proposed work.
16. Analyze data obtained from subsurface soils and existing pavement investigation program and determine properties of existing pavement and soil materials. Document results of program, existing conditions, and recommendations in the design report.
17. Develop pavement design in accordance with FAA advisory circular 150/5320-6, latest edition. Pavement design to include two alternatives, one for pavement rehabilitation and one for new construction including asphalt concrete. Design will include documentation of traffic use of the pavement provided by GOAA and from the most recent Airport Master Plan and extrapolated for the 20-year design period. CONSULTANT will use FAARFIELD software to perform design analysis.
18. Develop preliminary drainage designs, including computation of surface water runoff volumes, and layout facilities necessary to accommodate expected flows.
19. The Team will obtain and review as-built plans, stormwater reports and other documents from various agencies including: St. Johns River Water Management District (SJRWMD), Orange County, City of Orlando, Florida Department of Transportation (FDOT), and the United States Army Corps of Engineers (USACE). Field visits and surveys will be made to verify pipe sizes/inverts, control structures, ponds, channel cross sections, and other drainage parameters necessary to provide and update a complete stormwater routing model.
 - a. A pre-application meeting will be coordinated with SJRWMD and GOAA to discuss the project, alternative designs, and plan review processes and requirements. Also during this phase, specific drainage improvements will be identified, and conceptual cost estimates will be presented in a summary report to GOAA.
20. Develop SJRWMD permit documentation including stormwater routing models, and other necessary documentation. At the end of this phase, an environmental resource permit (ERP) application will be submitted to SJRWMD.
21. Develop preliminary airfield lighting, signage, including light fixture spacing and cable circuitry requirements.

SCOPE OF WORK
BP-049, ORL Taxiways A, B and E4 Rehabilitation
03-11-2022

22. Investigate existing electrical system capacities and perform preliminary design of electrical power distribution and control systems.
23. Develop preliminary airfield marking layouts.
24. Develop preliminary designs of structural Project elements, such as catch basins, manholes, and culverts.
25. Develop a draft construction safety phasing plan (CSPP) that endeavors to limit interference by the Project's construction with airport and tenant operations. The scope of services assumes that FAA will perform Safety Risk Management (SRM) review based on the draft CSPP, and that a Safety Risk Management Panel (SRMP) and safety risk mitigation will not be necessary. If SRMP is determined by FAA to be necessary, the cost of these services is not included in the CONSULTANT's original Scope of Services and shall therefore be an Additional Service. It is anticipated the cost for these services would range from \$15,000 to \$40,000 depending on the complexity and detail required.
26. Prepare preliminary Contract Drawings (approximately 60% complete) providing sufficient detail for review of design concepts by GOAA, FAA and FDOT. Drawings on 30" x 42" Paper. It is anticipated that the drawings will consist of the following sheets:

Approx. Number of Sheets	Name
1	Cover Sheet
1	Sheet Index and General Notes
1	Legend and Abbreviations
1	Summary of Pay Items
1	Survey Control Plan
1	Overall Site Plan and Key map
4	Existing Conditions
1	Existing Conditions Schedules
4	Demolition Plan
2	Demolition Details
4	Grading Plan
2	Profiles
4	Geometry Plan
1	Geometry Control
2	Typical Sections
2	Grading Sections
4	Soil Erosion and Sediment Control Plans
2	Soil Erosion and Sediment Control Details
4	Drainage Plans
2	Drainage Structures and Details

SCOPE OF WORK
BP-049, ORL Taxiways A, B and E4 Rehabilitation
03-11-2022

4	Marking Plans
2	Marking Details
8	Construction Safety and Phasing Plans
1	Airspace Critical Locations Plan
2	Construction Safety Phasing Details
4	Airfield Lighting and Signage Demolition Plans
4	Airfield Lighting and Signage Plan
4	Airfield Lighting and Signage Details
2	Electrical Vault Plans and Details
75	Total Sheets

27. Develop front end specifications by reviewing GOAA provided Division 0 and developing Division 1 documents.
28. Develop technical specifications expected to be required for the proposed work using FAA standards from FAA AC 150/5370-10.
29. Perform a detailed quantity takeoff of all bid items to be included on the Contract Drawings and in the General Specifications of the Contract Documents.
30. Update opinion of probable construction cost to reflect the outcomes of preliminary Project design.
31. Evaluation and update of construction schedule.
32. Prepare written design report documenting items such as design concepts, assumptions, and alternative designs. Identify conflicts with or deviations from FAA standards for design items, and request a waiver from the FAA if necessary.
33. GOAA with documents provided by the C&S Team shall submit a revised 7460 form electronically to the FAA.
34. Perform an internal quality control review on all design documents.
35. Schedule and conduct meetings with GOAA, tenants and other stakeholders to discuss phasing and other project elements. It is assumed that this will entail two meetings during this phase.
36. Submit sufficient copies of design development documents to GOAA, FAA and FDOT for their review and comment.
37. Schedule and conduct a design development review meeting to discuss and resolve GOAA, FAA and FDOT comments.
38. Schedule and conduct a pre-design meeting with GOAA, FAA and FDOT to review the scope of services and become familiar with the Project requirements and operational concerns during the Project's construction.

SCOPE OF WORK
BP-049, ORL Taxiways A, B and E4 Rehabilitation
03-11-2022

39. Provide written responses to all comments received.

CONSTRUCTION DOCUMENTS

The specific services to be provided or furnished for this Phase of the Project are the following:

1. Perform project management duties such as project planning, invoice preparation, schedule coordination and coordination of design team.
2. Provide to GOAA monthly project status reports.
3. Schedule coordination - consultant shall provide continued coordination so that project schedules are met for each phase of work included in this contract. Particular phases of design may be delayed by the FAA and FDOT review process.
4. Finalize three-dimensional design in order to finalize pavement centerline profiles, typical sections, and other grading details for the proposed work.
5. Finalize pavement designs.
6. Detail and finalize pavement details, rehabilitation details and pavement sections.
7. Finalize drainage designs and layouts and detail pipe and drainage structure installations.
8. Finalize SJRWMD permit documentation.
9. Finalize structure designs and detail Portland cement concrete, reinforcing bar, and other related installations.
10. Finalize airfield lighting, signage layouts, electrical power distribution and system designs, ALCMS update and detail installations.
11. Finalize pavement marking layouts, and detail installations.
12. Prepare final Contract Drawings on 30" x 42" paper.
13. Perform a detailed quantity takeoff of all bid items to be included on the Contract Drawings and in the General Specifications of the Contract Documents.
14. Finalize front end specifications by reviewing GOAA provided Division 0 and finalizing Division 1 documents.
15. Finalize written Technical Specifications for all construction materials and installations. FAA standard technical specifications shall be used whenever possible, with supplemental specifications developed by the consultant.
16. Finalize CSPP and include in Specifications and on the Contract Drawings.
17. Submit a final signage and marking plan to GOAA for their submission to FAA.
18. Prepare final opinion of probable construction costs based upon the actual bid items and quantity takeoffs.

SCOPE OF WORK
BP-049, ORL Taxiways A, B and E4 Rehabilitation
03-11-2022

19. Finalize design report to be consistent with the final design.
20. Incorporate selected sustainability measures into specifications where appropriate.
21. Finalize development for submittal and testing schedule.
22. Update and finalize construction schedule
23. Prepare soil erosion control plan and stormwater pollution control plan and submit required documents to comply with soil erosion stormwater permit requirements for construction projects.
 - a. Reimbursable expenses for the associated permit fees are included.
24. GOAA with documents provided by the C&S Team shall submit both the construction safety phasing plan and 7460 form electronically to the FAA.
25. Perform final internal quality control review on all design documents.
26. Schedule and conduct meetings with GOAA, tenants and other stakeholders to discuss phasing and other project elements. It is assumed that this will entail two meetings during this phase.
27. Submit draft final documents to GOAA, FAA and FDOT for final review and comment.
28. Schedule and conduct draft final review meeting with GOAA, FAA and FDOT to discuss and resolve final comments.
29. Provide written responses to all comments received.
30. Finalize opinion of probable construction costs
31. Incorporate all 90% review comments into the 100% plans.
32. Schedule and conduct final review meeting with GOAA, FAA and FDOT to discuss and resolve final comments.
33. Deliver 100% plans to GOAA Engineering department to obtain their approval and stamp. Attend a final permit set review meeting.

BIDDING AND AWARD PHASE

The specific services to be provided or furnished for this Phase of the Project are the following:

1. To be scoped and coordinated at a later date.

CONSTRUCTION ADMINISTRATION AND RECORD DRAWINGS

The specific services to be provided or furnished for this Phase of the Project are the following:

1. To be scoped and coordinated at a later date.

SCOPE OF WORK
BP-049, ORL Taxiways A, B and E4 Rehabilitation
03-11-2022

MEETINGS

The meetings listed above in the scope of work are listed here in one concise location:

1. Design Development Phase (60%)
 - i. Pre-design meeting with GOAA only.
 - ii. Pre-application meeting with SJRWMD and GOAA.
 - iii. General meeting to discuss phasing and other project elements with GOAA, tenants, and other stakeholders (two meetings)
 - iv. TRT review meeting
 - v. Pre-Design meeting with GOAA, FDOT and FAA.
2. Construction Documents
 - i. General meeting to discuss phasing and other project elements with GOAA, tenants, and other stakeholders (two meetings)
 - ii. TRT review meeting – draft final
 - iii. TRT review meeting - final

SCOPE OF WORK
BP-049, ORL Taxiways A, B and E4 Rehabilitation
03-11-2022

ASSUMPTIONS:

The conditions or considerations in developing the scope and fee for the project described above include:

1. No boundary survey is included in this proposal.
2. No right-of-way or other deed research is included in this proposal.
3. The placement of boundary monumentation is not required.
4. GOAA will provided barricades for the geotechnical and survey field work.
5. GOAA will supply any deeds, maps, recorded and unrecorded information and an up-to-date abstract of title that will assist in the progress of this project.
6. The NEPA and preliminary environmental review, including the collection and review of available documents such as published wetland maps, soil conservation survey maps, and previous master plan and environmental archaeological studies, to identify potential impacts the Project may have on the environment will be submitted by GOAA.
7. As-built drawings are available and will be provided prior to field visit.
8. Access to the site for inspection/survey can only be performed during daytime hours.
9. Cost estimate will be based on bid prices from recent project at the airport and other similar regional airports.
10. Soil sampling for contaminants will not be required for this project.
11. Uploading the as-built data on the AGIS website will be completed during the construction phase.
12. Coordination for FAA Reimbursable or NAVAIDs modification is not required.

END OF SCOPE OF WORK

EXHIBIT A - CONSULTANT'S COMPENSATION PROPOSAL
TABLE C-1
SUMMARY OF TOTAL CONTRACT VALUE

Phase of Project:	Preliminary Design	Schematic 30%	Development 60%	Const. Docs. 95%	Bidding & Award	SUBTOTAL	Const. Admin.	Record Documents	TOTAL CONTRACT
1.0 Lump Sum Fee	\$0	\$0	\$108,286	\$121,191	\$0	\$229,477	\$0	\$0	\$229,477
2.0 Not to Exceed Reimbursable Fee	\$0	\$0	\$50,142	\$0	\$0	\$50,142	\$0	\$0	\$50,142
3.0 Not to Exceed Reimbursable Expenses	\$0	\$0	\$10,078	\$300	\$0	\$10,378	\$0	\$0	\$10,378
4.0 TOTAL CONTRACT VALUE:	\$0	\$0	\$168,506	\$121,491	\$0	\$289,997	\$0	\$0	\$289,997

Total Lump Sum Labor Hours	0	0	923	1025	0	1948	0	0	1948
Total Not to Exceed Reimbursable Labor Hours	0	0	629	0	0	629	0	0	629
TOTAL LABOR HOURS:	0	0	1552	1025	0	2577	0	0	2577
Average Hourly Rate:	#DIV/0!	#DIV/0!	\$109	\$119	#DIV/0!	\$113	#DIV/0!	#DIV/0!	\$113

Notes:

1. The lump sum cells in Table C-1 are linked to Table C-2 values
2. The Not to Exceed cells in Table C-1 are linked to Table C-4 values
3. The linked cells are based on a maximum of 5 subconsultants; if more than 5 are included enter all values manually.

**EXHIBIT A - CONSULTANT'S COMPENSATION PROPOSAL
TABLE C-2
SUMMARY OF LUMP SUM FEES**

Phase of Project	Preliminary Design		Schematic (30%)		Development (60%)		Const. Docs. (95%)		Bidding & Award		Const. Admin.		Record Documents		TOTAL		
	labor hours	Total Fee	labor hours	Total Fee	labor hours	Total Fee	labor hours	Total Fee	labor hours	Total Fee	labor hours	Total Fee	labor hours	Total Fee	labor hours	Cost	Avg. Rate
Consultant - C&S																	
Lump Sum Fee Subtotal	0	\$0	0	\$0	684	\$85,814	889	\$108,619	0	\$0	0	\$0	0	\$0	1573	\$194,433	\$124
Subconsultant No. 1 - AID																	
Lump Sum Fee Subtotal	0	\$0	0	\$0	239	\$22,472	136	\$12,572	0	\$0	0	\$0	0	\$0	375	\$35,044	\$93
Subconsultant No. 2 - Echo																	
Lump Sum Fee Subtotal	0	\$0	0	\$0	0	\$0	0	\$0	0	\$0	0	\$0	0	\$0	0	\$0	#DIV/0!
Subconsultant No. 3 - BFA																	
Lump Sum Fee Subtotal	0	\$0	0	\$0	0	\$0	0	\$0	0	\$0	0	\$0	0	\$0	0	\$0	#DIV/0!
Subconsultant No. 4 - Woolpert																	
Lump Sum Fee Subtotal	0	\$0	0	\$0	0	\$0	0	\$0	0	\$0	0	\$0	0	\$0	0	\$0	#DIV/0!
Subconsultant No. 5 - Nadic																	
Lump Sum Fee Subtotal	0	\$0	0	\$0	0	\$0	0	\$0	0	\$0	0	\$0	0	\$0	0	\$0	#DIV/0!
Total Lump Sum Amount:	0	\$0	0	\$0	923	\$108,286	1025	\$121,191	0	\$0	0	\$0	0	\$0	1948	\$229,477	\$118

EXHIBIT A - CONSULTANT'S COMPENSATION PROPOSAL
TABLE C-3
BREAKDOWN OF LUMP SUM FEES

Position C&S Engineers, Inc.	Project Coordinator		Senior Designer		Engineer		Project Engineer		Senior Project Engineer		Senior Project Manager		QC Reviewer		Principal		TOTAL				
	\$81.00		\$91.00		\$108.00		\$128.00		\$135.00		\$207.00		\$235.00		\$347.00		labor hours	Cost	Avg. Hourly Rate		
	labor hours	Cost	labor hours	Cost	labor hours	Cost	labor hours	Cost	labor hours	Cost	labor hours	Cost	labor hours	Cost	labor hours	Cost					
Preliminary Design	0	\$0	0	\$0	0	\$0	0	\$0	0	\$0	0	\$0	0	\$0	0	\$0	0	\$0	0	\$0	#DIV/0!
Not Applicable	0	\$0	0	\$0	0	\$0	0	\$0	0	\$0	0	\$0	0	\$0	0	\$0	0	\$0	0	\$0	#DIV/0!
	0	\$0	0	\$0	0	\$0	0	\$0	0	\$0	0	\$0	0	\$0	0	\$0	0	\$0	0	\$0	#DIV/0!
Sub-Total Preliminary Design	0	\$0	0	\$0	0	\$0	0	\$0	0	\$0	0	\$0	0	\$0	0	\$0	0	\$0	0	\$0	#DIV/0!
Schematic Design (30%)	0	\$0	0	\$0	0	\$0	0	\$0	0	\$0	0	\$0	0	\$0	0	\$0	0	\$0	0	\$0	#DIV/0!
Not Applicable	0	\$0	0	\$0	0	\$0	0	\$0	0	\$0	0	\$0	0	\$0	0	\$0	0	\$0	0	\$0	#DIV/0!
	0	\$0	0	\$0	0	\$0	0	\$0	0	\$0	0	\$0	0	\$0	0	\$0	0	\$0	0	\$0	#DIV/0!
Sub-Total Schematic Design (30%)	0	\$0	0	\$0	0	\$0	0	\$0	0	\$0	0	\$0	0	\$0	0	\$0	0	\$0	0	\$0	#DIV/0!
Design Development (60%)																					
1. Perform project management duties such as project planning, invoice preparation, schedule coordination and coordination of design team	0	\$0	0	\$0	0	\$0	0	\$0	0	\$0	20	\$4,140	0	\$0	0	\$0	20	\$4,140	0	\$0	\$207
2. Provide to GOAA monthly project status reports	0	\$0	0	\$0	0	\$0	0	\$0	0	\$0	4	\$828	0	\$0	0	\$0	4	\$828	0	\$0	\$207
3. Schedule coordination - consultant shall provide continued coordination so that project schedules are met for each phase of work included in this contract. Particular phases of design may be reviewed by the FAA and EDCB review process	0	\$0	0	\$0	0	\$0	0	\$0	0	\$0	1	\$198	0	\$0	0	\$0	1	\$198	0	\$0	\$207
4. The construction budget for this project is \$3,125 million for a base bid project. Add alternates may be added to this project. The Consultant shall advise GOAA as to options available for reducing construction costs to stay within the construction budget	0	\$0	0	\$0	0	\$0	0	\$0	0	\$0	0	\$0	0	\$0	0	\$0	0	\$0	0	\$0	#DIV/0!
5. Schedule and conduct a pre design meeting with GOAA to review the scope of services and become familiar with the Project requirements and operational concerns during the Project's construction	4	\$324	0	\$0	4	\$432	0	\$0	0	\$0	4	\$828	0	\$0	0	\$0	12	\$1,584	0	\$0	\$132
6. Develop a communication plan for all formal and informal communication for project duration	0	\$0	0	\$0	0	\$0	0	\$0	0	\$0	2	\$414	0	\$0	0	\$0	2	\$414	0	\$0	\$207
7. Acquire and review record documents such as plans, specifications, reports, and studies to become familiar with data that is available for the Project	0	\$0	0	\$0	0	\$0	0	\$0	0	\$0	2	\$414	0	\$0	0	\$0	10	\$1,278	0	\$0	\$128
8. Perform a preliminary Project site inspection to further familiarize the design team with Project areas	0	\$0	0	\$0	2	\$216	0	\$0	0	\$0	2	\$414	0	\$0	0	\$0	4	\$630	0	\$0	\$158
9. Prepare preliminary plans identifying required topographic field surveys, subsurface soils investigations, and other field investigative programs. Develop a schedule of completion of required surveys and investigate plans to minimize interference with airside construction activities	0	\$0	0	\$0	4	\$432	0	\$0	0	\$0	0	\$0	0	\$0	0	\$0	4	\$432	0	\$0	\$108
Scope Item A Scope Item																					
10. Acquire the necessary topographic survey of site utility data for the Project site, including related office consultations and drafting. The scope of services assumes that the survey will not be required to follow FAA AC 150/5300-16-17 and 18. If it is determined by FAA to be necessary, the cost of these services is not included in the Consultant's original Scope of Services and shall therefore be an Additional Service. An existing baseline will be developed to CAD from this information	0	\$0	0	\$0	0	\$0	0	\$0	0	\$0	0	\$0	0	\$0	0	\$0	0	\$0	0	\$0	#DIV/0!
Scope Item B Scope Item																					
11. Acquire the necessary soils and existing pavement investigation data including borings, pavement cores, and test pits, as well as field and laboratory tests, to identify existing pavement conditions and subsurface soil characteristics	0	\$0	0	\$0	0	\$0	0	\$0	0	\$0	0	\$0	0	\$0	0	\$0	0	\$0	0	\$0	#DIV/0!
12. Using applicable forms or FAA AGIS tool, submit requests for Modifications to FAA Standards through GOAA, if required	0	\$0	0	\$0	0	\$0	0	\$0	0	\$0	2	\$414	0	\$0	0	\$0	2	\$414	0	\$0	\$207

**EXHIBIT A - CONSULTANT'S COMPENSATION PROPOSAL
TABLE C-3
BREAKDOWN OF LUMP SUM FEES**

Position C&S Engineers, Inc. Rate (\$/hour)	Project Coordinator		Senior Designer		Engineer		Project Engineer		Senior Project Engineer		Senior Project Manager		QC Reviewer		Principal		TOTAL		
	\$81.00		\$91.00		\$108.00		\$128.00		\$135.00		\$207.00		\$235.00		\$347.00		labor hours	Cost	Avg. Hourly Rate
	labor hours	Cost	labor hours	Cost	labor hours	Cost	labor hours	Cost	labor hours	Cost	labor hours	Cost	labor hours	Cost	labor hours	Cost			
13. Conduct site inspections to verify topographic survey, inventory pavement distresses, inventory lighting features, electrical vault conditions, and other Project-related existing physical features and facilities.	0	\$0	0	\$0	6	\$648	0	\$0	0	\$0	6	\$1,242	0	\$0	0	\$0	12	\$1,890	\$157.50
14. Finalize for construction pavement geometrical layouts and provide sufficient information on drawings to layout proposed pavements in field during construction.	0	\$0	0	\$0	8	\$864	0	\$0	0	\$0	2	\$414	0	\$0	0	\$0	10	\$1,278	\$127.80
15. Develop preliminary three-dimensional design in order to develop pavement condition profiles, typical sections, and other grading details for the proposed work.	0	\$0	0	\$0	60	\$6,480	8	\$1,024	0	\$0	4	\$828	0	\$0	0	\$0	92	\$10,312	\$112.09
16. Analyze data obtained from subsurface soils and existing pavement investigation program and determine properties of existing pavement and soil materials. Document results of program, existing conditions, and recommendations in the design report.	0	\$0	0	\$0	0	\$0	0	\$0	0	\$0	2	\$414	0	\$0	0	\$0	2	\$414	\$207.00
17. Develop pavement design in accordance with FAA advisory circular 150/5320-6, latest edition. Pavement design to include two alternatives, one for pavement rehabilitation and one for new construction including asphalt concrete. Design will include documentation of traffic use of the pavement provided by GDAA and from the most recent Airport Master Plan and extrapolated for the 20-year design period. C&S/STANT will use FAARFIELD software to perform design analysis.	0	\$0	0	\$0	0	\$0	0	\$0	0	\$0	2	\$414	0	\$0	0	\$0	2	\$414	\$207.00
18. Develop preliminary drainage designs, including computation of surface water runoff volumes, and layout facilities necessary to accommodate expected flows.	0	\$0	0	\$0	0	\$0	0	\$0	0	\$0	2	\$414	0	\$0	0	\$0	2	\$414	\$207.00
19. The Team will obtain and review as-built plans, stormwater reports, and other documents from various agencies, including St. Johns River Water Management District (SJRWMD), Orange County City of Orange, Florida Department of Transportation (FDOT), and the United States Army Corps of Engineers (USACE). Field visits and surveys will be made to verify pipe sizes, inverts, control structures, ponds, channel cross sections, and other drainage parameters necessary to provide and update a complete stormwater routing model.	0	\$0	0	\$0	0	\$0	0	\$0	0	\$0	2	\$414	0	\$0	0	\$0	2	\$414	\$207.00
Specific AID Scope Item																			
20. Develop SJRWMD permit documentation including stormwater routing models, and other necessary documentation. At the end of this phase, an environmental resource permit (ERP) application will be submitted to SJRWMD.	0	\$0	0	\$0	0	\$0	0	\$0	0	\$0	0	\$0	0	\$0	0	\$0	0	\$0	#DIV/0!
21. Develop preliminary aerial lighting signage, including light fixture spacing and cable circuitry requirements.	0	\$0	0	\$0	0	\$0	0	\$0	0	\$0	2	\$414	0	\$0	0	\$0	2	\$414	\$207.00
22. Investigate existing electrical system capacities and perform preliminary design of electrical power distribution and control systems.	0	\$0	0	\$0	0	\$0	6	\$768	0	\$0	2	\$414	0	\$0	0	\$0	10	\$1,186	\$118.60
Specific AID Scope Item																			
23. Develop preliminary aerial marking layouts.	0	\$0	0	\$0	0	\$0	0	\$0	0	\$0	0	\$0	0	\$0	0	\$0	0	\$0	#DIV/0!
24. Develop preliminary designs of structural Project elements, such as catch basins, manholes, and culverts.	0	\$0	0	\$0	0	\$0	2	\$256	0	\$0	1	\$207	0	\$0	0	\$0	3	\$463	\$154.33

EXHIBIT A - CONSULTANT'S COMPENSATION PROPOSAL
TABLE C-3
BREAKDOWN OF LUMP SUM FEES

Position C&S Engineers, Inc.	Project Coordinator		Senior Designer		Engineer		Project Engineer		Senior Project Engineer		Senior Project Manager		QC Reviewer		Principal		TOTAL		
	\$81.00		\$91.00		\$108.00		\$128.00		\$135.00		\$207.00		\$235.00		\$347.00		labor hours	Cost	Avg. Hourly Rate
	Rate (\$/Hour)	labor hours	Cost	labor hours	Cost	labor hours	Cost	labor hours	Cost	labor hours	Cost	labor hours	Cost	labor hours	Cost	labor hours			
25. Develop a draft construction safety phasing plan (CSPP) that endeavors to limit interference by the Project's construction with airport and tenant operations. The scope of services assumes that FAA will perform Safety Risk Management (SRM) review based on the draft CSPP and that a Safety Risk Management Panel (SRMP) and safety risk mitigation will not be necessary. If SRMP is determined by FAA to be necessary, the cost of these services shall be included in the Consultant's original Scope of Services and shall therefore be an Additional Service. It is anticipated the cost for these services would range from \$15,000 to \$40,000 depending on the complexity and detail required.	1	\$0	0	\$0	0	\$0	0	\$0	0	\$0	4	\$878	0	\$0	0	\$0	4	\$678	\$207
26. Prepare preliminary Contract Drawings (approximately 60% complete) providing sufficient detail for review of design concepts by GOAA, FAA and FDOT. Drawings on 30" x 42" Paper.	0	\$0	180	\$16,380	0	\$0	0	\$0	0	\$0	0	\$0	0	\$0	0	\$0	180	\$16,380	\$91
27. Develop final and specifications by reviewing GOAA provided Division C and developing Division 1 documents.	8	\$648	0	\$0	16	\$1,728	16	\$1,728	0	\$0	4	\$828	0	\$0	0	\$0	44	\$5,252	\$119
28. Develop technical specifications expected to be required for the proposed work using FAA standards from FAA AC 150/5370-10.	8	\$648	0	\$0	16	\$1,728	24	\$3,072	0	\$0	4	\$828	0	\$0	0	\$0	52	\$6,276	\$121
29. Perform a detailed quantity takeoff of all bid items to be included on the Contract Drawings and in the General Specifications of the Contract Documents.	0	\$0	0	\$0	24	\$2,592	0	\$0	0	\$0	0	\$0	0	\$0	0	\$0	24	\$2,592	\$108
30. Create opinion of probable construction cost to reflect the outcomes of preliminary Project design.	0	\$0	0	\$0	4	\$432	0	\$0	0	\$0	4	\$828	0	\$0	0	\$0	8	\$1,260	\$158
31. Evaluation and update of construction schedule.	0	\$0	0	\$0	16	\$1,728	0	\$0	0	\$0	2	\$414	0	\$0	0	\$0	18	\$2,142	\$119
32. Prepare written design report documenting items such as design concepts, assumptions, and alternative designs. Identify conflicts with requirements from FAA standards for design items and request a waiver from the FAA if necessary.	2	\$162	0	\$0	40	\$4,320	0	\$0	0	\$0	8	\$1,656	0	\$0	0	\$0	48	\$5,178	\$115
33. GOAA will document provided by the C&S Team shall submit a revised 7460 form electronically to the FAA.	0	\$0	0	\$0	0	\$0	0	\$0	0	\$0	2	\$414	0	\$0	0	\$0	2	\$414	\$207
34. Perform an internal quality control review on all design documents.	0	\$0	15	\$1,350	8	\$864	8	\$1,024	0	\$0	2	\$414	14	\$5,640	0	\$0	37	\$9,307	\$253
35. Schedule and conduct meetings with GOAA, tenants and other stakeholders to discuss phasing and other project elements. It is assumed that this will entail two meetings during this phase.	0	\$0	0	\$0	0	\$0	0	\$0	0	\$0	6	\$1,242	0	\$0	0	\$0	6	\$1,242	\$207
36. Submit sufficient copies of design development documents to GOAA, FAA and FDOT for their review and comment.	4	\$324	0	\$0	0	\$0	0	\$0	0	\$0	2	\$414	0	\$0	0	\$0	6	\$738	\$121
37. Schedule and conduct a design development review meeting to discuss and resolve GOAA, FAA and FDOT comments.	4	\$324	0	\$0	0	\$0	0	\$0	0	\$0	6	\$1,242	0	\$0	0	\$0	10	\$1,566	\$157
38. Schedule and conduct a pre design meeting with GOAA, FAA and FDOT to review the scope of services and become familiar with the Project requirements and operational concerns during the Project's construction.	4	\$324	0	\$0	0	\$0	0	\$0	0	\$0	6	\$1,242	0	\$0	0	\$0	10	\$1,566	\$157
39. Provide written responses to all comments received.	4	\$324	0	\$0	4	\$432	4	\$512	0	\$0	4	\$828	0	\$0	0	\$0	16	\$2,096	\$131
	0	\$0	0	\$0	0	\$0	0	\$0	0	\$0	0	\$0	0	\$0	0	\$0	0	\$0	#DIV/0!
	0	\$0	0	\$0	0	\$0	0	\$0	0	\$0	0	\$0	0	\$0	0	\$0	0	\$0	#DIV/0!
Sub-Total Design Development (60%)	36	\$2,916	195	\$17,745	240	\$25,920	70	\$8,960	0	\$0	119	\$24,633	24	\$5,640	0	\$0	684	\$85,814	\$125
Construction Documents (95%)																			
1. Perform project management duties such as project printing, review preparation, schedule coordination and coordination of design team.	0	\$0	0	\$0	0	\$0	0	\$0	0	\$0	24	\$4,968	0	\$0	0	\$0	24	\$4,968	\$207
2. Provide to GOAA monthly project status reports.	0	\$0	0	\$0	0	\$0	0	\$0	0	\$0	4	\$828	0	\$0	0	\$0	4	\$828	\$207

**EXHIBIT A - CONSULTANT'S COMPENSATION PROPOSAL
TABLE C-3
BREAKDOWN OF LUMP SUM FEES**

Position: C&S Engineers, Inc.	Project Coordinator		Senior Designer		Engineer		Project Engineer		Senior Project Engineer		Senior Project Manager		QC Reviewer		Principal		TOTAL		
	\$81.00		\$91.00		\$108.00		\$128.00		\$135.00		\$207.00		\$235.00		\$347.00		labor hours	Cost	Avg. Hourly Rate
	labor hours	Cost	labor hours	Cost	labor hours	Cost	labor hours	Cost	labor hours	Cost	labor hours	Cost	labor hours	Cost	labor hours	Cost			
3. Schedule coordination - consultant shall provide continued coordination so that project schedules are met for each phase of work included in this contract. Particular phases of design may be delayed by the FAA and FDOT review process.	0	\$0	0	\$0	0	\$0	0	\$0	0	\$0	1	\$828	0	\$0	0	\$0	1	\$828	\$207
4. Finalize three-dimensional design in order to finalize pavement centerline profiles, typical sections, and other grading details for the proposed work.	0	\$0	0	\$0	160	\$17,280	16	\$2,048	0	\$0	0	\$0	0	\$0	0	\$0	176	\$19,328	\$110
5. Finalize pavement designs.	0	\$0	0	\$0	0	\$0	0	\$0	0	\$0	1	\$207	0	\$0	0	\$0	1	\$207	\$207
6. Detail and finalize pavement details, rehabilitation details and pavement sections.	0	\$0	0	\$0	0	\$0	0	\$0	0	\$0	1	\$207	0	\$0	0	\$0	1	\$207	\$207
Specific AID Scope Item	0	\$0	0	\$0	0	\$0	0	\$0	0	\$0	0	\$0	0	\$0	0	\$0	0	\$0	#DIV/0!
7. Finalize drainage designs and layouts and detail pipe and drainage structure installations.	0	\$0	0	\$0	0	\$0	0	\$0	0	\$0	1	\$207	0	\$0	0	\$0	1	\$207	\$207
8. Finalize SJRWMD permit documentation.	0	\$0	0	\$0	0	\$0	0	\$0	0	\$0	1	\$207	0	\$0	0	\$0	1	\$207	\$207
9. Finalize structure designs and detail Portland cement concrete reinforcing bar, and other related installations.	0	\$0	0	\$0	0	\$0	0	\$0	0	\$0	1	\$207	0	\$0	0	\$0	1	\$207	\$207
10. Finalize airfield lighting, signage layouts, electrical power distribution and system designs, ATCMS update and detail installations.	0	\$0	0	\$0	16	\$1,728	8	\$1,024	0	\$0	0	\$0	0	\$0	0	\$0	24	\$2,752	\$115
11. Finalize pavement marking layouts and detail installations.	0	\$0	0	\$0	0	\$0	0	\$0	0	\$0	2	\$414	0	\$0	0	\$0	2	\$414	\$207
12. Prepare final Contract Drawings on 30 x 42 paper.	0	\$0	180	\$16,380	30	\$3,240	0	\$0	0	\$0	0	\$0	0	\$0	0	\$0	210	\$19,620	\$93
13. Perform a detailed quantity take-off of all bid items to be included on the Contract Drawings and in the General Specifications of the Contract Documents.	0	\$0	0	\$0	16	\$1,728	1	\$512	0	\$0	0	\$0	0	\$0	0	\$0	20	\$2,240	\$112
14. Finalize front end specifications by reviewing GOAA provided Division 0 and finalizing Division 1 documents.	0	\$0	0	\$0	16	\$1,728	4	\$512	0	\$0	4	\$828	0	\$0	0	\$0	24	\$3,068	\$128
15. Finalize written Technical Specifications for all construction materials and installations. FAA standard technical specifications shall be used whenever possible, with supplemental specifications developed by the consultant.	0	\$0	0	\$0	16	\$1,728	16	\$2,048	0	\$0	2	\$414	0	\$0	0	\$0	34	\$4,190	\$123
16. Finalize CSPP and include in Specifications and on the Contract Drawings.	4	\$324	0	\$0	16	\$1,728	0	\$0	0	\$0	2	\$414	0	\$0	0	\$0	22	\$2,466	\$112
17. Submit a final signage and marking plan to GOAA for their submission to FAA.	0	\$0	8	\$728	0	\$0	0	\$0	0	\$0	2	\$414	0	\$0	0	\$0	10	\$1,142	\$114
18. Prepare final opinion of probable construction costs based upon the actual bid items and quantity takeoffs.	0	\$0	0	\$0	4	\$432	4	\$512	0	\$0	1	\$207	0	\$0	0	\$0	9	\$1,151	\$128
19. Finalize design report to be consistent with the final design.	0	\$0	0	\$0	6	\$648	8	\$1,024	0	\$0	8	\$1,056	0	\$0	0	\$0	22	\$3,328	\$151
20. Incorporate selected sustainability measures into specifications where appropriate.	0	\$0	0	\$0	0	\$0	0	\$0	0	\$0	1	\$207	0	\$0	0	\$0	1	\$207	\$207
21. Finalize development for submittal and testing schedule.	0	\$0	0	\$0	0	\$0	0	\$0	0	\$0	2	\$414	0	\$0	0	\$0	2	\$414	\$207
22. Update and finalize construction schedule.	2	\$162	0	\$0	0	\$0	8	\$1,024	0	\$0	2	\$414	0	\$0	0	\$0	12	\$1,600	\$133
Specific AID scope item	0	\$0	0	\$0	0	\$0	0	\$0	0	\$0	0	\$0	0	\$0	0	\$0	0	\$0	
24. Prepare soil erosion control plan and stormwater pollution control plan and submit required documents to comply with soil erosion stormwater permit requirements for construction projects.	0	\$0	0	\$0	0	\$0	0	\$0	0	\$0	2	\$414	0	\$0	0	\$0	2	\$414	\$207
25. GOAA with documents provided by the C&S Team shall submit both the construction safety planning plan and 7400 form electronically to the FAA.	8	\$648	16	\$1,456	8	\$864	8	\$1,024	0	\$0	4	\$828	40	\$9,400	0	\$0	64	\$14,276	\$169
26. Schedule and conduct meetings with GOAA tenants and other stakeholders to discuss planning and other project elements. It is assumed that this will entail two meetings during this phase.	0	\$0	4	\$364	4	\$432	0	\$0	0	\$0	4	\$828	0	\$0	0	\$0	12	\$1,624	\$135
27. Submit draft final documents to GOAA, FAA and FDOT for final review and comment.	0	\$0	0	\$0	4	\$432	4	\$512	0	\$0	1	\$207	0	\$0	0	\$0	9	\$1,151	\$128

EXHIBIT A - CONSULTANT'S COMPENSATION PROPOSAL
TABLE C-3
BREAKDOWN OF LUMP SUM FEES

Position C&S Engineers, Inc.	Project Coordinator		Senior Designer		Engineer		Project Engineer		Senior Project Engineer		Senior Project Manager		QC Reviewer		Principal		TOTAL		
	\$81.00		\$91.00		\$108.00		\$128.00		\$135.00		\$207.00		\$235.00		\$347.00		labor hours	Cost	Avg. Hourly Rate
	labor hours	Cost	labor hours	Cost	labor hours	Cost	labor hours	Cost	labor hours	Cost	labor hours	Cost	labor hours	Cost	labor hours	Cost			
28. Schedule and conduct draft final review meeting with GOAA, FAA and FDOT to discuss and resolve final comments	6	\$486	0	\$0	6	\$648	0	\$0	0	\$0	6	\$1,242	0	\$0	0	\$0	18	\$2,376	\$132
29. Provide written responses to all comments received	0	\$0	0	\$0	8	\$864	4	\$512	0	\$0	2	\$414	0	\$0	0	\$0	14	\$1,790	\$128
30. Finalize opinion of probable construction costs	0	\$0	0	\$0	4	\$432	8	\$1,024	0	\$0	2	\$414	0	\$0	0	\$0	14	\$1,870	\$134
31. Incorporate all 90% review comments into the 100% plans	0	\$0	40	\$3,640	24	\$2,592	24	\$3,072	0	\$0	16	\$3,312	0	\$0	0	\$0	104	\$12,616	\$121
32. Schedule and conduct final review meeting with GOAA, FAA and FDOT to discuss and resolve final comments	8	\$648	0	\$0	6	\$648	0	\$0	0	\$0	6	\$1,242	0	\$0	0	\$0	20	\$2,538	\$127
33. Deliver 100% plans to GOAA Engineering department to obtain their approval and stamp. Attend final permit set review meeting	8	\$648	0	\$0	0	\$0	0	\$0	0	\$0	0	\$0	0	\$0	0	\$0	8	\$648	\$81
	0	\$0	0	\$0	0	\$0	0	\$0	0	\$0	0	\$0	0	\$0	0	\$0	0	\$0	#DIV/0!
	0	\$0	0	\$0	0	\$0	0	\$0	0	\$0	0	\$0	0	\$0	0	\$0	0	\$0	#DIV/0!
Sub-Total Construction Documents (95%)	36	\$2,916	248	\$22,568	344	\$37,152	116	\$14,848	0	\$0	105	\$21,735	40	\$9,400	0	\$0	889	\$108,619	\$122
Bidding and Award																			
Not Applicable:	0	\$0	0	\$0	0	\$0	0	\$0	0	\$0	0	\$0	0	\$0	0	\$0	0	\$0	#DIV/0!
	0	\$0	0	\$0	0	\$0	0	\$0	0	\$0	0	\$0	0	\$0	0	\$0	0	\$0	#DIV/0!
	0	\$0	0	\$0	0	\$0	0	\$0	0	\$0	0	\$0	0	\$0	0	\$0	0	\$0	#DIV/0!
Sub-Total Bidding and Award	0	\$0	0	\$0	0	\$0	0	\$0	0	\$0	0	\$0	0	\$0	0	\$0	0	\$0	#DIV/0!
Construction Administration																			
Not Applicable:	0	\$0	0	\$0	0	\$0	0	\$0	0	\$0	0	\$0	0	\$0	0	\$0	0	\$0	#DIV/0!
	0	\$0	0	\$0	0	\$0	0	\$0	0	\$0	0	\$0	0	\$0	0	\$0	0	\$0	#DIV/0!
	0	\$0	0	\$0	0	\$0	0	\$0	0	\$0	0	\$0	0	\$0	0	\$0	0	\$0	#DIV/0!
Sub-Total Construction Administration	0	\$0	0	\$0	0	\$0	0	\$0	0	\$0	0	\$0	0	\$0	0	\$0	0	\$0	#DIV/0!

**EXHIBIT A - CONSULTANT'S COMPENSATION PROPOSAL
TABLE C-3
BREAKDOWN OF LUMP SUM FEES**

Position: CAS Engineers, Inc.	Project Coordinator		Senior Designer		Engineer		Project Engineer		Senior Project Engineer		Senior Project Manager		QC Reviewer		Principal		TOTAL		
	labor hours	Cost	labor hours	Cost	labor hours	Cost	labor hours	Cost	labor hours	Cost	labor hours	Cost	labor hours	Cost	labor hours	Cost	labor hours	Cost	Avg. Hourly Rate
Rate (\$/Hour):	\$81.00		\$91.00		\$108.00		\$128.00		\$135.00		\$207.00		\$235.00		\$347.00				
Closeout	0	\$0	0	\$0	0	\$0	0	\$0	0	\$0	0	\$0	0	\$0	0	\$0	0	\$0	#DIV/0!
Not Applicable	0	\$0	0	\$0	0	\$0	0	\$0	0	\$0	0	\$0	0	\$0	0	\$0	0	\$0	#DIV/0!
Sub-Total Closeout	0	\$0	0	\$0	0	\$0	0	\$0	0	\$0	0	\$0	0	\$0	0	\$0	0	\$0	#DIV/0!
TOTAL LUMP SUM FEE:	72	\$5,832	443	\$40,313	584	\$63,072	186	\$23,808	0	\$0	224	\$46,368	64	\$15,040	0	\$0	1573	\$194,433	\$124

NOTES:

- 1 A separate spreadsheet is required for each consultant/subconsultant with any portion of it's services to be compensated on a lump sum basis
- 2 Each spreadsheet to be customized to accurately indicate the actual services to be provided for each phase of the Project

EXHIBIT A - CONSULTANT'S COMPENSATION PROPOSAL
TABLE C-3
BREAKDOWN OF LUMP SUM FEES

Position American Infrastructure Development, Inc.	Principal		QC Reviewer		Sr. Project Manager		Sr. Engineer		Engineer		Sr. CADD Designer		CADD Technician		Clerical		TOTAL				
	\$165.00		\$98.00		\$151.00		\$115.00		\$70.00		\$82.00		\$60.00		\$50.00		labor hours	Cost	Avg Hourly Rate		
	labor hours	Cost	labor hours	Cost	labor hours	Cost	labor hours	Cost	labor hours	Cost	labor hours	Cost	labor hours	Cost	labor hours	Cost					
Preliminary Design																					
Not Applicable	0	\$0	0	\$0	0	\$0	0	\$0	0	\$0	0	\$0	0	\$0	0	\$0	0	\$0	0	\$0	#DIV/0!
	0	\$0	0	\$0	0	\$0	0	\$0	0	\$0	0	\$0	0	\$0	0	\$0	0	\$0	0	\$0	#DIV/0!
	0	\$0	0	\$0	0	\$0	0	\$0	0	\$0	0	\$0	0	\$0	0	\$0	0	\$0	0	\$0	#DIV/0!
Sub-Total Preliminary Design	0	\$0	0	\$0	0	\$0	0	\$0	0	\$0	0	\$0	0	\$0	0	\$0	0	\$0	0	\$0	#DIV/0!
Schematic Design (30%)																					
Not Applicable	0	\$0	0	\$0	0	\$0	0	\$0	0	\$0	0	\$0	0	\$0	0	\$0	0	\$0	0	\$0	#DIV/0!
	0	\$0	0	\$0	0	\$0	0	\$0	0	\$0	0	\$0	0	\$0	0	\$0	0	\$0	0	\$0	#DIV/0!
	0	\$0	0	\$0	0	\$0	0	\$0	0	\$0	0	\$0	0	\$0	0	\$0	0	\$0	0	\$0	#DIV/0!
Sub-Total Schematic Design (30%)	0	\$0	0	\$0	0	\$0	0	\$0	0	\$0	0	\$0	0	\$0	0	\$0	0	\$0	0	\$0	#DIV/0!
Design Development (60%)																					
Prepare for and Attend Pre-Design Meeting	0	\$0	0	\$0	4	\$604	4	\$580	0	\$0	0	\$0	0	\$0	0	\$0	0	\$0	8	\$1,184	\$133
General Coordination with Design Team	0	\$0	0	\$0	8	\$1,208	4	\$580	0	\$0	0	\$0	0	\$0	0	\$0	0	\$0	12	\$1,668	\$139
Obtain Record Documents	0	\$0	0	\$0	0	\$0	0	\$0	0	\$0	0	\$0	0	\$0	0	\$0	0	\$0	0	\$0	#DIV/0!
Obtain Permits and Records	0	\$0	0	\$0	0	\$0	0	\$0	2	\$140	0	\$0	0	\$0	0	\$0	0	\$0	2	\$140	\$70
Prepare Drainage Concepts for S.R.W.A.D. Meetings	0	\$0	0	\$0	0	\$0	4	\$560	0	\$0	2	\$160	0	\$0	0	\$0	0	\$0	4	\$560	\$115
Prepare for and Conduct S.R.W.A.D. Pre-Application Meeting	0	\$0	0	\$0	0	\$0	0	\$0	0	\$0	0	\$0	0	\$0	0	\$0	0	\$0	0	\$0	#DIV/0!
Prepare Preliminary Pavement Design	0	\$0	0	\$0	0	\$0	0	\$0	0	\$0	0	\$0	0	\$0	0	\$0	0	\$0	0	\$0	#DIV/0!
Field Visit to Review Site and Assess Existing Stormwater Conditions	0	\$0	0	\$0	0	\$0	4	\$560	0	\$0	0	\$0	0	\$0	0	\$0	0	\$0	4	\$560	\$115
Prepare Preliminary Drainage Plans	0	\$0	0	\$0	0	\$0	4	\$580	0	\$0	24	\$1,680	0	\$0	0	\$0	0	\$0	28	\$2,260	\$81
Develop Stormwater Pollution Prevention Plan	0	\$0	0	\$0	0	\$0	0	\$0	0	\$0	0	\$0	0	\$0	0	\$0	0	\$0	0	\$0	#DIV/0!
Develop Preliminary Construction Drawings - Pavement	0	\$0	0	\$0	0	\$0	2	\$280	4	\$280	16	\$1,120	0	\$0	0	\$0	0	\$0	22	\$1,680	\$81
Develop Preliminary Construction Drawings - Drainage	0	\$0	0	\$0	0	\$0	2	\$280	4	\$280	16	\$1,120	0	\$0	0	\$0	0	\$0	22	\$1,680	\$81
Develop Preliminary Construction Drawings - Markings	0	\$0	0	\$0	0	\$0	2	\$280	0	\$0	20	\$1,400	0	\$0	0	\$0	0	\$0	22	\$1,680	\$81
Develop Technical Specifications, Pavement, Markings and Drainage	0	\$0	0	\$0	0	\$0	2	\$280	4	\$280	20	\$1,400	0	\$0	0	\$0	0	\$0	26	\$2,160	\$83
Updated Quantity Takeoff	0	\$0	0	\$0	0	\$0	0	\$0	20	\$1,400	0	\$0	0	\$0	0	\$0	0	\$0	20	\$1,400	\$70
Update Record Estimate of Probable Const. Cost	0	\$0	0	\$0	0	\$0	0	\$0	0	\$0	16	\$1,120	0	\$0	0	\$0	0	\$0	16	\$1,120	\$70
Prepare Design Report, Drainage, Markings and Pavement Portions	0	\$0	0	\$0	0	\$0	2	\$280	0	\$0	0	\$0	0	\$0	0	\$0	0	\$0	2	\$280	\$115
Quality Control Review	0	\$0	1	\$98	0	\$0	0	\$0	0	\$0	0	\$0	0	\$0	0	\$0	0	\$0	1	\$98	\$98
Attend 60% Review Meeting	0	\$0	8	\$708	0	\$0	0	\$0	0	\$0	0	\$0	0	\$0	0	\$0	0	\$0	8	\$708	\$89
	0	\$0	0	\$0	1	\$604	4	\$560	0	\$0	0	\$0	0	\$0	0	\$0	0	\$0	5	\$1,664	\$111
	0	\$0	0	\$0	0	\$0	0	\$0	0	\$0	0	\$0	0	\$0	0	\$0	0	\$0	0	\$0	#DIV/0!
Sub-Total Design Development (60%)	0	\$0	9	\$864	18	\$2,718	58	\$6,670	34	\$2,380	120	\$8,840	0	\$0	0	\$0	0	\$0	239	\$22,472	\$94
Construction Documents (95%)																					
General Coordination with Design Team	0	\$0	0	\$0	4	\$604	4	\$580	0	\$0	4	\$328	0	\$0	0	\$0	0	\$0	12	\$1,992	\$116
Finalize Stormwater Pollution Prevention Plan	0	\$0	0	\$0	0	\$0	1	\$115	0	\$0	0	\$0	0	\$0	0	\$0	0	\$0	9	\$711	\$80
Finalize Construction Drawings - Pavement	0	\$0	0	\$0	0	\$0	1	\$115	4	\$280	14	\$1,018	0	\$0	0	\$0	0	\$0	19	\$1,553	\$81
Finalize Construction Drawings - Drainage	0	\$0	0	\$0	0	\$0	1	\$115	4	\$280	16	\$1,120	0	\$0	0	\$0	0	\$0	21	\$1,671	\$81
Finalize Construction Drawings - Markings	0	\$0	0	\$0	0	\$0	1	\$115	0	\$0	16	\$1,120	0	\$0	0	\$0	0	\$0	17	\$1,400	\$82
Finalize Technical Specifications, Pavement, Markings and Drainage	0	\$0	0	\$0	0	\$0	2	\$280	0	\$0	0	\$0	0	\$0	0	\$0	0	\$0	2	\$280	\$115
Updated Quantity Takeoff	0	\$0	0	\$0	0	\$0	0	\$0	0	\$0	0	\$0	0	\$0	0	\$0	0	\$0	0	\$0	#DIV/0!
Update Record Estimate of Probable Const. Cost	0	\$0	0	\$0	0	\$0	0	\$0	0	\$0	0	\$0	0	\$0	0	\$0	0	\$0	0	\$0	#DIV/0!
Finalize Design Report, Drainage and Pavement Portions	0	\$0	0	\$0	0	\$0	4	\$560	0	\$0	0	\$0	0	\$0	0	\$0	0	\$0	4	\$560	\$115
Quality Control Review	0	\$0	8	\$708	0	\$0	0	\$0	0	\$0	0	\$0	0	\$0	0	\$0	0	\$0	8	\$708	\$89
Attend 95% Review Meeting	0	\$0	0	\$0	0	\$0	1	\$604	0	\$0	0	\$0	0	\$0	0	\$0	0	\$0	1	\$604	\$111
Prepare Written Responses to 95% Design	0	\$0	0	\$0	0	\$0	0	\$0	0	\$0	0	\$0	0	\$0	0	\$0	0	\$0	0	\$0	#DIV/0!
Resolve 95% Comments on Drawings, Submit Documents	0	\$0	0	\$0	0	\$0	0	\$0	0	\$0	0	\$0	0	\$0	0	\$0	0	\$0	0	\$0	#DIV/0!
	0	\$0	0	\$0	0	\$0	0	\$0	0	\$0	0	\$0	0	\$0	0	\$0	0	\$0	0	\$0	#DIV/0!
	0	\$0	0	\$0	0	\$0	0	\$0	0	\$0	0	\$0	0	\$0	0	\$0	0	\$0	0	\$0	#DIV/0!
Sub-Total Construction Documents (95%)	0	\$0	8	\$768	10	\$1,510	26	\$2,990	20	\$1,400	72	\$5,904	0	\$0	0	\$0	0	\$0	136	\$12,572	\$92

**EXHIBIT A - CONSULTANT'S COMPENSATION PROPOSAL
TABLE C-3
BREAKDOWN OF LUMP SUM FEES**

Position: American Infrastructure Development, Inc.	Principal		QC Reviewer		Sr Project Manager		Sr Engineer		Engineer		Sr. CADD Designer		CADD Technician		Clerical		TOTAL			
	\$165.00		\$96.00		\$151.00		\$115.00		\$70.00		\$82.00		\$60.00		\$50.00		labor	Cost	Avg. Hourly	
Rate (\$/Hour)	labor	Cost	labor	Cost	labor	Cost	labor	Cost	labor	Cost	labor	Cost	labor	Cost	labor	Cost	labor	Cost	Rate	
Bidding and Award																				
Not Applicable	0	\$0	0	\$0	0	\$0	0	\$0	0	\$0	0	\$0	0	\$0	0	\$0	0	\$0	0	\$0 #DIV/0!
	0	\$0	0	\$0	0	\$0	0	\$0	0	\$0	0	\$0	0	\$0	0	\$0	0	\$0	0	\$0 #DIV/0!
	0	\$0	0	\$0	0	\$0	0	\$0	0	\$0	0	\$0	0	\$0	0	\$0	0	\$0	0	\$0 #DIV/0!
Sub-Total Bidding and Award	0	\$0	0	\$0	0	\$0	0	\$0	0	\$0	0	\$0	0	\$0	0	\$0	0	\$0	0	\$0 #DIV/0!
Construction Administration																				
Not Applicable	0	\$0	0	\$0	0	\$0	0	\$0	0	\$0	0	\$0	0	\$0	0	\$0	0	\$0	0	\$0 #DIV/0!
	0	\$0	0	\$0	0	\$0	0	\$0	0	\$0	0	\$0	0	\$0	0	\$0	0	\$0	0	\$0 #DIV/0!
	0	\$0	0	\$0	0	\$0	0	\$0	0	\$0	0	\$0	0	\$0	0	\$0	0	\$0	0	\$0 #DIV/0!
Sub-Total Construction Administration	0	\$0	0	\$0	0	\$0	0	\$0	0	\$0	0	\$0	0	\$0	0	\$0	0	\$0	0	\$0 #DIV/0!
Closeout																				
Not Applicable	0	\$0	0	\$0	0	\$0	0	\$0	0	\$0	0	\$0	0	\$0	0	\$0	0	\$0	0	\$0 #DIV/0!
	0	\$0	0	\$0	0	\$0	0	\$0	0	\$0	0	\$0	0	\$0	0	\$0	0	\$0	0	\$0 #DIV/0!
	0	\$0	0	\$0	0	\$0	0	\$0	0	\$0	0	\$0	0	\$0	0	\$0	0	\$0	0	\$0 #DIV/0!
Sub-Total Closeout	0	\$0	0	\$0	0	\$0	0	\$0	0	\$0	0	\$0	0	\$0	0	\$0	0	\$0	0	\$0 #DIV/0!
TOTAL LUMP SUM FEE:	0	\$0	17	\$1,632	28	\$4,228	84	\$9,660	54	\$3,780	192	\$15,744	0	\$0	0	\$0	0	\$0	375	\$35,044

NOTES:

- 1 A separate spreadsheet is required for each consultant/subconsultant with any portion of it's services to be compensated on a lump sum basis.
- 2 Each spreadsheet to be customized to accurately indicate the actual services to be provided for each phase of the Project.

EXHIBIT A - CONSULTANT'S COMPENSATION PROPOSAL
TABLE C-4
SUMMARY OF NOT TO EXCEED REIMBURSABLE FEES AND EXPENSES

Phase of Project	Preliminary Design		Schematic (30%)		Development (60%)		Const. Docs. (85%)		Bidding & Award		Const. Admin.		Record Documents		TOTAL		
	labor hours	Total Fee	labor hours	Total Fee	labor hours	Total Fee	labor hours	Total Fee	labor hours	Total Fee	labor hours	Total Fee	labor hours	Total Fee	labor hours	Cost	Avg. Rate
Consultant - C&S																	
Not to Exceed Reimbursable Fee	0	\$0	0	\$0	0	\$0	0	\$0	0	\$0	0	\$0	0	\$0	0	\$0	#DIV/0!
Not to Exceed Reimbursable Expenses		\$0		\$0		\$0		\$300		\$0		\$0		\$0		\$300	#DIV/0!
Sub-Total Designer	0	\$0	0	\$0	0	\$0	0	\$300	0	\$0	0	\$0	0	\$0	0	\$300	#DIV/0!
Subconsultant No. 1 - AID																	
Not to Exceed Reimbursable Fee	0	\$0	0	\$0	0	\$0	0	\$0	0	\$0	0	\$0	0	\$0	0	\$0	#DIV/0!
Not to Exceed Reimbursable Expenses		\$0		\$0		\$0		\$0		\$0		\$0		\$0		\$0	#DIV/0!
Sub-Total Subconsultant No. 1	0	\$0	0	\$0	0	\$0	0	\$0	0	\$0	0	\$0	0	\$0	0	\$0	#DIV/0!
Subconsultant No. 2 - Echo																	
Not to Exceed Reimbursable Fee	0	\$0	0	\$0	0	\$0	0	\$0	0	\$0	0	\$0	0	\$0	0	\$0	#DIV/0!
Not to Exceed Reimbursable Expenses		\$0		\$0		\$0		\$0		\$0		\$0		\$0		\$0	#DIV/0!
Sub-Total Subconsultant No. 2	0	\$0	0	\$0	0	\$0	0	\$0	0	\$0	0	\$0	0	\$0	0	\$0	#DIV/0!
Subconsultant No. 3 - BFA																	
Not to Exceed Reimbursable Fee	0	\$0	0	\$0	560	\$42,040	0	\$0	0	\$0	0	\$0	0	\$0	560	\$42,040	75
Not to Exceed Reimbursable Expenses		\$0		\$0		\$0		\$0		\$0		\$0		\$0		\$0	#DIV/0!
Sub-Total Subconsultant No. 3	0	\$0	0	\$0	560	\$42,040	0	\$0	0	\$0	0	\$0	0	\$0	560	\$42,040	75
Subconsultant No. 4 - Woolpert																	
Not to Exceed Reimbursable Fee	0	\$0	0	\$0	0	\$0	0	\$0	0	\$0	0	\$0	0	\$0	0	\$0	#DIV/0!
Not to Exceed Reimbursable Expenses		\$0		\$0		\$0		\$0		\$0		\$0		\$0		\$0	#DIV/0!
Sub-Total Subconsultant No. 4	0	\$0	0	\$0	0	\$0	0	\$0	0	\$0	0	\$0	0	\$0	0	\$0	#DIV/0!
Subconsultant No. 5 - Nadic																	
Not to Exceed Reimbursable Fee	0	\$0	0	\$0	69	\$8,102	0	\$0	0	\$0	0	\$0	0	\$0	69	\$8,102	117
Not to Exceed Reimbursable Expenses		\$0		\$0		\$10,078		\$0		\$0		\$0		\$0		\$10,078	263
Sub-Total Subconsultant No. 5	0	\$0	0	\$0	69	\$18,180	0	\$0	0	\$0	0	\$0	0	\$0	69	\$18,180	263
Total Not to Exceed Amount:	0	\$0	0	\$0	629	\$60,220	0	\$300	0	\$0	0	\$0	0	\$0	629	\$60,520	96

**EXHIBIT A - CONSULTANT'S COMPENSATION PROPOSAL
TABLE C-3
BREAKDOWN OF NOT TO EXCEED REIMBURSABLE FEES**

Position Barnes, Forland and Associates, Inc.	Instrument Person		Rod Person		Senior CADD Designer		Senior Project Manager		Sr. Surveyor and Mapper		SUE Crew Member		SUE Crew Technician		Survey Technician/ Utility Coordinator		TOTAL				
	\$52.00		\$55.00		\$85.00		\$183.00		\$141.00		\$57.00		\$64.00		\$76.00		labor hours	Cost	Avg. Hourly Rate		
	labor hours	Cost	labor hours	Cost	labor hours	Cost	labor hours	Cost	labor hours	Cost	labor hours	Cost	labor hours	Cost	labor hours	Cost					
Preliminary Design																					
Not Applicable	0	\$0	0	\$0	0	\$0	0	\$0	0	\$0	0	\$0	0	\$0	0	\$0	0	\$0	0	\$0	#DIV/0!
	0	\$0	0	\$0	0	\$0	0	\$0	0	\$0	0	\$0	0	\$0	0	\$0	0	\$0	0	\$0	#DIV/0!
	0	\$0	0	\$0	0	\$0	0	\$0	0	\$0	0	\$0	0	\$0	0	\$0	0	\$0	0	\$0	#DIV/0!
Sub-Total Preliminary Design	0	\$0	0	\$0	0	\$0	0	\$0	0	\$0	0	\$0	0	\$0	0	\$0	0	\$0	0	\$0	#DIV/0!
Schematic Design (30%)																					
Not Applicable	0	\$0	0	\$0	0	\$0	0	\$0	0	\$0	0	\$0	0	\$0	0	\$0	0	\$0	0	\$0	#DIV/0!
	0	\$0	0	\$0	0	\$0	0	\$0	0	\$0	0	\$0	0	\$0	0	\$0	0	\$0	0	\$0	#DIV/0!
	0	\$0	0	\$0	0	\$0	0	\$0	0	\$0	0	\$0	0	\$0	0	\$0	0	\$0	0	\$0	#DIV/0!
Sub-Total Schematic Design (30%)	0	\$0	0	\$0	0	\$0	0	\$0	0	\$0	0	\$0	0	\$0	0	\$0	0	\$0	0	\$0	#DIV/0!
Design Development (60%)																					
1) Acquire the necessary topographic survey of and utility data for the Project Site including related office computations and drafting. The scope of services assumes that the survey will not be required to follow FAA AC 150.5303-16, 17 and 18. If it is determined by FAA to be necessary, the cost of these services is not included in the Consultant's original Scope of Services and shall therefore be an Additional Service. An existing base map will be developed in CAD from this information.	0	\$0	200	\$11,000	120	\$10,200	0	\$0	40	\$5,640	0	\$0	0	\$0	200	\$15,200	560	\$42,040	575		
	0	\$0	0	\$0	0	\$0	0	\$0	0	\$0	0	\$0	0	\$0	0	\$0	0	\$0	0	\$0	#DIV/0!
	0	\$0	0	\$0	0	\$0	0	\$0	0	\$0	0	\$0	0	\$0	0	\$0	0	\$0	0	\$0	#DIV/0!
Sub-Total Design Development (60%)	0	\$0	200	\$11,000	120	\$10,200	0	\$0	40	\$5,640	0	\$0	0	\$0	200	\$15,200	560	\$42,040	575		
Construction Documents (95%)																					
Not Applicable	0	\$0	0	\$0	0	\$0	0	\$0	0	\$0	0	\$0	0	\$0	0	\$0	0	\$0	0	\$0	#DIV/0!
	0	\$0	0	\$0	0	\$0	0	\$0	0	\$0	0	\$0	0	\$0	0	\$0	0	\$0	0	\$0	#DIV/0!
	0	\$0	0	\$0	0	\$0	0	\$0	0	\$0	0	\$0	0	\$0	0	\$0	0	\$0	0	\$0	#DIV/0!
Sub-Total Construction Documents (95%)	0	\$0	0	\$0	0	\$0	0	\$0	0	\$0	0	\$0	0	\$0	0	\$0	0	\$0	0	\$0	#DIV/0!
Bidding and Award																					
Not Applicable	0	\$0	0	\$0	0	\$0	0	\$0	0	\$0	0	\$0	0	\$0	0	\$0	0	\$0	0	\$0	#DIV/0!
	0	\$0	0	\$0	0	\$0	0	\$0	0	\$0	0	\$0	0	\$0	0	\$0	0	\$0	0	\$0	#DIV/0!
	0	\$0	0	\$0	0	\$0	0	\$0	0	\$0	0	\$0	0	\$0	0	\$0	0	\$0	0	\$0	#DIV/0!
Sub-Total Bidding and Award	0	\$0	0	\$0	0	\$0	0	\$0	0	\$0	0	\$0	0	\$0	0	\$0	0	\$0	0	\$0	#DIV/0!
Construction Administration																					
Not Applicable	0	\$0	0	\$0	0	\$0	0	\$0	0	\$0	0	\$0	0	\$0	0	\$0	0	\$0	0	\$0	#DIV/0!
	0	\$0	0	\$0	0	\$0	0	\$0	0	\$0	0	\$0	0	\$0	0	\$0	0	\$0	0	\$0	#DIV/0!
	0	\$0	0	\$0	0	\$0	0	\$0	0	\$0	0	\$0	0	\$0	0	\$0	0	\$0	0	\$0	#DIV/0!
Sub-Total Construction Administration	0	\$0	0	\$0	0	\$0	0	\$0	0	\$0	0	\$0	0	\$0	0	\$0	0	\$0	0	\$0	#DIV/0!
Closout																					
Not Applicable	0	\$0	0	\$0	0	\$0	0	\$0	0	\$0	0	\$0	0	\$0	0	\$0	0	\$0	0	\$0	#DIV/0!
	0	\$0	0	\$0	0	\$0	0	\$0	0	\$0	0	\$0	0	\$0	0	\$0	0	\$0	0	\$0	#DIV/0!
	0	\$0	0	\$0	0	\$0	0	\$0	0	\$0	0	\$0	0	\$0	0	\$0	0	\$0	0	\$0	#DIV/0!
Sub-Total Closout	0	\$0	0	\$0	0	\$0	0	\$0	0	\$0	0	\$0	0	\$0	0	\$0	0	\$0	0	\$0	#DIV/0!
TOTAL NOT TO EXCEED REIMBURSABLE FEE:	0	\$0	200	\$11,000	120	\$10,200	0	\$0	40	\$5,640	0	\$0	0	\$0	200	\$15,200	560	\$42,040	575		

NOTES:

1. A separate spreadsheet is required for each consultant/subconsultant with any portion of it's services to be compensated on a not to exceed reimbursable basis.
2. Each spreadsheet to be customized to accurately indicate the actual services to be provided for each phase of the Project.

**EXHIBIT A - CONSULTANT'S COMPENSATION PROPOSAL
TABLE C-3
BREAKDOWN OF NOT TO EXCEED REIMBURSABLE FEES**

Position Nadic Engineering Services, Inc	Principal Engineer		Senior Project Manager		Senior Engineer/Geologist		Project Engineer/Geologist		Engineer/Geologist		Senior CAD/DWG/Support / Senior Estimator		Engineering Technician I		Clerical		TOTAL				
	\$172.00		\$169.00		\$159.00		\$139.00		\$87.00		\$74.00		\$59.00		\$50.00		labor hours	Cost	Avg Hourly Rate		
	labor hours	Cost	labor hours	Cost	labor hours	Cost	labor hours	Cost	labor hours	Cost	labor hours	Cost	labor hours	Cost	labor hours	Cost					
Preliminary Design																					
Not Applicable	0	\$0	0	\$0	0	\$0	0	\$0	0	\$0	0	\$0	0	\$0	0	\$0	0	\$0	0	\$0	#DIV/0!
	0	\$0	0	\$0	0	\$0	0	\$0	0	\$0	0	\$0	0	\$0	0	\$0	0	\$0	0	\$0	#DIV/0!
Sub-Total Preliminary Design	0	\$0	0	\$0	0	\$0	0	\$0	0	\$0	0	\$0	0	\$0	0	\$0	0	\$0	0	\$0	#DIV/0!
Schematic Design (30%)																					
Not Applicable	0	\$0	0	\$0	0	\$0	0	\$0	0	\$0	0	\$0	0	\$0	0	\$0	0	\$0	0	\$0	#DIV/0!
	0	\$0	0	\$0	0	\$0	0	\$0	0	\$0	0	\$0	0	\$0	0	\$0	0	\$0	0	\$0	#DIV/0!
Sub-Total Schematic Design (30%)	0	\$0	0	\$0	0	\$0	0	\$0	0	\$0	0	\$0	0	\$0	0	\$0	0	\$0	0	\$0	#DIV/0!
Design Development (60%)																					
1. Acquire the necessary data on existing pavement (investigation data including borings, pavement notes, and test pits, as well as field and laboratory tests to identify existing pavement conditions and subsurface soil characteristics)	1	\$6	1	\$169	1	\$0	1	\$556	1	\$0	1	\$0	1	\$0	1	\$0	1	\$0	5	\$726	\$145
2. Coordinate with O&M personnel and attend pre-work safety meeting	1	\$0	1	\$169	1	\$0	3	\$417	1	\$67	1	\$74	1	\$0	1	\$0	1	\$0	6	\$747	\$125
3. Coordinate the staging of boring locations at the site with the project engineer	1	\$0	1	\$0	1	\$0	1.5	\$70	1	\$0	1	\$296	1	\$0	1	\$0	1	\$0	5	\$366	\$81
4. Clear utilities at the boring locations with Sunshine One Call and S&DAA	1	\$0	1	\$0	1	\$0	0.5	\$70	1	\$0	1	\$46	1	\$0	1	\$0	1	\$0	5	\$366	\$81
5. Mobilize safety drilling equipment personnel	1	\$0	1	\$0	1	\$0	1	\$0	1	\$0	2	\$144	1	\$0	1	\$0	1	\$0	2	\$144	\$72
6. Conduct 1.5 standard penetration borings to 10 feet in the new roadway areas	1	\$0	1	\$0	1	\$0	1	\$119	1	\$0	4	\$296	1	\$0	1	\$0	1	\$0	9	\$425	\$87
7. Obtain 1.5 cores through existing pavement to determine depth of asphalt surface and base course. The cores will also be used to determine the thickness of existing pavement to which the Project will be	1	\$0	1	\$0	1	\$0	1	\$119	1	\$0	4	\$296	1	\$0	1	\$0	1	\$0	9	\$425	\$87
8. Perform routine laboratory soil classification tests into stone content. Attempt to run at least sieve analysis tests to supplement visual soil classification	1	\$0	1	\$0	1	\$0	1	\$0	2	\$174	1	\$0	1	\$0	1	\$0	1	\$0	7	\$174	\$87
9. Perform up to 3 California bearing Ratio (CBR) tests for each of the soil types encountered beneath the new pavement areas	1	\$0	1	\$169	1	\$0	4	\$556	2	\$174	1	\$0	1	\$0	1	\$0	1	\$0	7	\$899	\$128
Issue a geotechnical engineering report signed and sealed by a geotechnical engineer licensed in Florida	2	\$44	1	\$169	1	\$0	12	\$1,008	1	\$0	6	\$444	1	\$0	1	\$0	1	\$0	24	\$3,008	\$116
	0	\$0	0	\$0	0	\$0	0	\$0	0	\$0	0	\$0	0	\$0	0	\$0	0	\$0	0	\$0	#DIV/0!
	0	\$0	0	\$0	0	\$0	0	\$0	0	\$0	0	\$0	0	\$0	0	\$0	0	\$0	0	\$0	#DIV/0!
Sub-Total Design Development (60%)	2	\$44	11	\$1,859	0	\$0	26	\$3,614	5	\$435	25	\$1,850	0	\$0	0	\$0	0	\$0	69	\$8,102	\$117
Construction Documents (95%)																					
Not Applicable	0	\$0	0	\$0	0	\$0	0	\$0	0	\$0	0	\$0	0	\$0	0	\$0	0	\$0	0	\$0	#DIV/0!
	0	\$0	0	\$0	0	\$0	0	\$0	0	\$0	0	\$0	0	\$0	0	\$0	0	\$0	0	\$0	#DIV/0!
Sub-Total Construction Documents (95%)	0	\$0	0	\$0	0	\$0	0	\$0	0	\$0	0	\$0	0	\$0	0	\$0	0	\$0	0	\$0	#DIV/0!
Bidding and Award																					
Not Applicable	0	\$0	0	\$0	0	\$0	0	\$0	0	\$0	0	\$0	0	\$0	0	\$0	0	\$0	0	\$0	#DIV/0!
	0	\$0	0	\$0	0	\$0	0	\$0	0	\$0	0	\$0	0	\$0	0	\$0	0	\$0	0	\$0	#DIV/0!
Sub-Total Bidding and Award	0	\$0	0	\$0	0	\$0	0	\$0	0	\$0	0	\$0	0	\$0	0	\$0	0	\$0	0	\$0	#DIV/0!
Construction Administration																					
Not Applicable	0	\$0	0	\$0	0	\$0	0	\$0	0	\$0	0	\$0	0	\$0	0	\$0	0	\$0	0	\$0	#DIV/0!
	0	\$0	0	\$0	0	\$0	0	\$0	0	\$0	0	\$0	0	\$0	0	\$0	0	\$0	0	\$0	#DIV/0!
Sub-Total Construction Administration	0	\$0	0	\$0	0	\$0	0	\$0	0	\$0	0	\$0	0	\$0	0	\$0	0	\$0	0	\$0	#DIV/0!

EXHIBIT A - CONSULTANT'S COMPENSATION PROPOSAL
TABLE C-3
BREAKDOWN OF NOT TO EXCEED REIMBURSABLE FEES

Position Nadic Engineering Services, Inc.	Principal Engineer		Senior Project Manager		Senior Engineer/Geologist		Project Engineer/Geologist		Engineer/Geologist		Senior CAD/BIMS Support / Senior Engineer		Engineering Technician II		Clerical		TOTAL			
	labor hours	Cost	labor hours	Cost	labor hours	Cost	labor hours	Cost	labor hours	Cost	labor hours	Cost	labor hours	Cost	labor hours	Cost	labor hours	Cost	Avg Hourly Rate	
		\$172.00		\$169.00		\$159.00		\$139.00		\$87.00		\$74.00		\$59.00		\$50.00				
Rate (\$/hour)																				
Closeout	0	\$0	0	\$0	0	\$0	0	\$0	0	\$0	0	\$0	0	\$0	0	\$0	0	\$0	0	\$0 #DIV/0!
Not Applicable	0	\$0	0	\$0	0	\$0	0	\$0	0	\$0	0	\$0	0	\$0	0	\$0	0	\$0	0	\$0 #DIV/0!
	0	\$0	0	\$0	0	\$0	0	\$0	0	\$0	0	\$0	0	\$0	0	\$0	0	\$0	0	\$0 #DIV/0!
Sub-Total Closeout	0	\$0	0	\$0	0	\$0	0	\$0	0	\$0	0	\$0	0	\$0	0	\$0	0	\$0	0	\$0 #DIV/0!
TOTAL NOT TO EXCEED REIMBURSABLE FEE:	2	\$344	11	\$1,859	0	\$0	26	\$3,614	5	\$435	25	\$1,850	0	\$0	0	\$0	89	\$8,102	1112	

NOTES:

- 1 A separate spreadsheet is required for each consultant/subconsultant with any portion of it's services to be compensated on a not to exceed reimbursable basis
- 2 Each spreadsheet to be customized to accurately indicate the actual services to be provided for each phase of the Project

EXHIBIT A - CONSULTANT'S COMPENSATION PROPOSAL
TABLE C-6
BREAKDOWN OF NOT TO EXCEED REIMBURSABLE EXPENSES

REIMBURSABLE EXPENSES

A complete breakdown of estimated reimbursable expenses, if any, which will be compensated on a not to exceed reimbursable basis, shall be included in this section. The Consultant may use any format for this breakdown, provided that it clearly defines the basis for the not to exceed amount. A breakdown of each subconsultant's expenses is also required.

Consultant - C&S

Const. Docs. (95%)

A. Environmental Permits for SJRWMD = \$ 300.00

Subconsultant No. 1 - AID

Not Applicable.

Subconsultant No. 2 - Echo

Not Applicable.

Subconsultant No. 3 - BFA

Not Applicable.

Subconsultant No. 4 - Woolpert

Not Applicable.

EXHIBIT A - CONSULTANT'S COMPENSATION PROPOSAL
TABLE C-6
BREAKDOWN OF NOT TO EXCEED REIMBURSABLE EXPENSES

Subconsultant No. 5 - Nadic

Field Services

A.	Mobilization/Demobilization - Truck Mounted Drill Rig (50-Mile Radius)	L.S.	\$550.00	1	\$550.00
B.	Mobilization/Demobilization - Asphalt Coring Equipment (50-Mile Radius)	L.S.	\$380.00	1	\$380.00
C.	MOT Portable Sign	Each	\$55.00	0	\$0.00
D.	MOT Provide Channeling Devices - Cone	Each	\$5.00	0	\$0.00
E.	GPS Rental	Day	\$80.00	1	\$80.00
F.	Standard Penetration Test (SPT) Borings (0 - 50'), Land	Foot	\$16.50	100	\$1,650.00
G.	Asphalt Core, Clean and Patch (< 9" Thickness)	Each	\$236.00	10	\$2,360.00
H.	Drill Rig Stand-by	Hour	\$225.00	2	\$450.00
I.	Per Diem/2-Man Crew (Drillers)	Each	\$84.00	0	\$0.00
J.	Field Professional, Time On-Site	Hour	\$74.00	0	\$0.00
K.	Project Engineer, Time On-Site, Coordination, etc.	Hour	\$87.00	0	\$0.00
L.	In-Place Permeability Testing	Each	\$371.00	0	\$0.00
M.	Grout bore holes	Foot	\$8.20	100	\$820.00
N.	CBR Sample Collection	Hour	\$74.00	0	\$0.00
O.	MOT/Field Support Vehicle	Hour	\$120.00	8	\$960.00
Laboratory Testing					
A.	Visual Classification - Engineer	Hour	\$87.00	0	\$0.00
B.	Moisture Content (ASTM D 2216)	Each	\$18.50	10	\$185.00
C.	Grain Size Analysis/Fines Content (ASTM C-136)	Each	\$120.00	10	\$1,200.00
D.	Materials Finer than No. 200 Sieve by Washing (ASTM C-117)	Each	\$55.00	0	\$0.00
E.	Liquid Limit, Plastic Limit and Plasticity Index of Soils (ASTM D 4318)	Each	\$110.00	3	\$330.00
F.	Standard/Modified Proctor Test (ASTM D-698 or ASTM D-1557)	Each	\$180.00	0	\$0.00
G.	California Bearing Ratio (CBR)	Each	\$371.00	3	\$1,113.00
				Total	\$10,078.00

**EXHIBIT A - CONSULTANT'S COMPENSATION PROPOSAL
TABLE C-7a, C-7b and C-7c
PARTICIPATION SCHEDULES**

TABLE C-7a DBE PARTICIPATION SCHEDULE

NAME OF SUBCONSULTANT	ADDRESS	PROPOSED SCOPE OF SERVICES	FEE	PROPOSED PARTICIPATION
American Infrastructure Development, Inc	37 North Orange Avenue, Suite 500. Orlando, Florida 32801	Pavement Design, Drainage, NPDES, Markings	\$35,044	12%
Barnes, Ferland and Associates, Inc.	1230 Hillcrest Street Suite 100, Orlando, Florida 32803	Surveying	\$42,040	14%
Nadic Engineering Services, Inc	601 N. Hart Blvd Orlando, FL 32818	Geotechnical	\$18,180	6%
TOTAL PROPOSED PARTICIPATION			\$95,264.00	33%

**EXHIBIT A - CONSULTANT'S COMPENSATION PROPOSAL
TABLE C-7a, C-7b and C-7c
PARTICIPATION SCHEDULES**

TABLE C-7b MWBE PARTICIPATION SCHEDULE

NAME OF SUBCONSULTANT	ADDRESS	MWBE CLASSIFICATION	PROPOSED SCOPE OF SERVICES	FEE	PROPOSED PARTICIPATION
Not Applicable.					
TOTAL PROPOSED PARTICIPATION				\$0.00	0

EXHIBIT A - CONSULTANT'S COMPENSATION PROPOSAL
TABLE C-7a, C-7b and C-7c
PARTICIPATION SCHEDULES

TABLE C-7c LDB PARTICIPATION SCHEDULE

NAME OF FIRM	ADDRESS	PROPOSED SCOPE OF SERVICES	FEE	PROPOSED PARTICIPATION
Not Applicable.				
TOTAL PROPOSED PARTICIPATION			\$0.00	0

EXHIBIT A - CONSULTANT'S COMPENSATION PROPOSAL
TABLE C-8
LIST OF ANTICIPATED DRAWINGS SHEETS

<u>DRAWING DESCRIPTION</u>	<u>NO. OF SHEETS</u>	<u>CONSULTANT</u>
Cover Sheet	1	C&S Engineers, Inc.
Sheet Index and General Notes	1	C&S Engineers, Inc.
Legend and Abbreviations	1	C&S Engineers, Inc.
Summary of Pay Items	1	C&S Engineers, Inc.
Survey Control Plan	1	C&S Engineers, Inc.
Overall Site Plan and Key map	1	C&S Engineers, Inc.
Existing Conditions	4	C&S Engineers, Inc.
Existing Conditions Schedules	1	C&S Engineers, Inc.
Demolition Plan	4	C&S Engineers, Inc.
Demolition Details	2	C&S Engineers, Inc.
Grading Plan	4	C&S Engineers, Inc.
Profiles	2	C&S Engineers, Inc.
Geometry Plan	4	C&S Engineers, Inc.
Geometry Control	1	C&S Engineers, Inc.
Typical Sections	2	American Infrastructure Development, Inc.
Grading Sections	2	C&S Engineers, Inc.
Soil Erosion and Sediment Control Plans	4	American Infrastructure Development, Inc.
Soil Erosion and Sediment Control Details	2	American Infrastructure Development, Inc.
Drainage Plans	4	American Infrastructure Development, Inc.
Drainage Structures and Details	2	American Infrastructure Development, Inc.
Marking Plans	4	American Infrastructure Development, Inc.
Marking Details	2	American Infrastructure Development, Inc.
Construction Safety and Phasing Plans	8	C&S Engineers, Inc.
Airspace Critical Locations Plan	1	C&S Engineers, Inc.
Construction Safety Phasing Details	2	C&S Engineers, Inc.
Airfield Lighting and Signage Demolition Plans	4	C&S Engineers, Inc.
Airfield Lighting and Signage Plan	4	C&S Engineers, Inc.
Airfield Lighting and Signage Details	4	C&S Engineers, Inc.
Electrical Vault Plans and Details	2	C&S Engineers, Inc.
TOTAL:	75	

EXHIBIT A - CONSULTANT'S COMPENSATION PROPOSAL
TABLE C-9
CONTRACT HOURLY RATES

All amounts invoiced by the Consultant as Reimbursable Fees shall be calculated on the basis of the actual number of hours of services rendered under this Agreement by each of the positions defined and by the new positions as identified below, multiplied by the corresponding Contract Hourly Rate, up to the Not to Exceed limit defined by the Agreement. Include information on positions held by both the design consultant and each subconsultant.

FIRM	POSITION	CONTRACT HOURLY RATE
C&S Engineers, Inc.		
C&S	Project Coordinator	\$81.00
Prime	Senior Designer	\$91.00
	Engineer	\$108.00
	Project Engineer	\$128.00
	Senior Project Engineer	\$135.00
	Senior Project Manager	\$207.00
	QC Reviewer	\$235.00
	Principal	\$347.00
American Infrastructure Development, Inc.		
AID	Principal	\$165.00
Subconsultant No. 01	QC Reviewer	\$96.00
	Sr. Project Manager	\$151.00
	Sr. Engineer	\$115.00
	Engineer	\$70.00
	Sr. CADD Designer	\$82.00
	CADD Technician	\$60.00
	Clerical	\$50.00
Echo UES		
Echo		
Subconsultant No. 02		
	NO SCOPE OF WORK	

EXHIBIT A - CONSULTANT'S COMPENSATION PROPOSAL
TABLE C-9
CONTRACT HOURLY RATES

Barnes, Ferland and Associates, Inc.		
BFA	Instrument Person	\$52.00
Subconsultant No. 03	Rod Person	\$55.00
	Senior CADD Designer	\$85.00
	Senior Project Manager	\$183.00
	Sr. Surveyor and Mapper	\$141.00
	SUE Crew Member	\$57.00
	SUE Crew Technician	\$64.00
	Survey Technician/ Utility Coordinator	\$76.00
Woolpert, Inc.		
Woolpert		
Subconsultant No. 04		
	NO SCOPE OF WORK / FEE UNTIL CONSTRUCTION PHASE	
Nadic Engineering Services, Inc.		
Nadic	Principal Engineer	\$172.00
Subconsultant No. 05	Senior Project Manager	\$169.00
	Senior Engineer/Geologist	\$159.00
	Project Engineer/Geologist	\$139.00
	Engineer/Geologist	\$87.00
	Senior CADD/GIS Support / Senior Engineering Technician	\$74.00
	Engineering Technician II	\$59.00
	Clerical	\$50.00



GREATER ORLANDO AVIATION AUTHORITY

Orlando International Airport
5850-B Cargo Road
Orlando, Florida 32827-4399

MEMORANDUM

To: Members of the Construction Committee

From: Edelis Molina, Sr. Small Business Administrator

Date: March 29, 2022

Re: Request for Recommendation of Approval of an Addendum to the Professional Services Agreement with C&S Engineers, Inc. for Design Phase Services for BP-00049, ORL Taxiways A, B and E4 Rehabilitation Orlando Executive Airport

We have reviewed the qualifications of the subject contract's DBE specifications and determined that, C&S Engineers, Inc. proposes 33% DBE participation on this Addendum.

Our analysis indicates that C&S Engineers, Inc. is eligible for award of the subject Addendum.

DBE UTILIZATION FORM FOR FEDERALLY FUNDED PROJECTS
PLEASE COMPLETE THIS FORM

This form should be used to report Construction and Engineering /Professional Services activities.

Name of Airport: Orlando International Airport

Telephone No.: (407) 825-7130

Address: One Jeff Fuqua Boulevard, Orlando, FL 32827

Project Name & Number: Request for Recommendation of Approval of an Addendum to the Professional Services Agreement with C&S Engineers, Inc. for Design Phase Services for BP-00049, ORL Taxiways A, B and E4 Rehabilitation Orlando Executive Airport

1. Construction Information:

Addendum Amount: _____

2. DBE Goal by Group Representation:

Asian Pacific American	_____	Actual Result	_____
Asian Subcontinent American	_____	Actual Result	_____
Black American	_____	Actual Result	_____
Caucasian Female American	_____	Actual Result	_____
Hispanic American	_____	Actual Result	_____
Native American	_____	Actual Result	_____
Other	_____	Actual Result	_____
Total DBE Participation	-	Actual Result	_____

3.a. Prime Contractor Information:

Name: _____
 Address: _____
 City, State, Zip: _____
 Telephone: _____

3.b. Name and Address of DBE Subcontractor

Name: _____
 Address: _____
 City, State, Zip: _____
 Telephone: _____

3.c. *Identity:

Work Item(s): _____
 Amount of Subcontract: _____
 Percent of Prime Contract: _____

4. Engineering/Professional Services Information:

Addendum Amount: 289,997.00

5. DBE Goal by Group Representation:

Asian Pacific American	_____	Actual Result	_____
Asian Subcontinent American	<u>35,044.00</u>	Actual Result	<u>12%</u>
Black American	<u>60,220.00</u>	Actual Result	<u>21%</u>
Caucasian Female American	_____	Actual Result	_____
Hispanic American	_____	Actual Result	_____
Native American	_____	Actual Result	_____
Other	_____	Actual Result	_____
Total DBE Participation	<u>95,264.00</u>	Actual Result	<u>33%</u>

6.b. Engineering / Professional Services Firm Information:

Name: C&S Engineers, Inc.
 Address: 605 East Robinson Street, Suite 210
 City, State, Zip: Orlando, FL 32801
 Telephone: (407) 422-1118

6.b. Name and Address of DBE Subconsultant

Name: Please see attached
 Address: _____
 City, State, Zip: _____
 Telephone: _____

6.c. *Identity:

Work Item(s): _____
 Percent of Prime Contract: _____

I certify that the information included on this form and its attachment is correct
 Signature: Edelis Molina Date: 03/29/22
 for George I. Morning, Director of Small Business Development Department

* In Items 3.c. and 6.c. above specify the identity of DBE Subcontractors and E/PS Firms (e.g. Black American, Hispanic American, Asian Subcontinent American, Asian Pacific American, Caucasian Female American, Native American & Other)

DBE Subcontractor/Subconsultant Certification

Project Name & Number: Request for Recommendation of Approval of an Addendum to the Professional Services Agreement with C&S Engineers, Inc. for Design Phase Services for BP-00049, ORL Taxiways A, B and E4 Rehabilitation Orlando Executive Airport

Prime Firm: C&S Engineers, Inc.

Addendum Amount: \$289,997.00

Company Name American Infrastructure Development, Inc.
Address 3810 Northdale Mabry Hwy., Suite 170
City, State, Zip Tampa, FL 33624
Phone (813) 374-2200
Identity Asian Subcontinent American
Work Item Pavement Design, Drainage, NPDES, Markings
Amount of Subcontract 35,044.00
Percentage 12.1%

Barnes, Ferland and Associates, Inc.
1230 Hillcrest Street
Orlando, FL 32803
407-896-8608
Black American
Surveying
42,040.00
14.5%

Company Name Nadic Engineering Services, Inc.
Address 601 N. Hart Blvd.
City, State, Zip Orlando, FL 32818
Phone 407-521-4771
Identity Black American
Work Item Geotechnical
Amount of Subcontract 18,180.00
Percentage 6.3%

Company Name _____
Address _____
City, State, Zip _____
Phone _____
Identity _____
Work Item _____
Amount of Subcontract _____
Percentage _____

Company Name _____
Address _____
City, State, Zip _____
Phone _____
Identity _____
Work Item _____
Amount of Subcontract _____
Percentage _____

\$95,264.00 33%
289,997.00



GREATER ORLANDO AVIATION AUTHORITY

Orlando International Airport
One Jeff Fuqua Boulevard
Orlando, Florida 32827-4392

MEMORANDUM

TO: Members of the Aviation Authority

FROM: Davin D. Ruohomaki, Chairman, Construction Committee

DATE: July 20, 2022

ITEM DESCRIPTION

Recommendation of the Construction Committee to Approve an Addendum to the Professional Services Agreement with C&S Engineers, Inc. for Design Phase Architect/Engineer (A/E) Services for Project Bid Package (BP) No. 00049, ORL Taxiways A, B and E4 Rehabilitation, at the Orlando Executive Airport (ORL)

BACKGROUND

BP No. 00049 consists of the rehabilitation of Taxiways A, B and B1; demolish of portions of Taxiways E4 and E5; and construct new Taxiway E4 between Runway 13-31 and its parallel Taxiway E, at the Orlando Executive Airport. The construction work will include new asphalt pavement, mill and overlay existing asphalt pavement, and new and associated improvements for taxiway markings, lighting and signage.

ISSUES

A fee has been negotiated with C&S Engineers, Inc. for a total amount of \$289,997, to provide Design Phase A/E Services for BP No. 00049, ORL Taxiways A, B and E4 Rehabilitation, at the Orlando Executive Airport. The scope of services includes, but is not limited to, project surveys, geotechnical/site investigations, utility verification, evaluation of potential impacts to aircraft flow during construction and runway closure, project design, preparation of bid documents (i.e., 60%, 90% and 100%), cost estimates, permitting documents, engineer's report, construction safety and phasing plan, project schedule, and as-built research.

The Aviation Authority has reviewed the proposal and determined that C&S Engineers, Inc. proposes to achieve 33% DBE participation for these services.

On March 29, 2022, the Construction Committee recommended approval of an Addendum to the Professional Services Agreement with C&S Engineers, Inc. for Design Phase A/E Services for BP No. 00049, ORL Taxiways A, B and E4 Rehabilitation, at the Orlando Executive Airport, as outlined in the memorandum.

On May 16, 2022, the Orlando City Council authorized the pre-acceptance of the grant offered by the Federal Aviation Administration (FAA) in the amount of \$260,966 for BP No. 00049 on behalf of the Aviation Authority. The pre-acceptance of this FAA grant included the associated contracts. By pre-accepting the grant with pre-authorization for the Mayor and City Attorney to sign the grant, the grant can be executed immediately upon receipt from the FAA within the time frame required for acceptance.

ALTERNATIVES

None

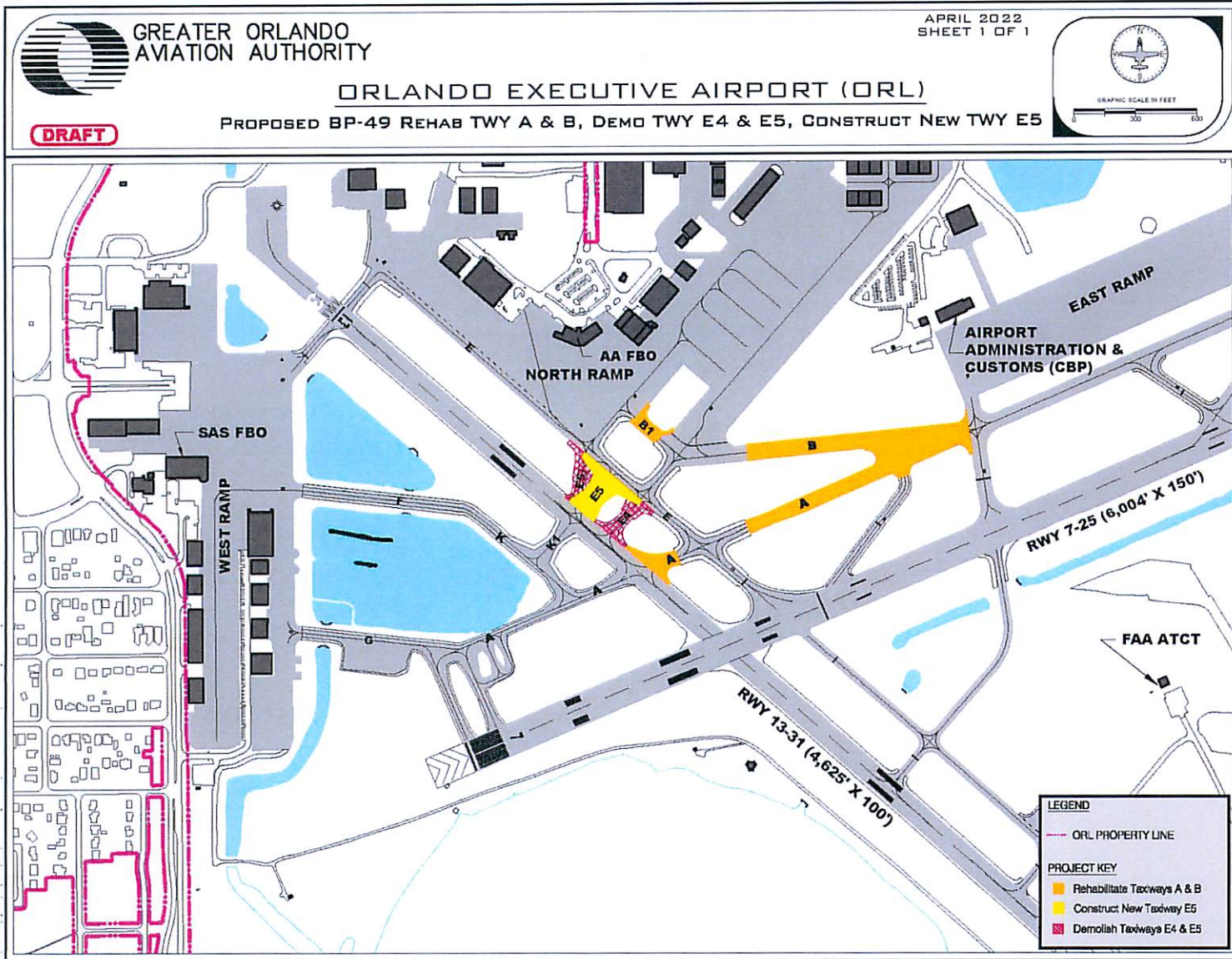
FISCAL IMPACT

The fiscal impact is \$289,997. Funding is from FAA and Florida Department of Transportation (FDOT) Grants to the extent eligible and previously-approved ORL Revenue Funds. A FDOT grant in the amount of \$24,000 is being concurrently requested for approval at this meeting.

RECOMMENDED ACTION

It is respectfully requested that the Aviation Authority Board resolve to accept the recommendation of the Construction Committee and approve an Addendum to the Professional Services Agreement with C&S Engineers, Inc. for Design Phase A/E Services for BP No. 00049, ORL Taxiways A, B and E4 Rehabilitation, at the Orlando Executive Airport, for a total amount of \$289,997, which includes a lump sum fee amount of \$229,477, a not-to-exceed fee amount of \$50,142, and a not-to-exceed reimbursable expenses amount of \$10,378, with funding from FAA and FDOT Grants to the extent eligible and previously-approved ORL Revenue Funds (Orlando City Council concurred to accept the grant and associated contracts on May 16, 2022); and, authorize an Aviation Authority Officer or the Chief Executive Officer to execute the necessary documents following satisfactory review by legal counsel.

BP-00049, ORL Taxiways A, B and E4 Rehabilitation



July 20, 2022

CITY OF ORLANDO COUNCIL AGENDA ITEM

Items Types:

Other

District: ALL**Contract ID:****Exhibits:** Yes**Grant Received by City?:** Yes**For Meeting of:**

May 16, 2022

From:**Document Number:****On File (City Clerk) :** Yes**Draft Only:** No**Subject:**

Pre-Acceptance of Greater Orlando Aviation Authority (GOAA) Grant for Orlando Executive Airport Taxiways Rehabilitation

Summary:

The Greater Orlando Aviation Authority (GOAA) has submitted a grant application to the Federal Aviation Administration (FAA) for funding in the amount of \$260,966.00 for Project BP-49, Taxiways A, B and E4 Rehabilitation (Design). The total cost of the project is \$289,962.00, with \$5,799.00 from GOAA and \$23,197.00 from the state.

The City is required to be the grant applicant and GOAA has applied for the grant on behalf of the City. Due to the required time limits for grant award and acceptance, GOAA has requested that City Council accept the grant prior to award. This will insure that GOAA does not lose award funding due to the timing of acceptance. A copy of the grant application is attached.

Fiscal & Efficiency Data:

No fiscal impact.

Recommended Action:

Accepting and Approving the grant and associated contracts, and authorizing the Mayor and City Clerk to execute same, substantially in the form and containing the terms and conditions consistent with customary Federal Aviation Administration (FAA) grants, subject to review by the City Attorney's Office.

Agenda Item attachment(s) on file in the City Clerks Office.

Note: All agenda items must be in the City Clerk's office by Noon Friday, six(6) business days prior to the regular Monday City Council meeting.

Contact: Wesley Powell, (407) 246-3478; wesley.powell@cityoforlando.net

Approved By:**Department**

Budget Outside Routing Approval

City Clerk

Date and Time

5/4/2022 2:29 PM

5/4/2022 6:44 PM

ATTACHMENTS:

Name:	Description:	Type:
D Grant_Applic_OrlExecAirport_Taxiways_A_B__E4_Rehab.pdf	GOAA Grant Applic. Orl Exec Airport Taxiways Rehab	Backup Material